

Recombinant Synaptophysin (Neuroendocrine Marker) Antibody

Mouse Monoclonal Antibody [Clone rSYP/6856]

Catalog No	Format	Size
6855-MSM6-P0	Purified Ab with BSA and Azide at 200ug/ml	20 ug
6855-MSM6-P1	Purified Ab with BSA and Azide at 200ug/ml	100 ug
6855-MSM6-P1ABX	Purified Ab WITHOUT BSA and Azide at 1.0mg/ml	100 ug

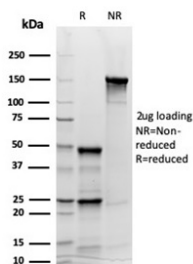
Applications	Tested Dillution	Note
Immunohistochemistry (IHC)	1-2ug/ml	30 min at RT. Staining of formalin-fixed tissues requires heating tissue sections in 10mM Tris with 1mM EDTA, pH 9.0, for 45 min at 95°C followed by cooling at RT for 20 minutes
Western Blot (WB)	2-4ug/ml	

Product Details

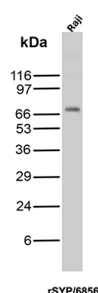
Clone	rSYP/6856
Gene Name	SYP
Immunogen	Recombinant fragment (around aa 224-313) of human Synaptophysin (SYP) protein (exact sequence is proprietary)
Host	Mouse
Clonality	Monoclonal
Isotype / Light Chain	IgG1 / Kappa
Mol. Weight of Antigen	38kDa
Cellular Localization	Cell junction, Cytoplasmic vesicle, Secretory vesicle, Synapse, Synaptic vesicle membrane, Synaptosome
Species Reactivity	Human
Positive Control	Cerebellum or Pheochromocytoma., HeLa or Y79 cells. Human pancreas, HePG2, Raji.

**Optimal dilution for a specific application should be determined.*

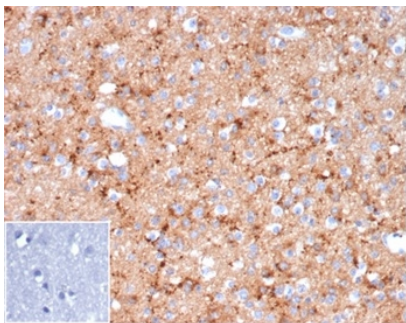
Product Images for Recombinant Synaptophysin (Neuroendocrine Marker) Antibody



SDS-PAGE Analysis of Purified Synaptophysin Recombinant Mouse Monoclonal Antibody (rSYP/6856). Confirmation of Purity and Integrity of Antibody.



Western Blot Analysis of Raji lysate using Synaptophysin Recombinant Mouse Monoclonal Antibody (rSYP/6856).



Formalin-fixed, paraffin-embedded human brain stained with rSYP/6856 at 2ug/ml. HIER: Tris/EDTA, pH9.0, 45min. 2°C: HRP-polymer, 30min. DAB, 5min. Inset: PBS instead of primary. Secondary antibody negative control.

Specificity & Comments

This recombinant mouse monoclonal antibody recognizes a protein of 38kDa that is identified as synaptophysin. It is an N-glycosylated integral membrane protein found in neurons and endocrine cells. Synaptophysin contains four transmembrane domains and may function as a gap junction-like channel. This antibody identifies normal neuroendocrine cells and neuroendocrine neoplasms. Diffuse, finely granular, cytoplasmic staining is observed, which probably correlates with the distribution of the antigen within neurosecretory vesicles. Synaptophysin is an independent, broad-range marker of neural and neuroendocrine differentiation.

Supplied As

200ug/ml of Ab purified from Bioreactor Concentrate by Protein A/G. Prepared in 10mM PBS with 0.05% BSA & 0.05% azide. Also available WITHOUT BSA & azide at 1.0mg/ml.

Storage and Stability

Antibody with azide - store at 2 to 8 °C. Antibody without azide - store at -20 to -80 °C. Antibody is stable for 24 months. Non-hazardous. No MSDS required.

Research Areas

Neural Stem Cells, Neuroscience

Limitations and Warranty

This antibody is available for research use only and is not approved for use in diagnosis. There are no warranties, expressed or implied, which extend beyond this description. Company is not liable for any personal injury or economic loss resulting from this product.