

CD147 / BSG / EMMPRIN / Neurothelin Antibody

Mouse Monoclonal Antibody [Clone BSG/963]

Catalog No	Format	Size
682-MSM3-P0	Purified Ab with BSA and Azide at 200ug/ml	20 ug
682-MSM3-P1	Purified Ab with BSA and Azide at 200ug/ml	100 ug
682-MSM3-P1ABX	Purified Ab WITHOUT BSA and Azide at 1.0mg/ml	100 ug

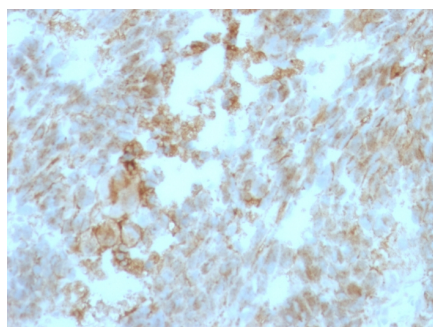
Applications	Tested Dillution	Note
Immunohistochemistry (IHC)	1-2ug/ml	30 min at RT. Staining of formalin-fixed tissues requires heating tissue sections in 10mM Tris with 1mM EDTA, pH 9.0, for 45 min at 95°C followed by cooling at RT for 20 minutes

Product Details

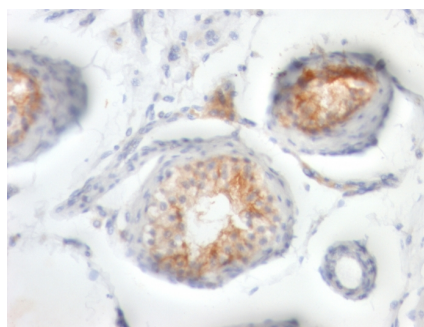
Clone	BSG/963
Gene Name	BSG
Immunogen	Recombinant human BSG protein
Host	Mouse
Clonality	Monoclonal
Isotype / Light Chain	IgG1 / Kappa
Mol. Weight of Antigen	35kDa (non-reduced); 40kDa (reduced)
Cellular Localization	Basolateral cell membrane, Cell membrane, Cell projection, Cilium, Endoplasmic reticulum membrane, Endosome, Melanosome, Photoreceptor inner segment, Photoreceptor outer segment
Species Reactivity	Human
Positive Control	Colon or Testicular carcinoma., HSB2 cells. Renal Cell

**Optimal dilution for a specific application should be determined.*

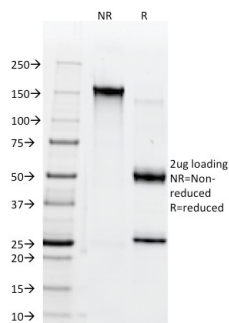
Product Images for CD147 / BSG / EMMPRIN / Neurothelin Antibody



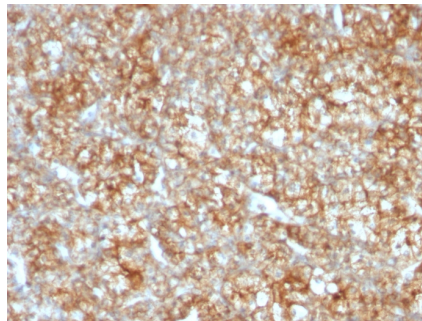
Formalin-fixed, paraffin-embedded human Colon Carcinoma stained with CD147 Mouse Monoclonal Antibody (BSG/963).



Formalin-fixed, paraffin-embedded human Testicular Carcinoma stained with CD147 Mouse Monoclonal Antibody (BSG/963).



SDS-PAGE Analysis of Purified CD147 Mouse Monoclonal Antibody (BSG/963). Confirmation of Integrity and Purity of Antibody.



Formalin-fixed, paraffin-embedded human Renal Cell Carcinoma stained with CD147 Mouse Monoclonal Antibody (BSG/963).

Specificity & Comments

This MAb recognizes extracellular epitope of human CD147. It is expressed more intensely on thymocytes than on mature peripheral blood T cells. CD147 is important in spermatogenesis, embryo implantation, neural network formation, and tumor progression. It stimulates the production of interstitial collagenase, gelatinase A, stromelysin-1 and various metalloproteinases (MMPs) by fibroblasts. These enzymes are important factors in cancer invasion and metastasis.

Supplied As

200ug/ml of Ab Purified from Bioreactor Concentrate by Protein A/G. Prepared in 10mM PBS with 0.05% BSA & 0.05% azide. Also available WITHOUT BSA & azide at 1.0mg/ml.

Storage and Stability

Antibody with azide - store at 2 to 8°C. Antibody without azide - store at -20 to -80°C. Antibody is stable for 24 months. Non-hazardous. No MSDS required.

Research Areas

Cardiovascular, Infectious Disease

Limitations and Warranty

This antibody is available for research use only and is not approved for use in diagnosis. There are no warranties, expressed or implied, which extend beyond this description. Company is not liable for any personal injury or economic loss resulting from this product.