

CD147 / BSG / EMMPRIN / Neurothelin Antibody

Mouse Monoclonal Antibody [Clone 8D6]

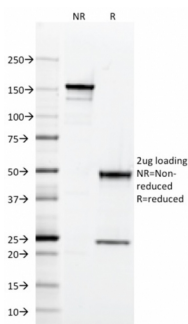
| Catalog No | Format | Size |
|----------------|---|--------|
| 682-MSM1-P0 | Purified Ab with BSA and Azide at 200ug/ml | 20 ug |
| 682-MSM1-P1 | Purified Ab with BSA and Azide at 200ug/ml | 100 ug |
| 682-MSM1-P1ABX | Purified Ab WITHOUT BSA and Azide at 1.0mg/ml | 100 ug |

| Applications | Tested Dillution | Note |
|----------------------------|---------------------|---|
| Flow Cytometry (Flow) | 1-2ug/million cells | |
| Immunofluorescence (IF) | 1-3ug/ml | |
| Immunohistochemistry (IHC) | 1-2ug/ml | 30 min at RT. Staining of formalin-fixed tissues requires heating tissue sections in 10mM Tris with 1mM EDTA, pH 9.0, for 45 min at 95°C followed by cooling at RT for 20 minutes |
| Western Blot (WB) | 2-4ug/ml | |

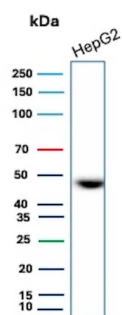
| Product Details | |
|-------------------------------|---|
| Clone | 8D6 |
| Gene Name | BSG |
| Immunogen | Human T cell line Molt 13 |
| Host | Mouse |
| Clonality | Monoclonal |
| Isotype / Light Chain | IgG1 / Kappa |
| Mol. Weight of Antigen | 35kDa (non-reduced); 40kDa (reduced) |
| Cellular Localization | Basolateral cell membrane, Cell membrane, Cell projection, Cilium, Endoplasmic reticulum membrane, Endosome, Melanosome, Photoreceptor inner segment, Photoreceptor outer segment |
| Species Reactivity | Human |
| Positive Control | HepG2, HeLa. Human renal cell carcinoma, ovarian carcinoma or melanoma. |

*Optimal dilution for a specific application should be determined.

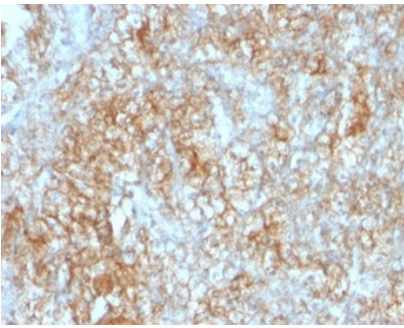
Product Images for CD147 / BSG / EMMPRIN / Neurothelin Antibody



SDS-PAGE Analysis of Purified CD147 Mouse Monoclonal Antibody (8D6). Confirmation of Integrity and Purity of Antibody.



Western Blot Analysis of HepG2 lysate using CD147 Mouse Monoclonal Antibody (8D6).



Formalin-fixed, paraffin-embedded human renal cell carcinoma stained with CD147 Mouse Monoclonal Antibody (8D6).

Specificity & Comments

This MAb recognizes extracellular epitope 2 within the N-terminal Ig domain of human CD147. It is expressed more intensely on thymocytes than on mature peripheral blood T cells. CD147 is important in spermatogenesis, embryo implantation, neural network formation, and tumor progression. It stimulates the production of interstitial collagenase, gelatinase A, stromelysin-1 and various metalloproteinases (MMPs) by fibroblasts. These enzymes are important factors in cancer invasion and metastasis.

Limitations and Warranty

This antibody is available for research use only and is not approved for use in diagnosis. There are no warranties, expressed or implied, which extend beyond this description. Company is not liable for any personal injury or economic loss resulting from this product.

Supplied As

200ug/ml of Ab purified from Bioreactor Concentrate by Protein A/G. Prepared in 10mM PBS with 0.05% BSA & 0.05% azide. Also available WITHOUT BSA & azide at 1.0mg/ml.

Storage and Stability

Antibody with azide - store at 2 to 8 °C. Antibody without azide - store at -20 to -80 °C. Antibody is stable for 24 months. Non-hazardous. No MSDS required.

Research Areas

Cardiovascular, Infectious Disease
