

Sulfotransferase family 1E, estrogen-preferring, member 1 Antibody

Mouse Monoclonal Antibody [Clone CPTC-SULT1E1-1]

Catalog No	Format	Size
6783-MSM1-P0	Purified Ab with BSA and Azide at 200ug/ml	20 ug
6783-MSM1-P1	Purified Ab with BSA and Azide at 200ug/ml	100 ug
6783-MSM1-P1ABX	Purified Ab WITHOUT BSA and Azide at 1.0mg/ml	100 ug

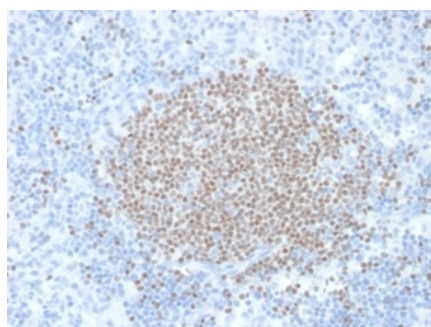
Applications	Tested Dillution	Note
Immunohistochemistry (IHC)	1-2ug/ml	30 min at RT. Staining of formalin-fixed tissues requires heating tissue sections in 10mM Tris with 1mM EDTA, pH 9.0, for 45 min at 95°C followed by cooling at RT for 20 minutes
Western Blot (WB)	2-4ug/ml	

Product Details

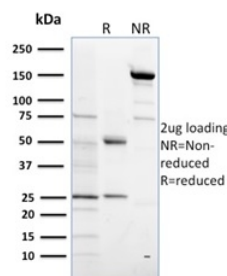
Clone	CPTC-SULT1E1-1
Gene Name	SULT1E1
Immunogen	Recombinant full-length human SULT1E1 protein
Host	Mouse
Clonality	Monoclonal
Isotype / Light Chain	IgG2b
Mol. Weight of Antigen	35kDa
Cellular Localization	Cytoplasm, Cytosol
Species Reactivity	Human
Positive Control	HEPG2 cells. Human liver, intestine or kidney.

*Optimal dilution for a specific application should be determined.

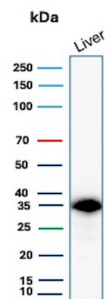
Product Images for Sulfotransferase family 1E, estrogen-preferring, member 1 Antibody



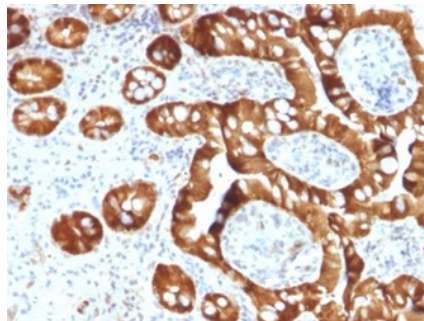
Formalin-fixed, paraffin-embedded human lymph node stained with SULT1E1 Mouse Monoclonal Antibody (CPTC-SULT1E1-1).



SDS-PAGE Analysis of Purified SULT1E1 Mouse Monoclonal Antibody (CPTC-SULT1E1-1). Confirmation of Purity and Integrity of Antibody.



Western Blot Analysis of human liver lysate using SULT1E1 Mouse Monoclonal Antibody (CPTC-SULT1E1-1).



Formalin-fixed, paraffin-embedded human small intestine stained with SULT1E1 Mouse Monoclonal Antibody (CPTC-SULT1E1-1).

Specificity & Comments

The soluble sulfotransferases contribute to the elimination of xenobiotics, the activation of procarcinogens and the regulation of hormones by catalyzing the sulfate conjugation of these substances. SULT1E1, also known as STE, is a 294 amino acid member of the SULT1 family. Localized to the cytoplasm and expressed in intestine, liver and kidney, SULT1E1 exists as a homodimer that is thought to control estrogen receptor (ER) levels by sulfurylating free estradiol. Defects in the gene encoding SULT1E1 are associated with an increased risk for endometrial cancer, suggesting a role for SULT1E1 in tumorigenesis.

Supplied As

200ug/ml of Ab purified from Bioreactor Concentrate by Protein A/G. Prepared in 10mM PBS with 0.05% BSA & 0.05% azide. Also available WITHOUT BSA & azide at 1.0mg/ml.

Storage and Stability

Antibody with azide - store at 2 to 8 °C. Antibody without azide - store at -20 to -80 °C. Antibody is stable for 24 months. Non-hazardous. No MSDS required.

Research Areas

Cardiovascular

Limitations and Warranty

This antibody is available for research use only and is not approved for use in diagnosis. There are no warranties, expressed or implied, which extend beyond this description. Company is not liable for any personal injury or economic loss resulting from this product.