

## STAT2 Antibody

Mouse Monoclonal Antibody [Clone STAT2/2650]

Catalog No	Format	Size
6773-MSM2-P0	Purified Ab with BSA and Azide at 200ug/ml	20 ug
6773-MSM2-P1	Purified Ab with BSA and Azide at 200ug/ml	100 ug
6773-MSM2-P1ABX	Purified Ab WITHOUT BSA and Azide at 1.0mg/ml	100 ug

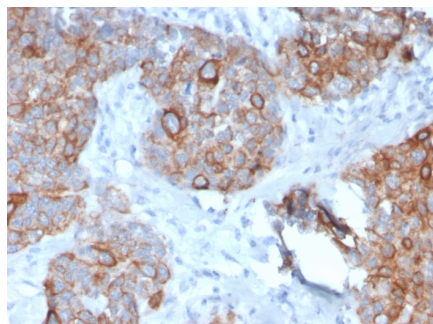
Applications	Tested Dillution	Note
Immunohistochemistry (IHC)	1-2ug/ml	30 min at RT. Staining of formalin-fixed tissues requires heating tissue sections in 10mM Tris with 1mM EDTA, pH 9.0, for 45 min at 95°C followed by cooling at RT for 20 minutes

### Product Details

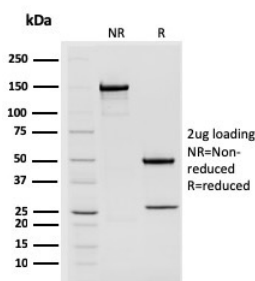
<b>Clone</b>	STAT2/2650
<b>Gene Name</b>	STAT2
<b>Immunogen</b>	Recombinant full-length human STAT2 protein
<b>Host</b>	Mouse
<b>Clonality</b>	Monoclonal
<b>Isotype / Light Chain</b>	IgG1 / Kappa
<b>Mol. Weight of Antigen</b>	113kDa
<b>Cellular Localization</b>	Cytoplasm, Nucleus
<b>Species Reactivity</b>	Human
<b>Positive Control</b>	Ramos and Jurkat cell lysates. HeLa cell extract. Human lung carcinoma tissue.

\*Optimal dilution for a specific application should be determined.

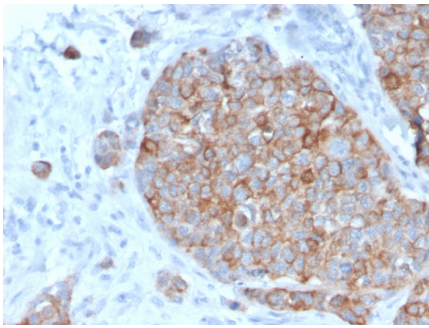
### Product Images for STAT2 Antibody



Formalin-fixed, paraffin-embedded human Prostate Carcinoma stained with STAT2 Mouse Monoclonal Antibody (STAT2/2650).



SDS-PAGE Analysis of Purified STAT2 Mouse Monoclonal Antibody (STAT2/2650). Confirmation of Purity and Integrity of Antibody.



Formalin-fixed, paraffin-embedded human Prostate Carcinoma stained with STAT2 Mouse Monoclonal Antibody (STAT2/2650).

---

### Specificity & Comments

Membrane receptor signaling by various ligands, including interferons and growth hormones such as EGF, induces activation of JAK kinases which then leads to tyrosine phosphorylation of the various Stat transcription factors. Stat1 and Stat2 are induced by IFN- is activated by EGF, but not by IL-6. Highest expression of Stat4 is seen in testis and myeloid cells. IL-12 has been identified as an activator of Stat4. Stat5 has been shown to be activated by prolactin and by IL-3. Stat6 is involved in IL-4 activated signaling pathways.

---

### Limitations and Warranty

This antibody is available for research use only and is not approved for use in diagnosis. There are no warranties, expressed or implied, which extend beyond this description. Company is not liable for any personal injury or economic loss resulting from this product.

---

### Supplied As

200ug/ml of Ab Purified from Bioreactor Concentrate by Protein A/G. Prepared in 10mM PBS with 0.05% BSA & 0.05% azide. Also available WITHOUT BSA & azide at 1.0mg/ml.

---

### Storage and Stability

Antibody with azide - store at 2 to 8°C. Antibody without azide - store at -20 to -80°C. Antibody is stable for 24 months. Non-hazardous. No MSDS required.

---

### Research Areas

Cardiovascular, Cytokine Signaling, Immunology, Infectious Disease

---