

Recombinant Spectrin beta III (SPTBN2) Antibody

Rabbit Monoclonal Antibody [Clone SPTBN2/3142R]

Catalog No	Format	Size
6712-RBM9-P0	Purified Ab with BSA and Azide at 200ug/ml	20 ug
6712-RBM9-P1	Purified Ab with BSA and Azide at 200ug/ml	100 ug
6712-RBM9-P1ABX	Purified Ab WITHOUT BSA and Azide at 1.0mg/ml	100 ug

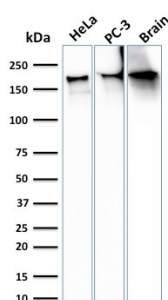
Applications	Tested Dillution	Note
Flow Cytometry (Flow)	1-2ug/million cells	
Immunofluorescence (IF)	1-3ug/ml	
Immunohistochemistry (IHC)	1-2ug/ml	30 min at RT. Staining of formalin-fixed tissues requires heating tissue sections in 10mM Tris with 1mM EDTA, pH 9.0, for 45 min at 95°C followed by cooling at RT for 20 minutes
Western Blot (WB)	2-4ug/ml	

Product Details

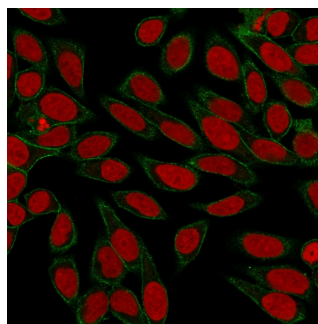
Clone	SPTBN2/3142R
Gene Name	SPTBN2
Immunogen	Recombinant fragment (around aa356-475) of human SPTBN2 protein (exact sequence is proprietary)
Host	Rabbit
Clonality	Monoclonal
Isotype / Light Chain	IgG / Kappa
Mol. Weight of Antigen	246kDa
Cellular Localization	Cell cortex, Cytoplasm, Cytoskeleton
Species Reactivity	Human
Positive Control	HeLa, PANC-1, pancreas or liver., PC-3 cells. Brain, Human Kidney, Human Testis

*Optimal dilution for a specific application should be determined.

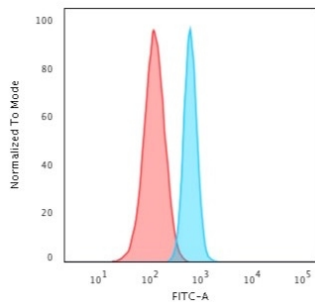
Product Images for Recombinant Spectrin beta III (SPTBN2) Antibody



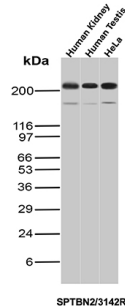
Western Blot Analysis of HeLa, PC-3 cells and Brain tissue lysate using Spectrin beta III Recombinant Rabbit Monoclonal (SPTBN2/3142R).



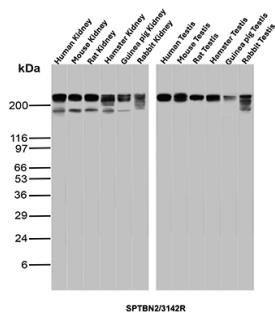
Immunofluorescence Analysis of HeLa cells labeling Spectrin Beta III with Spectrin beta III Recombinant Rabbit Monoclonal (SPTBN2/3142R) followed by Goat anti-Mouse IgG-CF488 (Green). Nuclear counterstain is Reddot (Red)



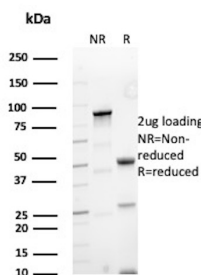
Flow Cytometric Analysis of HeLa cells using Spectrin beta III Recombinant Rabbit Monoclonal (SPTBN2/3142R) followed by Goat anti-rabbit IgG-CF488 (Blue); Isotype Control (Red).



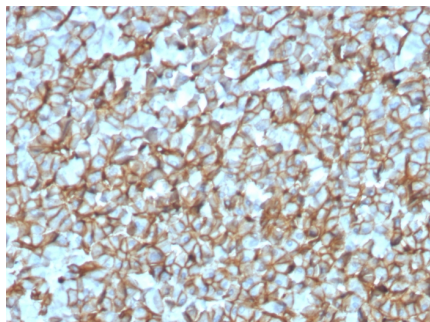
Western Blot Analysis of Human Kidney, Human Testis and HeLa lysates using Spectrin Beta 3 Recombinant Rabbit Monoclonal Antibody (SPTBN2/3142R).



Western Blot Analysis of Kidney and Testis tissue lysates of different species using Spectrin Beta 3 Recombinant Rabbit Monoclonal Antibody (SPTBN2/3142R).



SDS-PAGE Analysis of Purified Spectrin beta chain, non-erythrocytic 2 Rabbit Monoclonal Antibody (SPTBN2/3142R). Confirmation of Purity and Integrity of Antibody.



Formalin-fixed, paraffin-embedded human Pancreas stained with Spectrin beta III Recombinant Rabbit Monoclonal (SPTBN2/3142R).

Specificity & Comments

Spectrin is an actin binding protein that is a major component of the plasma membrane skeleton. Spectrins function as membrane organizers and stabilizers by forming dimers, tetramers and higher polymers. Vertebrate spectrins have two alpha-subunits (alpha-I/alpha-II) four beta-subunits (beta-I-beta-IV) and a beta-H subunit creating diversity and specialization of function. Spectrin III is highly expressed in brain, kidney, pancreas and liver, and at lower levels in lung and placenta. Spectrin beta 3 is primarily expressed in nervous tissues with highest expression levels in the cerebellum, where it is found in Purkinje cell soma and dendrites.

Supplied As

200ug/ml of Ab Purified from Bioreactor Concentrate by Protein A/G. Prepared in 10mM PBS with 0.05% BSA & 0.05% azide. Also available WITHOUT BSA & azide at 1.0mg/ml.

Storage and Stability

Antibody with azide - store at 2 to 8°C. Antibody without azide - store at -20 to -80°C. Antibody is stable for 24 months. Non-hazardous. No MSDS required.

Research Areas

Developmental Biology, Immunology, Signal Transduction

Limitations and Warranty

This antibody is available for research use only and is not approved for use in diagnosis. There are no warranties, expressed or implied, which extend beyond this description. Company is not liable for any personal injury or economic loss resulting from this product.