

CD43 (T-Cell Marker) Antibody

Rabbit Polyclonal Antibody [Clone N/A]

Catalog No	Format	Size
6693-RBP7-P0	Purified Ab with BSA and Azide at 200ug/ml	20 ug
6693-RBP7-P1	Purified Ab with BSA and Azide at 200ug/ml	100 ug
6693-RBP7-P1ABX	Purified Ab WITHOUT BSA and Azide at 1.0mg/ml	100 ug

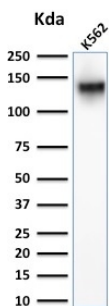
Applications	Tested Dillution	Note
Flow Cytometry (Flow)	1-2ug/million cells	
Immunofluorescence (IF)	1-3ug/ml	
Immunohistochemistry (IHC)	1-2ug/ml	30 min at RT. Staining of formalin-fixed tissues requires heating tissue sections in 10mM Tris with 1mM EDTA, pH 9.0, for 45 min at 95°C followed by cooling at RT for 20 minutes
Western Blot (WB)	2-4ug/ml	

Product Details

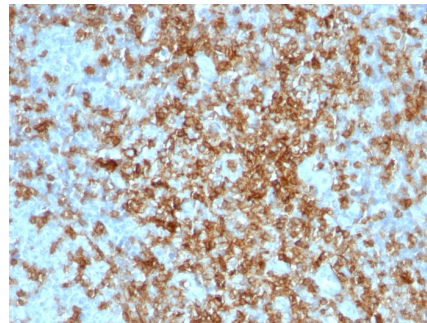
Clone	N/A
Gene Name	SPN
Immunogen	Recombinant full-length human SPN protein
Host	Rabbit
Clonality	Polyclonal
Isotype / Light Chain	IgG / Kappa
Mol. Weight of Antigen	115 95 or 135kDa
Cellular Localization	Cell projection, Membrane, Microvillus, Nucleus, PML body, Uropodium
Species Reactivity	Human
Positive Control	K562 cells. Paracortex in a tonsil or a reactive lymph node

*Optimal dilution for a specific application should be determined.

Product Images for CD43 (T-Cell Marker) Antibody



Western Blot Analysis of K562 cell lysate using CD43 Rabbit Polyclonal Antibody.



Formalin-fixed, paraffin-embedded human Tonsil stained with CD43 Rabbit Polyclonal Antibody.

Specificity & Comments

It recognizes a cell surface glycoprotein of 95/115/135kDa (depending upon the extent of glycosylation), identified as CD43. 70-90% of T-cell lymphomas and from 22-37% of B-cell lymphomas express CD43. No reactivity has been observed with reactive B-cells. So a B-lineage population that co-expresses CD43 is highly likely to be a malignant lymphoma, especially a low-grade lymphoma, rather than a reactive B-cell population. When CD43 antibody is used in combination with anti-CD20, effective immunophenotyping of the lymphomas in formalin-fixed tissues can be obtained. Co-staining of a lymphoid infiltrate with anti-CD20 and anti-CD43 argues against a reactive process and favors a diagnosis of lymphoma.

Limitations and Warranty

This antibody is available for research use only and is not approved for use in diagnosis. There are no warranties, expressed or implied, which extend beyond this description. Company is not liable for any personal injury or economic loss resulting from this product.

Supplied As

200ug/ml of Ab purified by Protein A. Prepared in 10mM PBS with 0.05% BSA & 0.05% azide. Also available WITHOUT BSA & azide at 1.0mg/ml.

Storage and Stability

Antibody with azide - store at 2 to 8°C. Antibody without azide - store at -20 to -80°C. Antibody is stable for 24 months. Non-hazardous. No MSDS required.

Research Areas

B Cell Markers, Cardiovascular, Hematopoietic Stem Cells
