

## PU.1 (SPI-1) (B-Cell Marker) Antibody

Mouse Monoclonal Antibody [Clone PU1/2146]

Catalog No	Format	Size
6688-MSM2-P0	Purified Ab with BSA and Azide at 200ug/ml	20 ug
6688-MSM2-P1	Purified Ab with BSA and Azide at 200ug/ml	100 ug
6688-MSM2-P1ABX	Purified Ab WITHOUT BSA and Azide at 1.0mg/ml	100 ug

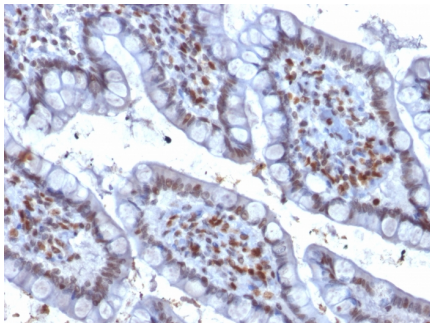
Applications	Tested Dillution	Note
Flow Cytometry (Flow)	1-2ug/million cells	
Immunofluorescence (IF)	1-3ug/ml	
Western Blot (WB)	2-4ug/ml	

### Product Details

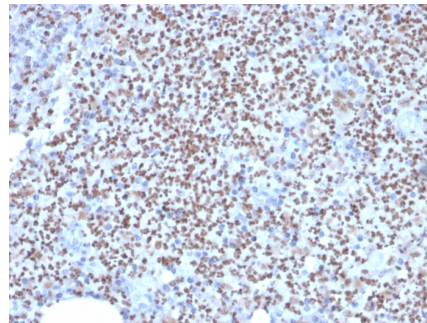
<b>Clone</b>	PU1/2146
<b>Gene Name</b>	SPI1
<b>Immunogen</b>	Recombinant fragment (around aa 16-170) of human PU.1 protein (Exact sequence is proprietary)
<b>Host</b>	Mouse
<b>Clonality</b>	Monoclonal
<b>Isotype / Light Chain</b>	IgG2b / Kappa
<b>Mol. Weight of Antigen</b>	40kDa
<b>Cellular Localization</b>	Nucleus
<b>Species Reactivity</b>	Human
<b>Positive Control</b>	Colon carcinoma., Hodgkin s Lymphoma, K562 or THP-1 cells. Lymph Node, Ramos, Spleen

*\*Optimal dilution for a specific application should be determined.*

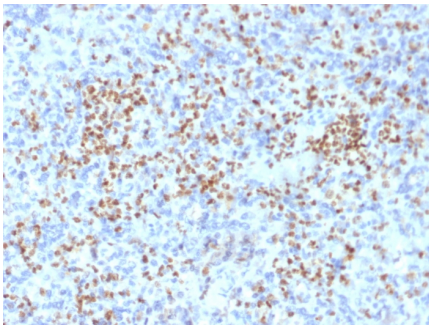
### Product Images for PU.1 (SPI-1) (B-Cell Marker) Antibody



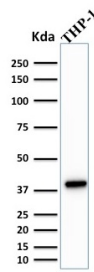
Formalin-fixed, paraffin-embedded human Colon Carcinoma stained with PU.1-Monospecific Mouse Monoclonal Antibody (PU1/2146).



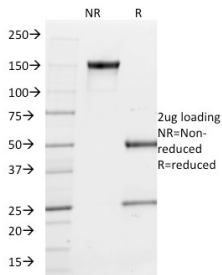
Formalin-fixed, paraffin-embedded human Lymph Node stained with PU.1-Monospecific Mouse Monoclonal Antibody (PU1/2146).



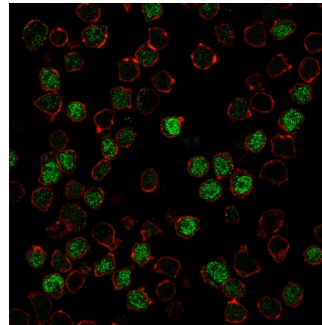
Formalin-fixed, paraffin-embedded human Spleen stained with PU.1-Monospecific Mouse Monoclonal Antibody (PU1/2146).



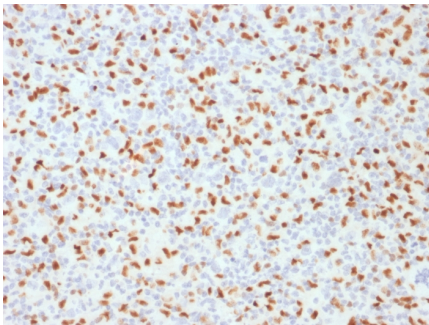
Western Blot Analysis of THP-1 cell lysate using PU.1-Monospecific Mouse Monoclonal Antibody (PU1/2146).



SDS-PAGE Analysis Purified PU.1-Monospecific Mouse Monoclonal Antibody (PU1/2146). Confirmation of Integrity and Purity of Antibody.



Immunofluorescence Analysis of PFA-fixed Ramos cells labeling PU.1 with PU.1 Mouse Monoclonal Antibody (PU1/2146) followed by goat anti-mouse IgG-CF488 (Green). Membrane is labeled with Phalloiden (Red).



Formalin-fixed, paraffin-embedded human Hodgkin's Lymphoma stained with PU.1-Monospecific Mouse Monoclonal Antibody (PU1/2146).

### Specificity & Comments

PU.1 is a member of the ETS family of transcription factors and is important for normal B-cell development. It is expressed in the myeloid lineage and in immature as well as mature B-lymphocytes, with the exception of plasma cells. PU.1 is expressed in germinal center B-cells and mantle B-cells. Various lymphomas are also positive for this marker. It is essential during early B-cell differentiation. The absence of PU.1 results in total block of B-cell development at the pre-pro stage. PU.1 plays a key role in normal myeloid differentiation, and regulates the expression of immunoglobulin and other genes that are important for B-cell development.

### Limitations and Warranty

This antibody is available for research use only and is not approved for use in diagnosis. There are no warranties, expressed or implied, which extend beyond this description. Company is not liable for any personal injury or economic loss resulting from this product.

### Supplied As

200ug/ml of Ab purified from Bioreactor Concentrate by Protein A/G. Prepared in 10mM PBS with 0.05% BSA & 0.05% azide. Also available WITHOUT BSA & azide at 1.0mg/ml.

### Storage and Stability

Antibody with azide - store at 2 to 8 °C. Antibody without azide - store at -20 to -80 °C. Antibody is stable for 24 months. Non-hazardous. No MSDS required.

### Research Areas

Developmental Biology, Nuclear Marker, Transcription Factors