

Recombinant SOX10 (Melanoma Marker) Antibody

Rabbit Monoclonal Antibody [Clone SOX10/2311R]

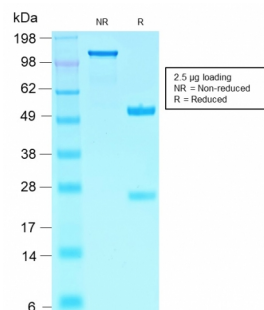
Catalog No	Format	Size
6663-RBM5-P0	Purified Ab with BSA and Azide	200ug/ml
6663-RBM5-P1	Purified Ab with BSA and Azide	200ug/ml
6663-RBM5-P1ABX	Purified Ab WITHOUT BSA and Azide	1.0mg/ml

Applications	Tested Dillution
Immunohistochemistry (IHC)	1-2ug/ml
Western Blot (WB)	2-4ug/ml

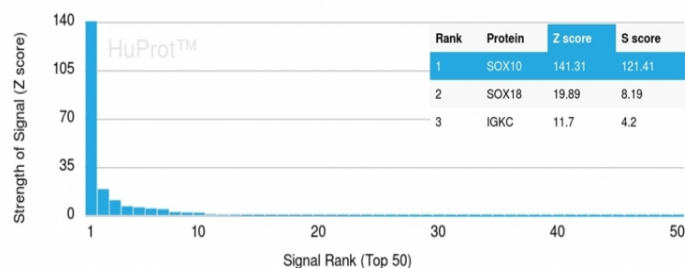
Product Details	
Clone	SOX10/2311R
Gene Name	SOX10
Immunogen	Recombinant fragment (around aa115-269) of human SOX10 protein (exact sequence is proprietary)
Host	Rabbit
Clonality	Monoclonal
Isotype / Light Chain	IgG / Kappa
Mol. Weight of Antigen	49-58kDa
Cellular Localization	Cytoplasm, Mitochondrion outer membrane, Nucleus
Species Reactivity	Human, Mouse
Positive Control	Breast Carcinomas, COLO-38 or HepG2 cells. Melanomas, gliomas.

**Optimal dilution for a specific application should be determined.*

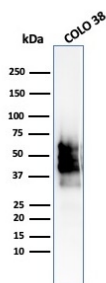
Product Images for Recombinant SOX10 (Melanoma Marker) Antibody



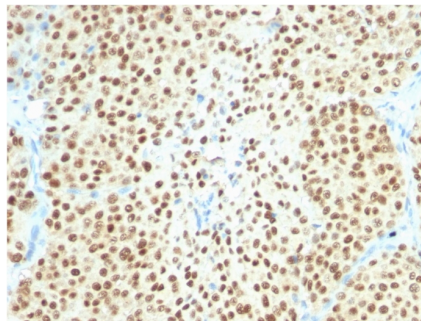
SDS-PAGE Analysis of Purified SOX10-Monospecific Recombinant Rabbit Monoclonal Antibody (SOX10/2311R). Confirmation of Integrity and Purity of Antibody.



Analysis of Protein Array containing more than 19,000 full-length human proteins using SOX10-Monospecific Rabbit Monoclonal Antibody (SOX10/2311R) Z- and S- Score: The Z-score represents the strength of a signal that a monoclonal antibody (Monoclonal Antibody) (in combination with a fluorescently-tagged anti-IgG secondary antibody) produces when binding to a particular protein on the HuProt™ array. Z-scores are described in units of standard deviations (SD's) above the mean value of all signals generated on that array. If targets on HuProt™ are arranged in descending order of the Z-score, the S-score is the difference (also in units of SD's) between the Z-score. S-score therefore represents the relative target specificity of a Monoclonal Antibody to its intended target. A Monoclonal Antibody is considered to be specific to its intended target, if the Monoclonal Antibody has an S-score of at least 2.5. For example, if a Monoclonal Antibody binds to protein X with a Z-score of 43 and to protein Y with a Z-score of 14, then the S-score for the binding of that Monoclonal Antibody to protein X is equal to 29.



Western Blot Analysis of COLO-38 cell lysate using SOX10-Monospecific Recombinant Rabbit Monoclonal Antibody (SOX10/2311R).



Formalin-fixed, paraffin-embedded human Melanoma stained with SOX10-Monospecific Recombinant Rabbit Monoclonal Antibody (SOX10/2311R).

Specificity & Comments

SOX genes comprise a family of genes that are related to the mammalian sex-determining gene SRY. These genes similarly contain sequences that encode for the HMG-box domain, which is responsible for the sequence-specific DNA-binding activity. SOX-10 is a sensitive marker of melanoma, including conventional, spindled, and desmoplastic subtypes. It is expressed by metastatic melanomas and nodal capsular nevus in sentinel lymph nodes, but not by other lymph node components such as dendritic cells, which usually express S100 protein. Commonly used melanoma markers, such as anti-HMB-45 and anti-Melan-A, are poorly expressed in desmoplastic melanomas while SOX-10 is moderately to strongly expressed in desmoplastic melanomas. SOX-10 is considered as a very reliable marker for recognizing residual desmoplastic melanomas. In normal tissues, it is expressed in Schwann cells, melanocytes, and myoepithelial cells of salivary, bronchial and mammary glands. SOX-10 expression is also observed in mast cells.

Research Areas

Developmental Biology, Neural Stem Cells, Nuclear Marker

Known Applications & Suggested Dilutions

Western Blot (2-4ug/ml) | Immunohistochemistry (Formalin-fixed) (1-2ug/ml for 30 minutes at RT)(Staining of formalin-fixed tissues requires heating tissue sections in 10mM Tris with 1mM EDTA, pH 9.0, for 45 min at 95degC followed by cooling at RT for 20 minutes) | Optimal dilution for a specific application should be determined.

Limitations and Warranty

This antibody is available for research use only and is not approved for use in diagnosis.

There are no warranties, expressed or implied, which extend beyond this description. Company is not liable for any personal injury or economic loss resulting from this product.

Supplied As

200ug/ml of Ab Purified from Bioreactor Concentrate by Protein A/G. Prepared in 10mM PBS with 0.05% BSA & 0.05% azide. Also available WITHOUT BSA & azide at 1.0mg/ml.

Storage and Stability

Antibody with azide - store at 2 to 8°C. Antibody without azide - store at -20 to -80°C. Antibody is stable for 24 months. Non-hazardous. No MSDS required.