

## SOX2 (Embryonic Stem CellMarker) Antibody

Mouse Monoclonal Antibody [Clone SOX2/1791]

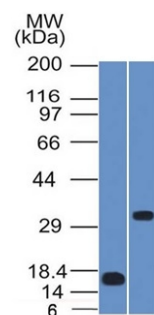
Catalog No	Format	Size
6657-MSM1-P0	Purified Ab with BSA and Azide	200ug/ml
6657-MSM1-P1	Purified Ab with BSA and Azide	200ug/ml
6657-MSM1-P1ABX	Purified Ab WITHOUT BSA and Azide	1.0mg/ml

Applications	Tested Dillution
Immunohistochemistry (IHC)	1-2ug/ml
Western Blot (WB)	2-4ug/ml

Product Details	
Clone	SOX2/1791
Gene Name	SOX2
Immunogen	Recombinant fragment (within aa176-305) of human SOX2 protein (exact sequence is proprietary)
Host	Mouse
Clonality	Monoclonal
Isotype / Light Chain	IgG2b / Kappa
Mol. Weight of Antigen	34kDa
Cellular Localization	Cytoplasm, Nucleus, Nucleus speckle
Species Reactivity	Human, Mouse
Positive Control	A549, NCCIT cells. Lung or Cervicalcarcinoma.

*\*Optimal dilution for a specific application should be determined.*

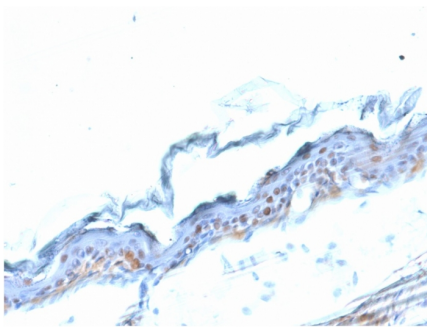
### Product Images for SOX2 (Embryonic Stem CellMarker) Antibody



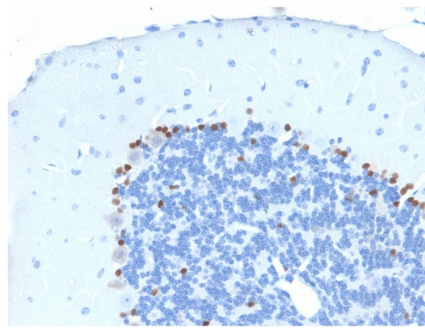
Western Blot of Recombinant SOX2 protein fragment and NCCIT cell lysate using SOX2 Mouse Monoclonal Antibody (SOX2/1791).



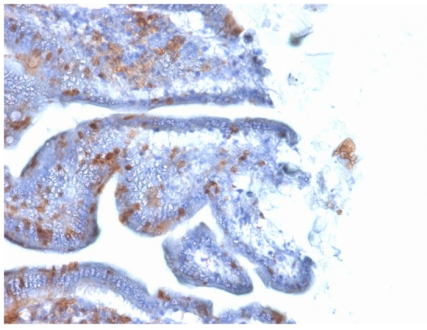
Formalin-fixed, paraffin-embedded human Lung Carcinoma stained with SOX2 Mouse Monoclonal Antibody (SOX2/1791).



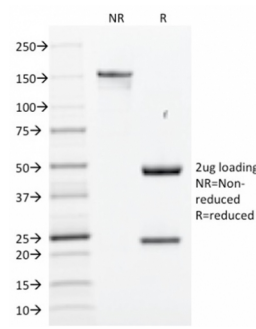
Formalin-fixed, paraffin-embedded MouseStomach stained with SOX2 Mouse Monoclonal Antibody (SOX2/1791).



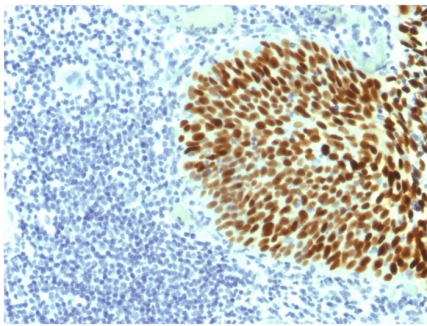
Formalin-fixed, paraffin-embedded MouseBrain stained with SOX2 Mouse Monoclonal Antibody (SOX2/1791).



Formalin-fixed, paraffin-embedded MouseIntestine stained with SOX2 Mouse Monoclonal Antibody (SOX2/1791).



SDS-PAGE Analysis Purified SOX2 Mouse Monoclonal Antibody (SOX2/1791). Confirmation of Integrity and Purity of Antibody.



Formalin-fixed, paraffin-embedded human Cervical Carcinoma stained with SOX2 Mouse Monoclonal Antibody (SOX2/1791).

### Specificity & Comments

SOX2 is required for stem cell maintenance in the central nervous system, and it also regulates gene expression in the stomach. SOX2 is necessary for regulating multiple transcription factors that affect Oct 3/4 expression. An essential function of SOX2 is to stabilize embryonic stem cells in a pluripotent state by maintaining the requisite level of Oct 3/4 expression. Reportedly, SOX2 is associated with aggressive phenotypes of breast, head and neck, gastric, colorectal, bladder, and small cell lung cancers. However, SOX2 is expressed in a high percentage of lung squamous cell carcinomas and has been shown to be an independent favorable prognostic marker.

### Research Areas

Autophagy, Cancer, Developmental Biology, Immunology, Stem Cell, Cytokine Signaling, Neural Stem Cells, Signal Transduction, Stem Cell Differentiation, Transcription Factors

### Known Applications & Suggested Dilutions

ELISA (Use Ab at 2-4ug/ml for coating) (Order Ab without BSA) | Western Blot (1-2ug/ml) | Immunohistochemistry (Formalin-fixed) (1-2ug/ml for 30 min at RT), (Staining of formalin-fixed tissues requires heating tissue sections in 10mM Tris with 1mM EDTA, pH 9.0, for 45 min at 95°C followed by cooling at RT for 20 minutes) | Optimal dilution for a specific application should be determined.

### Limitations and Warranty

This antibody is available for research use only and is not approved for use in diagnosis.

There are no warranties, expressed or implied, which extend beyond this description. Company is not liable for any personal injury or economic loss resulting from this product.

### Supplied As

200ug/ml of Ab Purified from Bioreactor Concentrate by Protein A/G. Prepared in 10mM PBS with 0.05% BSA & 0.05% azide. Also available WITHOUT BSA & azide at 1.0mg/ml.

### Storage and Stability

Antibody with azide - store at 2 to 8°C. Antibody without azide - store at -20 to -80°C. Antibody is stable for 24 months. Non-hazardous. No MSDS required.