

Recombinant Fascin-1 (Reed-Sternberg CellMarker) Antibody

Mouse Monoclonal Antibody [Clone rFSCN1/6464]

| Catalog No | Format | Size |
|-----------------|---|--------|
| 6624-MSM4-P0 | Purified Ab with BSA and Azide at 200ug/ml | 20 ug |
| 6624-MSM4-P1 | Purified Ab with BSA and Azide at 200ug/ml | 100 ug |
| 6624-MSM4-P1ABX | Purified Ab WITHOUT BSA and Azide at 1.0mg/ml | 100 ug |

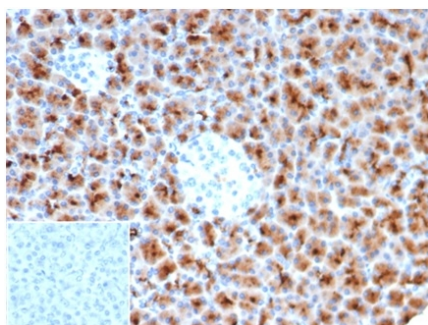
| Applications | Tested Dillution | Note |
|----------------------------|------------------|---|
| Immunohistochemistry (IHC) | 1-2ug/ml | 30 min at RT. Staining of formalin-fixed tissues requires heating tissue sections in 10mM Tris with 1mM EDTA, pH 9.0, for 45 min at 95°C followed by cooling at RT for 20 minutes |

Product Details

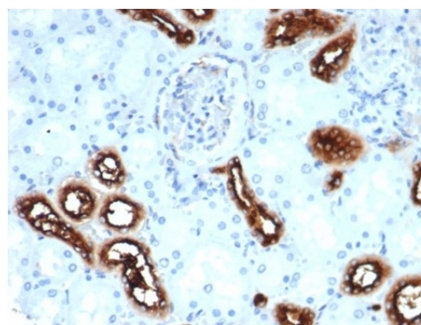
| | |
|-------------------------------|--|
| Clone | rFSCN1/6464 |
| Gene Name | FSCN1 |
| Immunogen | Full length recombinant human FSCN1 protein |
| Host | Mouse |
| Clonality | Monoclonal |
| Isotype / Light Chain | IgG2a / Kappa |
| Mol. Weight of Antigen | 55kDa |
| Cellular Localization | Cell cortex, Cell junction, Cell projection, Cytoplasm, Cytoskeleton, Cytosol, Filopodium, Invadopodium, Microvillus, Stress fiber |
| Species Reactivity | Human |
| Positive Control | HeLa, MCF-7, Ovarian or Testicular Carcinoma., PC-3 or BEWO cells. Hodgkin s lymphoma |

*Optimal dilution for a specific application should be determined.

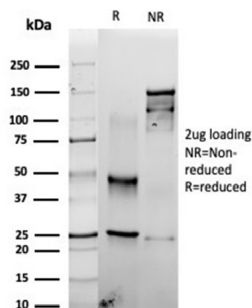
Product Images for Recombinant Fascin-1 (Reed-Sternberg CellMarker) Antibody



IHC analysis of formalin-fixed, paraffin-embedded human pancreas. Cytoplasmic staining using rFSCN1/6464 at 2ug/ml in PBS for 30min RT. Inset: PBS instead of primary antibody; secondary only negative control.



IHC analysis of formalin-fixed, paraffin-embedded human kidney. Cytoplasmic staining using rFSCN1/6464 at 2ug/ml in PBS for 30min RT. HIER: Tris/EDTA, pH9.0, 45min. 2°C: HRP-polymer, 30min. DAB, 5min.



SDS-PAGE Analysis of Purified Fascin-1 Recombinant Mouse Monoclonal Antibody (rFSCN1/6464). Confirmation of Integrity and Purity of Antibody.

Specificity & Comments

Recognizes a protein of 55kDa, which is identified as fascin-1. Its actin binding ability is regulated by phosphorylation. Antibody to fascin-1 is a very sensitive marker for Reed-Sternberg cells and variants in nodular sclerosis, mixed cellularity, and lymphocyte depletion Hodgkin s disease. It is uniformly negative in lymphoid cells, plasma cells, and myeloid cells. Fascin-1 is also expressed in dendritic cells. This marker may be helpful to distinguish between Hodgkin lymphoma and non-Hodgkin lymphoma in difficult cases. Also, the lack of expression of fascin-1 in the neoplastic follicles in follicular lymphoma may be helpful in distinguishing these lymphomas from reactive follicular hyperplasia in which the number of follicular dendritic cells is normal or increased. Antibody to fascin-1 has been suggested as a prognostic marker in neuroendocrine neoplasms of the lung as well as in ovarian cancer. Fascin-1 expression may be induced by Epstein-Barr virus (EBV) infection of B cells with the possibility that viral induction of fascin in lymphoid or other cell types must also be considered in EBV-positive cases.

Limitations and Warranty

This antibody is available for research use only and is not approved for use in diagnosis. There are no warranties, expressed or implied, which extend beyond this description. Company is not liable for any personal injury or economic loss resulting from this product.

Supplied As

200ug/ml of Ab purified from Bioreactor Concentrate by Protein A/G. Prepared in 10mM PBS with 0.05% BSA & 0.05% azide. Also available WITHOUT BSA & azide at 1.0mg/ml.

Storage and Stability

Antibody with azide - store at 2 to 8 °C. Antibody without azide - store at -20 to -80 °C. Antibody is stable for 24 months. Non-hazardous. No MSDS required.

Research Areas

Cytokine Signaling, Immunology