

## SIGLEC1 / CD169 / Sialoadhesin Antibody

Mouse Monoclonal Antibody [Clone HSn 7D2]

Catalog No	Format	Size
6614-MSM1-P0	Purified Ab with BSA and Azide at 200ug/ml	20 ug
6614-MSM1-P1	Purified Ab with BSA and Azide at 200ug/ml	100 ug
6614-MSM1-P1ABX	Purified Ab WITHOUT BSA and Azide at 1.0mg/ml	100 ug

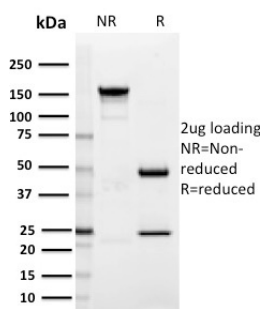
Applications	Tested Dillution	Note
Flow Cytometry (Flow)	1-2ug/million cells	
Immunofluorescence (IF)	1-3ug/ml	
Immunohistochemistry (IHC)	1-2ug/ml	30 min at RT. Staining of formalin-fixed tissues requires heating tissue sections in 10mM Tris with 1mM EDTA, pH 9.0, for 45 min at 95°C followed by cooling at RT for 20 minutes
Western Blot (WB)	2-4ug/ml	

### Product Details

<b>Clone</b>	HSn 7D2
<b>Gene Name</b>	SIGLEC1
<b>Immunogen</b>	Fc fusion protein containing N-terminal 4 domains of human sialoadhesin.
<b>Host</b>	Mouse
<b>Clonality</b>	Monoclonal
<b>Isotype / Light Chain</b>	IgG1 / Kappa
<b>Mol. Weight of Antigen</b>	185kDa
<b>Cellular Localization</b>	Cell membrane, Secreted
<b>Species Reactivity</b>	Human
<b>Positive Control</b>	Human spleen. Human peripheral blood monocytes or MCF7 cells.

\*Optimal dilution for a specific application should be determined.

### Product Images for SIGLEC1 / CD169 / Sialoadhesin Antibody



SDS-PAGE Analysis of Purified SIGLEC1 / CD169 Mouse Monoclonal Antibody (HSn 7D2). Confirmation of Integrity and Purity of Antibody.

### **Specificity & Comments**

Two families of mammalian lectin-like adhesion molecules, the selectins and the sialoadhesins, bind glycoconjugate ligands in a sialic acid-dependent manner. The sialic acid-binding immunoglobulin superfamily lectins, designated siglecs or sialoadhesins, are immunoglobulin superfamily members that recognize sialylated ligands. The common sialic acids of mammalian cells are N-acetylneuraminic acid (Neu5Ac) and N-glycolylneuraminic acid (Neu5Gc). The human Siglec-1 gene maps to chromosome 20p13 and encodes a 1,709 amino acid protein, also known as CD169. Alternative splicing of the Siglec-1 gene produces a variant, encoding a type I transmembrane protein isoform that is soluble rather than membrane-bound. Studies have shown human Siglec-1 has greater affinity for Neu5Ac over Neu5Gc. Siglec-1 is a sialic acid-binding receptor that is expressed in hemopoietic cells. It mediates local cell-cell interactions in lymphoid tissues and can be detected at contact points of macrophages with other macrophages, sinus-lining cells and reticulum cells.

---

### **Limitations and Warranty**

This antibody is available for research use only and is not approved for use in diagnosis. There are no warranties, expressed or implied, which extend beyond this description. Company is not liable for any personal injury or economic loss resulting from this product.

---

### **Supplied As**

200ug/ml of Ab Purified from Bioreactor Concentrate by Protein A/G. Prepared in 10mM PBS with 0.05% BSA & 0.05% azide. Also available WITHOUT BSA & azide at 1.0mg/ml.

---

### **Storage and Stability**

Antibody with azide - store at 2 to 8°C. Antibody without azide - store at -20 to -80°C. Antibody is stable for 24 months. Non-hazardous. No MSDS required.

---

### **Research Areas**

Bladder Cancer, Breast Cancer, Cancer

---