

gp100 / Melanosome / PMEL17 / SILV (Melanoma Marker) Antibody

Rabbit Polyclonal Antibody [Clone N/A]

Catalog No	Format	Size
6490-RBP6-P0	Purified Ab with BSA and Azide at 200ug/ml	20 ug
6490-RBP6-P1	Purified Ab with BSA and Azide at 200ug/ml	100 ug
6490-RBP6-P1ABX	Purified Ab WITHOUT BSA and Azide at 1.0mg/ml	100 ug

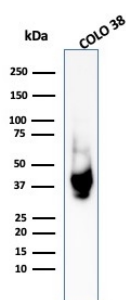
Applications	Tested Dillution	Note
Flow Cytometry (Flow)	1-2ug/million cells	
Immunofluorescence (IF)	1-3ug/ml	
Immunohistochemistry (IHC)	1-2ug/ml	30 min at RT. Staining of formalin-fixed tissues requires heating tissue sections in 10mM Tris with 1mM EDTA, pH 9.0, for 45 min at 95°C followed by cooling at RT for 20 minutes
Western Blot (WB)	2-4ug/ml	

Product Details

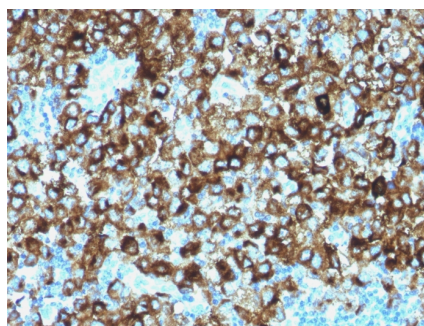
Clone	N/A
Gene Name	PMEL
Immunogen	Recombinant full-length human SILV protein
Host	Rabbit
Clonality	Polyclonal
Isotype / Light Chain	IgG / Kappa
Mol. Weight of Antigen	26-100kDa
Cellular Localization	Endoplasmic reticulum membrane, Endosome, Golgi apparatus, Melanosome, Multivesicular body, Secreted
Species Reactivity	Human
Positive Control	CACO-38 or SK-MEL-28 cells. Melanoma.

*Optimal dilution for a specific application should be determined.

Product Images for gp100 / Melanosome / PMEL17 / SILV (Melanoma Marker) Antibody



Western Blot Analysis of COLO-38 cell lysate using gp100 Rabbit Polyclonal Antibody



Formalin-fixed, paraffin-embedded human Melanoma stained with gp100 Rabbit Polyclonal Antibody.

Specificity & Comments

The gp100 molecule is a 100kDa glycosylated protein that is cleaved into a small (26kDa) carboxy-terminal fragment and a larger amino-terminal section (60-64 kDa), which is subsequently cleaved to generate 26kDa and 34-38kDa fragments. Cytotoxic T lymphocytes (CTL's) recognize melanoma-associated antigens, which belong to three main groups. These groups include tumor-associated testis-specific antigens, melanocyte differentiation antigens and mutated or aberrantly expressed antigens, which are routinely used as markers to identify melanomas based on their binding to specific monoclonal antibodies. gp100, also designated ME20-M, ME20-S and PMEL 17, is classified as a melanocyte differentiation antigen and is expressed at low levels in normal cell lines and tissues, but is upregulated in melanocytes. gp100 is a highly glycosylated protein. It is also the product of proteolytic cleavage, which results in a secreted protein.

Limitations and Warranty

This antibody is available for research use only and is not approved for use in diagnosis. There are no warranties, expressed or implied, which extend beyond this description. Company is not liable for any personal injury or economic loss resulting from this product.

Supplied As

200ug/ml of Ab Purified by Protein A. Prepared in 10mM PBS with 0.05% BSA & 0.05% azide. Also available WITHOUT BSA & azide at 1.0mg/ml.

Storage and Stability

Antibody with azide - store at 2 to 8°C. Antibody without azide - store at -20 to -80°C. Antibody is stable for 24 months. Non-hazardous. No MSDS required.

Research Areas

Cardiovascular
