

Recombinant gp100 / Melanosome / PMEL17 / SILV (Melanoma Marker) Antibody

Rabbit Monoclonal Antibody [Clone PMEL/1825R]

Catalog No	Format	Size
6490-RBM5-P0	Purified Ab with BSA and Azide at 200ug/ml	20 ug
6490-RBM5-P1	Purified Ab with BSA and Azide at 200ug/ml	100 ug
6490-RBM5-P1ABX	Purified Ab WITHOUT BSA and Azide at 1.0mg/ml	100 ug

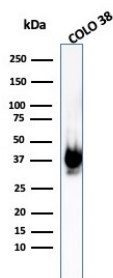
Applications	Tested Dillution	Note
Immunohistochemistry (IHC)	1-2ug/ml	30 min at RT. Staining of formalin-fixed tissues requires heating tissue sections in 10mM Tris with 1mM EDTA, pH 9.0, for 45 min at 95°C followed by cooling at RT for 20 minutes
Western Blot (WB)	2-4ug/ml	

Product Details

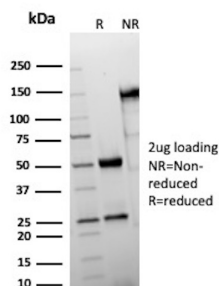
Clone	PMEL/1825R
Gene Name	PMEL
Immunogen	Recombinant full-length human gp100 protein
Host	Rabbit
Clonality	Monoclonal
Isotype / Light Chain	IgG / Kappa
Mol. Weight of Antigen	26-100kDa
Cellular Localization	Endoplasmic reticulum membrane, Endosome, Golgi apparatus, Melanosome, Multivesicular body, Secreted
Species Reactivity	Human
Positive Control	COLO-38 or SK-MEL-28 cells. Human melanoma.

*Optimal dilution for a specific application should be determined.

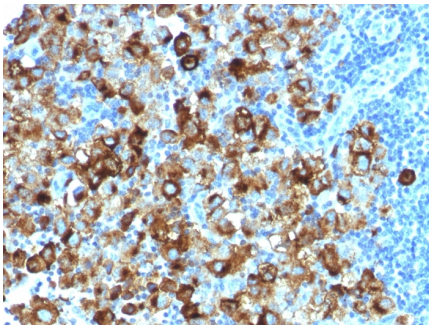
Product Images for Recombinant gp100 / Melanosome / PMEL17 / SILV (Melanoma Marker) Antibody



SDS-PAGE Analysis of Purified gp100 Rabbit Recombinant Monoclonal Antibody (PMEL/1825R). Confirmation of Purity and Integrity of Antibody.



SDS-PAGE Analysis of Purified Melanocyte protein PMEL Recombinant Rabbit Monoclonal Antibody (PMEL/1825R). Confirmation of Purity and Integrity of Antibody.



Formalin-fixed, paraffin-embedded human melanoma stained with gp100 Rabbit Recombinant Monoclonal Antibody (PMEL/1825R).

Specificity & Comments

The gp100 molecule is a 100kDa glycosylated protein that is cleaved into a small (26kDa) carboxy-terminal fragment and a larger amino-terminal section (60 64 kDa), which is subsequently cleaved to generate 26kDa and 34 38kDa fragments. By immunohistochemistry, it specifically recognizes a protein in melanocytes and melanomas. This MAb reacts with junctional and blue nevus cells and variably with fetal and neonatal melanocytes. Intradermal nevi, normal adult melanocytes, and non-melanocytic cells are negative. It does not stain tumor cells of epithelial, lymphoid, glial, or mesenchymal origin. Metastatic amelanotic melanoma can often be confused with a variety of poorly differentiated carcinomas, large cell lymphomas, and sarcomas using H & E stains alone. It is also difficult to differentiate melanoma from spindle cell carcinomas and various types of mesenchymal neoplasms. This MAb stains fetal and neonatal melanocytes, junctional and blue nevus cells, and malignant melanoma. This MAb also stains Angiomyolipoma (PEComa).

Limitations and Warranty

This antibody is available for research use only and is not approved for use in diagnosis. There are no warranties, expressed or implied, which extend beyond this description. Company is not liable for any personal injury or economic loss resulting from this product.

Supplied As

200ug/ml of Ab purified from Bioreactor Concentrate by Protein A/G. Prepared in 10mM PBS with 0.05% BSA & 0.05% azide. Also available WITHOUT BSA & azide at 1.0mg/ml.

Storage and Stability

Antibody with azide - store at 2 to 8 °C. Antibody without azide - store at -20 to -80 °C. Antibody is stable for 24 months. Non-hazardous. No MSDS required.

Research Areas

Cardiovascular