

Melanosome gp100 / PMEL17 / SILV (Melanoma Marker) Antibody

Mouse Monoclonal Antibody [Clone SPM286]

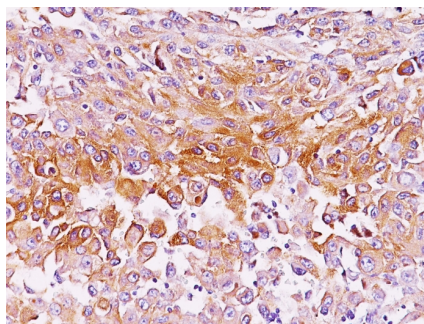
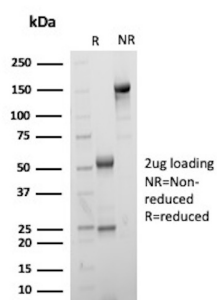
Catalog No	Format	Size
6490-MSM2X-P0	Purified Ab with BSA and Azide at 200ug/ml	20 ug
6490-MSM2X-P1	Purified Ab with BSA and Azide at 200ug/ml	100 ug
6490-MSM2X-P1ABX	Purified Ab WITHOUT BSA and Azide at 1.0mg/ml	100 ug

Applications	Tested Dillution	Note
Flow Cytometry (Flow)	1-2ug/million cells	
Immunofluorescence (IF)	1-3ug/ml	
Immunohistochemistry (IHC)	1-2ug/ml	30 min at RT. Staining of formalin-fixed tissues requires heating tissue sections in 10mM Tris with 1mM EDTA, pH 9.0, for 45 min at 95°C followed by cooling at RT for 20 minutes

Product Details	
Clone	SPM286
Gene Name	PMEL
Immunogen	Membranes from a human melanoma metastasis
Host	Mouse
Clonality	Monoclonal
Isotype / Light Chain	IgG2b / Kappa
Mol. Weight of Antigen	90-100kDa
Cellular Localization	Endoplasmic reticulum membrane, Endosome, Golgi apparatus, Melanosome, Multivesicular body, Secreted
Species Reactivity	Horse, Human
Positive Control	SK-MEL-28 cells. Melanoma.

**Optimal dilution for a specific application should be determined.*

Product Images for Melanosome gp100 / PMEL17 / SILV (Melanoma Marker) Antibody



SDS-PAGE Analysis of Purified Melanocyte protein PMEL Mouse Monoclonal Antibody (SPM286). Confirmation of Purity and Integrity of Antibody.

Formalin-fixed, paraffin-embedded human Melanoma stained with gp100 Monoclonal Antibody (SPM286).

Specificity & Comments

By immunohistochemistry, it specifically recognizes a protein in melanocytes and melanomas. This MAb reacts with junctional and blue nevus cells and variably with fetal and neonatal melanocytes. Intradermal nevi, normal adult melanocytes, and non-melanocytic cells are negative. It does not stain tumor cells of epithelial, lymphoid, glial, or mesenchymal origin. This Mab labels formalin-fixed, paraffin-embedded melanomas and other tumors showing melanocytic differentiation.

Supplied As

200ug/ml of Ab Purified from Bioreactor Concentrate by Protein A/G. Prepared in 10mM PBS with 0.05% BSA & 0.05% azide. Also available WITHOUT BSA & azide at 1.0mg/ml.

Storage and Stability

Antibody with azide - store at 2 to 8°C. Antibody without azide - store at -20 to -80°C. Antibody is stable for 24 months. Non-hazardous. No MSDS required.

Research Areas

Cardiovascular

Limitations and Warranty

This antibody is available for research use only and is not approved for use in diagnosis. There are no warranties, expressed or implied, which extend beyond this description. Company is not liable for any personal injury or economic loss resulting from this product.
