

Interleukin-25 (IL-25) / IL-17E Antibody

Mouse Monoclonal Antibody [Clone IL25/625]

Catalog No	Format	Size
64806-MSM1-P0	Purified Ab with BSA and Azide at 200ug/ml	20 ug
64806-MSM1-P1	Purified Ab with BSA and Azide at 200ug/ml	100 ug
64806-MSM1-P1ABX	Purified Ab WITHOUT BSA and Azide at 1.0mg/ml	100 ug

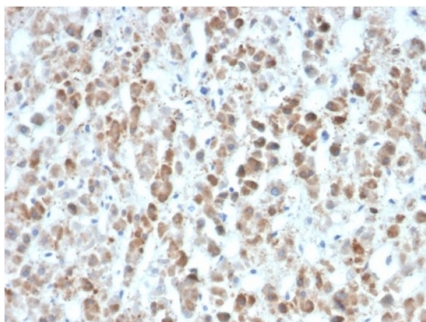
Applications	Tested Dillution	Note
Immunohistochemistry (IHC)	1-2ug/ml	30 min at RT. Staining of formalin-fixed tissues requires heating tissue sections in 10mM Tris with 1mM EDTA, pH 9.0, for 45 min at 95°C followed by cooling at RT for 20 minutes

Product Details

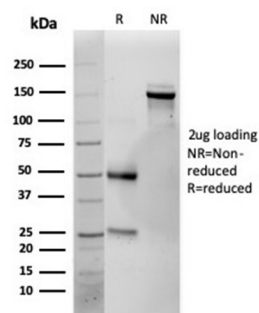
Clone	IL25/625
Gene Name	IL25
Immunogen	Recombinant fragment of human IL25 protein (exact sequence is proprietary)
Host	Mouse
Clonality	Monoclonal
Isotype / Light Chain	IgG1 / Kappa
Mol. Weight of Antigen	20kDa
Cellular Localization	Secreted
Species Reactivity	Human
Positive Control	Human brain, kidney or lung.

*Optimal dilution for a specific application should be determined.

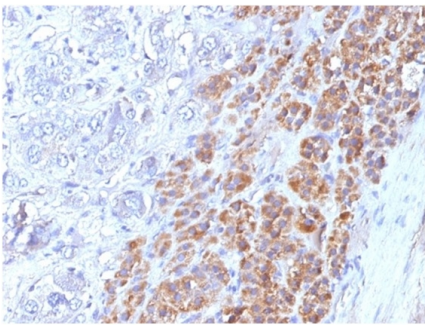
Product Images for Interleukin-25 (IL-25) / IL-17E Antibody



Formalin-fixed, paraffin-embedded human colon carcinoma stained with Interleukin-25 (IL-25) Mouse Monoclonal Antibody (IL25/625). HIER: Tris/EDTA, pH9.0, 45min. 2°C: HRP-polymer, 30min. DAB, 5min.



SDS-PAGE Analysis of Purified Interleukin-25 (IL-25) Mouse Monoclonal Antibody (IL25/625). Confirmation of Purity and Integrity of Antibody.



Formalin-fixed, paraffin-embedded human adrenal gland stained with Interleukin-25 (IL-25) Mouse Monoclonal Antibody (IL25/625). HIER: Tris/EDTA, pH9.0, 45min. 2°C: HRP-polymer, 30min. DAB, 5min.

Specificity & Comments

Cytokines are small, soluble proteins with pleiotropic effects on a variety of cell types. Cytokines have a regulatory function over the immune system and mediate aspects of inflammatory response. They exert their biological effects through the binding of membrane-bound receptors which, in turn, initiate signal transduction cascades and elicit physiological changes in their target cell. Interleukin-17 (IL-17) and its cognate receptor, IL-17R, are an example of such a cytokine receptor pair. Originally identified as a rodent cDNA termed CTLA8, IL-17 is capable of inducing the secretion of IL-6 and IL-8 and augmenting the expression of ICAM-1 in human fibroblast cultures. The IL-17 protein exhibits a striking degree of homology with the HSV-13 protein which mimics its function. The IL-17 receptor is a type I transmembrane protein 864 amino acids in length that is highly expressed in spleen and kidney.

Limitations and Warranty

This antibody is available for research use only and is not approved for use in diagnosis. There are no warranties, expressed or implied, which extend beyond this description. Company is not liable for any personal injury or economic loss resulting from this product.

Supplied As

200ug/ml of Ab purified from Bioreactor Concentrate by Protein A/G. Prepared in 10mM PBS with 0.05% BSA & 0.05% azide. Also available WITHOUT BSA & azide at 1.0mg/ml.

Storage and Stability

Antibody with azide - store at 2 to 8 °C. Antibody without azide - store at -20 to -80 °C. Antibody is stable for 24 months. Non-hazardous. No MSDS required.

Research Areas

Cardiovascular, Cytokine Signaling, Immunology