

CDw75 (B-Cell Marker) Antibody

Mouse Monoclonal Antibody [Clone ZB55]

Catalog No	Format	Size
6480-MSM2-P0	Purified Ab with BSA and Azide at 200ug/ml	20 ug
6480-MSM2-P1	Purified Ab with BSA and Azide at 200ug/ml	100 ug
6480-MSM2-P1BX	Purified Ab WITHOUT BSA at 1.0mg/ml	100 ug

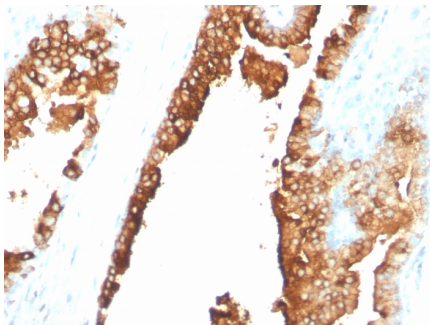
Applications	Tested Dillution	Note
Flow Cytometry (Flow)	1-2ug/million cells	
Immunofluorescence (IF)	1-3ug/ml	
Immunohistochemistry (IHC)	1-2ug/ml	30 min at RT. Staining of formalin-fixed tissues requires heating tissue sections in 10mM Tris with 1mM EDTA, pH 9.0, for 45 min at 95°C followed by cooling at RT for 20 minutes

Product Details

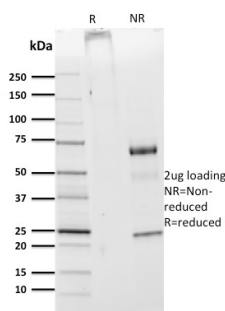
Clone	ZB55
Gene Name	ST6GAL1
Immunogen	CD32 peptides
Host	Mouse
Clonality	Monoclonal
Isotype / Light Chain	IgM / Kappa
Mol. Weight of Antigen	46kDa
Cellular Localization	Golgi apparatus, Golgi stack membrane, Secreted
Species Reactivity	Human
Positive Control	HeLa or Daudi cells (IF/FACS). Germinal center B- cells in a lymph node or tonsil (IHC). Use LN1 s ability to stain surface of erythrocytes as an internal positive control.

*Optimal dilution for a specific application should be determined.

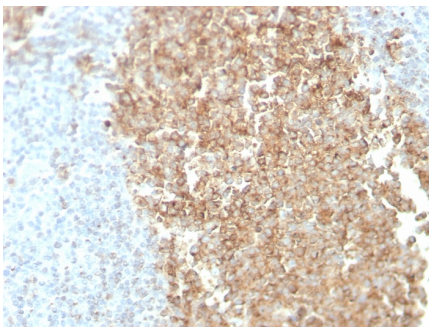
Product Images for CDw75 (B-Cell Marker) Antibody



Formalin-fixed, paraffin-embedded normal human spleen tissue stained with CDw75 Mouse Monoclonal Antibody (ZB55).



SDS-PAGE Analysis of Purified CDw75 Mouse Monoclonal Antibody (ZB55).Confirmation of Purity and Integrity of Antibody.



Formalin-fixed, paraffin-embedded normal human spleen tissue stained with CDw75 Mouse Monoclonal Antibody (ZB55).

Specificity & Comments

Recognizes a neuraminidase-sensitive sialoprotein (CDw75), present on cell membrane and cytoplasm of germinal center B-cells and derived lymphomas. This MAb reacts with RBC precursors of bone marrow, ductal and ciliated epithelial cells of kidney, breast, prostate, pancreas, lung, and with glioblastomas, astrocytomas, and Reed Sternberg cells in lymphocyte predominant Hodgkin s disease. It is shown to be a helpful antibody for ascribing a B-cell phenotype in known lymphoid tissues.

Limitations and Warranty

This antibody is available for research use only and is not approved for use in diagnosis. There are no warranties, expressed or implied, which extend beyond this description. Company is not liable for any personal injury or economic loss resulting from this product.

Supplied As

200ug/ml of Ab Purified from Bioreactor Concentrate by PEG precipitation. Prepared in 10mM PBS with 0.05% BSA & 0.05% azide. Also available WITHOUT BSA & azide at 1.0mg/ml.

Storage and Stability

Antibody with azide - store at 2 to 8°C. Antibody without azide - store at -20 to -80°C. Antibody is stable for 24 months. Non-hazardous. No MSDS required.

Research Areas

Infectious Disease
