

CD62L (L-Selectin) Antibody

Mouse Monoclonal Antibody [Clone LAM1-116]

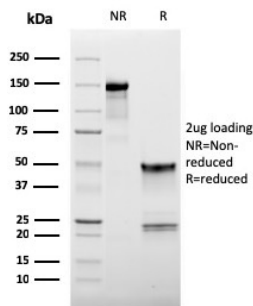
Catalog No	Format	Size
6402-MSM2-P0	Purified Ab with BSA and Azide at 200ug/ml	20 ug
6402-MSM2-P1	Purified Ab with BSA and Azide at 200ug/ml	100 ug
6402-MSM2-P1ABX	Purified Ab WITHOUT BSA and Azide at 1.0mg/ml	100 ug

Applications	Tested Dillution	Note
Flow Cytometry (Flow)	1-2ug/million cells	
Western Blot (WB)	2-4ug/ml	

Product Details	
Clone	LAM1-116
Gene Name	SELL
Immunogen	MAB raised against supernatant from phorbol myristic acid activated human peripheral blood leukocytes.
Host	Mouse
Clonality	Monoclonal
Isotype / Light Chain	IgG1 / Kappa
Mol. Weight of Antigen	65-75kDa
Cellular Localization	Cell membrane
Species Reactivity	Human
Positive Control	HPBL or Jurkat whole cell lysate.

*Optimal dilution for a specific application should be determined.

Product Images for CD62L (L-Selectin) Antibody



SDS-PAGE Analysis of Purified CD62L Mouse Monoclonal Antibody (LAM1-116). Confirmation of Purity and Integrity of Antibody.

Specificity & Comments

Selectins, also designated CD62 antigens, comprise a family of carbohydrate-binding proteins involved in mediating cellular interactions with leukocytes. L-Selectin (also designated LECAM-1 or CD62L) is expressed on the majority of B and naive T cells and on most monocytes, neutrophils and eosinophils. L-Selectin interacts with specific carbohydrates expressed by activated endothelial cells. P-Selectin (also designated GMP-140 or CD62P), expressed on activated platelets and endothelial cells, and E-Selectin (also designated ELMA-1 or CD62E), expressed on endothelial cells, exhibit overlapping ligand specificities. Both recognize sialyl-Le (x) as a ligand and bind to specific carbohydrates on neutrophils and monocytes.

Limitations and Warranty

This antibody is available for research use only and is not approved for use in diagnosis. There are no warranties, expressed or implied, which extend beyond this description. Company is not liable for any personal injury or economic loss resulting from this product.

Supplied As

200ug/ml of Ab Purified from Bioreactor Concentrate by Protein A/G. Prepared in 10mM PBS with 0.05% BSA & 0.05% azide. Also available WITHOUT BSA & azide at 1.0mg/ml.

Storage and Stability

Antibody with azide - store at 2 to 8°C. Antibody without azide - store at -20 to -80°C. Antibody is stable for 24 months. Non-hazardous. No MSDS required.

Research Areas

B Cell Markers, Cardiovascular, Complement System, Hematopoietic Stem Cells, Immunology