

SDHB (Succinate Dehydrogenase B) (Pheochromocytoma Marker) Antibody

Mouse Monoclonal Antibody [Clone SDHB/2126]

Catalog No	Format	Size
6390-MSM1-P0	Purified Ab with BSA and Azide at 200ug/ml	20 ug
6390-MSM1-P1	Purified Ab with BSA and Azide at 200ug/ml	100 ug
6390-MSM1-P1ABX	Purified Ab WITHOUT BSA and Azide at 1.0mg/ml	100 ug

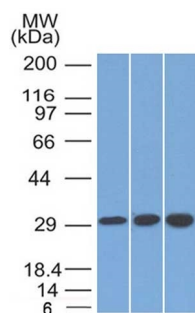
Applications	Tested Dillution	Note
Western Blot (WB)	2-4ug/ml	

Product Details

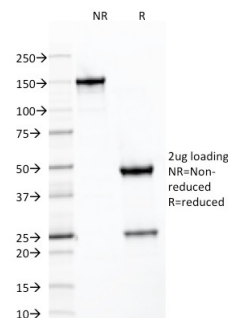
Clone	SDHB/2126
Gene Name	SDHB
Immunogen	Recombinant human SDHB fragment around aa 165-273 (Exact sequence is proprietary)
Host	Mouse
Clonality	Monoclonal
Isotype / Light Chain	IgG1 / Kappa
Mol. Weight of Antigen	32kDa
Cellular Localization	Mitochondrion inner membrane
Species Reactivity	Human
Positive Control	Jurkat or HepG2 Cells. Kidney

*Optimal dilution for a specific application should be determined.

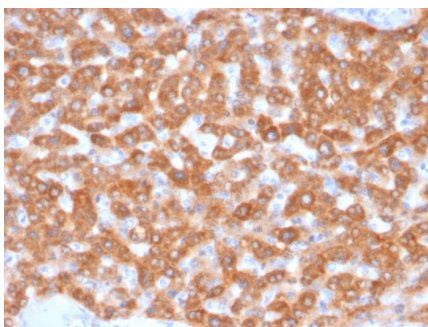
Product Images for SDHB (Succinate Dehydrogenase B) (Pheochromocytoma Marker) Antibody



Western Blot Analysis of 1) 293; 2) Jurkat and 3) HepG2 Cell Lysate with SDHB Mouse Monoclonal Antibody (SDHB/2126).



SDS-PAGE Analysis of Purified SDHB Mouse Monoclonal Antibody (SDHB/2126). Confirmation of Integrity and Purity of Antibody.



Formalin-fixed, paraffin-embedded human Kidney stained with SDHB Mouse Monoclonal Antibody (SDHB/2126).

Specificity & Comments

Succinate dehydrogenase (SDH) is Complex II in the mitochondria, vital for mitochondrial electron transport, as well as Krebs cycle function. Four subunits comprise the SDH protein complex: a flavochrome subunit (SDHA), an iron-sulfur protein (SDHB) and two membrane-bound subunits (SDHC and SDHD) anchored to the inner mitochondrial membrane. The SDH complex functions as a tumor suppressor. Loss of any subunit proteins lead to destabilization of the complex and tumor formation. Antibody to SDHB is helpful in the identification of pheochromocytomas, paragangliomas and GIST.

Limitations and Warranty

This antibody is available for research use only and is not approved for use in diagnosis. There are no warranties, expressed or implied, which extend beyond this description. Company is not liable for any personal injury or economic loss resulting from this product.

Supplied As

200ug/ml of Ab purified from Bioreactor Concentrate by Protein A/G. Prepared in 10mM PBS with 0.05% BSA & 0.05% azide. Also available WITHOUT BSA & azide at 1.0mg/ml.

Storage and Stability

Antibody with azide - store at 2 to 8 °C. Antibody without azide - store at -20 to -80 °C. Antibody is stable for 24 months. Non-hazardous. No MSDS required.

Research Areas

Cardiovascular, Colon Cancer, Mitochondria Marker
