

Monocyte Chemotactic Protein 2 (MCP2) / CCL8 Antibody

Mouse Monoclonal Antibody [Clone CCL8/3312]

Catalog No	Format	Size
6355-MSM2-P0	Purified Ab with BSA and Azide at 200ug/ml	20 ug
6355-MSM2-P1	Purified Ab with BSA and Azide at 200ug/ml	100 ug
6355-MSM2-P1ABX	Purified Ab WITHOUT BSA and Azide at 1.0mg/ml	100 ug

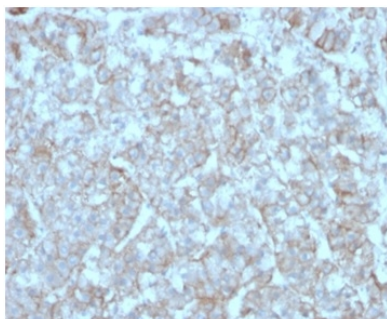
Applications	Tested Dillution	Note
Immunohistochemistry (IHC)	1-2ug/ml	30 min at RT. Staining of formalin-fixed tissues requires heating tissue sections in 10mM Tris with 1mM EDTA, pH 9.0, for 45 min at 95°C followed by cooling at RT for 20 minutes

Product Details

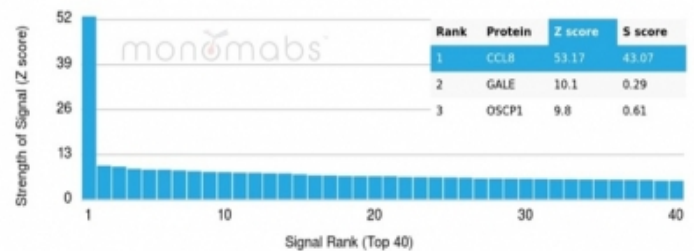
Clone	CCL8/3312
Gene Name	CCL8
Immunogen	Human recombinant MCP2 / CCL8 protein fragment (around aa24-98) (exact sequence is proprietary)
Host	Mouse
Clonality	Monoclonal
Isotype / Light Chain	IgG2b / Kappa
Mol. Weight of Antigen	11kDa
Cellular Localization	Secreted
Species Reactivity	Human
Positive Control	Human small intestine, spleen or adrenal gland tissue.

*Optimal dilution for a specific application should be determined.

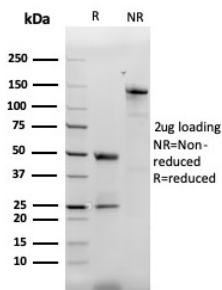
Product Images for Monocyte Chemotactic Protein 2 (MCP2) / CCL8 Antibody



Formalin-fixed, paraffin-embedded human adrenal gland stained with MCP2 / CCL8 Mouse Monoclonal Antibody (CCL8/3312).



Formalin-fixed, paraffin-embedded human adrenal gland stained with MCP2 / CCL8 Mouse Monoclonal Antibody (CCL8/3312).



SDS-PAGE Analysis of Purified MCP2 / CCL8 Mouse Monoclonal Antibody (CCL8/3312). Confirmation of Purity and Integrity of Antibody.

Specificity & Comments

This antimicrobial gene is one of several chemokine genes clustered on the q-arm of chromosome 17. Chemokines form a superfamily of secreted proteins involved in immunoregulatory and inflammatory processes. The superfamily is divided into four subfamilies based on the arrangement of N-terminal cysteine residues of the mature peptide. This chemokine is a member of the CC subfamily which is characterized by two adjacent cysteine residues. This cytokine displays chemotactic activity for monocytes, lymphocytes, basophils and eosinophils. By recruiting leukocytes to sites of inflammation this cytokine may contribute to tumor-associated leukocyte infiltration and to the antiviral state against HIV infection.

Limitations and Warranty

This antibody is available for research use only and is not approved for use in diagnosis. There are no warranties, expressed or implied, which extend beyond this description. Company is not liable for any personal injury or economic loss resulting from this product.

Supplied As

200ug/ml of Ab purified from Bioreactor Concentrate by Protein A/G. Prepared in 10mM PBS with 0.05% BSA & 0.05% azide. Also available WITHOUT BSA & azide at 1.0mg/ml.

Storage and Stability

Antibody with azide - store at 2 to 8 °C. Antibody without azide - store at -20 to -80 °C. Antibody is stable for 24 months. Non-hazardous. No MSDS required.

Research Areas

AKT Signaling, Cardiovascular