

## Squamous Cell Carcinoma Antigen 1 Antibody

Mouse Monoclonal Antibody [Clone CPTC-SERPINB3-2]

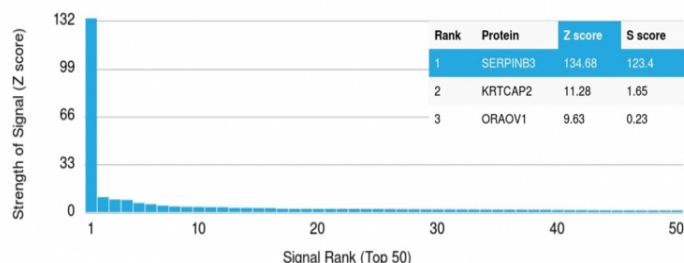
Catalog No	Format	Size
6317-MSM1-P0	Purified Ab with BSA and Azide at 200ug/ml	20 ug
6317-MSM1-P1	Purified Ab with BSA and Azide at 200ug/ml	100 ug
6317-MSM1-P1ABX	Purified Ab WITHOUT BSA and Azide at 1.0mg/ml	100 ug

Applications	Tested Dillution	Note
Western Blot (WB)	2-4ug/ml	

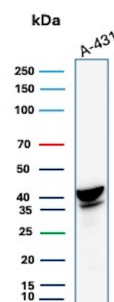
Product Details	
<b>Clone</b>	CPTC-SERPINB3-2
<b>Gene Name</b>	SERPINB3
<b>Immunogen</b>	Recombinant human full-length SERPINB3 protein
<b>Host</b>	Mouse
<b>Clonality</b>	Monoclonal
<b>Isotype / Light Chain</b>	IgG1 / Kappa
<b>Mol. Weight of Antigen</b>	39kDa
<b>Cellular Localization</b>	Cytoplasm
<b>Species Reactivity</b>	Human
<b>Positive Control</b>	A-431, HaCaT, Squamous cells. Expressed in some hepatocellular carcinoma., U-2197

\*Optimal dilution for a specific application should be determined.

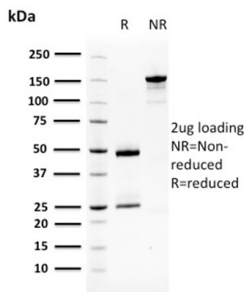
### Product Images for Squamous Cell Carcinoma Antigen 1 Antibody



Analysis of Protein Array containing more than 19,000 full-length human proteins using SqCC Antigen 1 Mouse Monoclonal Antibody (CPTC-SERPINB3-2). Z- and S- Score: The Z-score represents the strength of a signal that a monoclonal antibody (Monoclonal Antibody) (in combination with a fluorescently-tagged anti-IgG secondary antibody) produces when binding to a particular protein on the HuProt™ array. Z-scores are described in units of standard deviations (SD's) above the mean value of all signals generated on that array. If targets on HuProt™ are arranged in descending order of the Z-score, the S-score is the difference (also in units of SD's) between the Z-score. S-score therefore represents the relative target specificity of a Monoclonal Antibody to its intended target. A Monoclonal Antibody is considered to be specific to its intended target, if the Monoclonal Antibody has an S-score of at least 2.5. For example, if a Monoclonal Antibody binds to protein X with a Z-score of 43 and to protein Y with a Z-score of 14, then the S-score for the binding of that Monoclonal Antibody to protein X is equal to 29.



Western Blot Analysis of A-431 lysate using SERPINB3 Mouse Monoclonal Antibody (CPTC-SERPINB3-2).



SDS-PAGE Analysis of Purified SqCC Antigen 1 Mouse Monoclonal Antibody (CPTC-SERPINB3-2). Confirmation of Purity and Integrity of Antibody.

### Specificity & Comments

Metastasis of a primary tumor to a distant site is determined through signaling cascades that break down interactions between the cell and extracellular matrix proteins. Among the proteins mediating metastasis are serine proteases, such as neutrophil elastase. Serpins are family of serine protease inhibitors, contain a stretch of peptide that mimics a true substrate for a corresponding serine protease. Serine proteases bind to this substrate mimic in a 1:1 stoichiometric fashion and become catalytically inactive. Aberrant expression of serpin family members can contribute to a number of conditions, including emphysema (-1 antitrypsin deficiency), fatal bleeding (elastase to Thrombin specificity) and thrombosis (antithrombin deficiency), and are indicators of cancer stage phenotypes (circulating levels of squamous cell carcinoma antigen, known as SCCA1, increase in advancing stages of some cervical, lung, esophageal and head and neck cancers). SCCA1 expression has been demonstrated to promote oncogenic transformation and epithelial-mesenchymal transition (EMT) in mammary epithelial cells, and its silencing in breast cancer cells has been shown to halt their proliferation.

### Limitations and Warranty

This antibody is available for research use only and is not approved for use in diagnosis. There are no warranties, expressed or implied, which extend beyond this description. Company is not liable for any personal injury or economic loss resulting from this product.

### Supplied As

200ug/ml of Ab Purified from Bioreactor Concentrate by Protein A/G. Prepared in 10mM PBS with 0.05% BSA & 0.05% azide. Also available WITHOUT BSA & azide at 1.0mg/ml.

### Storage and Stability

Antibody with azide - store at 2 to 8°C. Antibody without azide - store at -20 to -80°C. Antibody is stable for 24 months. Non-hazardous. No MSDS required.

### Research Areas

Immunology