

Spermidine or Spermine N1-Acetyltransferase 1 Antibody

Mouse Monoclonal Antibody [Clone CPTC-SAT1-3]

Catalog No	Format	Size
6303-MSM1-P0	Purified Ab with BSA and Azide at 200ug/ml	20 ug
6303-MSM1-P1	Purified Ab with BSA and Azide at 200ug/ml	100 ug
6303-MSM1-P1ABX	Purified Ab WITHOUT BSA and Azide at 1.0mg/ml	100 ug

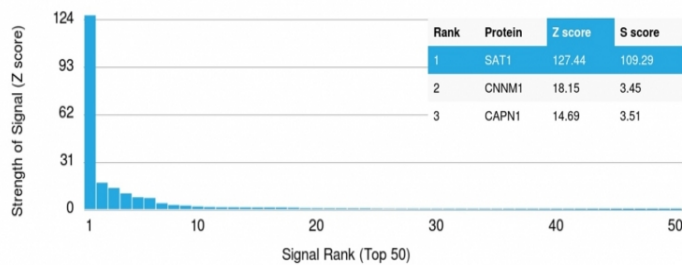
Applications	Tested Dillution	Note

Product Details

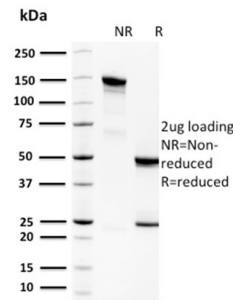
Clone	CPTC-SAT1-3
Gene Name	SAT1
Immunogen	Recombinant full-length human SAT1 protein
Host	Mouse
Clonality	Monoclonal
Isotype / Light Chain	IgG2a / Kappa
Mol. Weight of Antigen	20kDa
Cellular Localization	Cytoplasm, Cytosol
Species Reactivity	Human
Positive Control	Human liver tissue lysate; human tonsil or kidney.

*Optimal dilution for a specific application should be determined.

Product Images for Spermidine or Spermine N1-Acetyltransferase 1 Antibody



Analysis of Protein Array containing more than 19,000 full-length human proteins using Spermidine Monoclonal Antibody (CPTC-SAT1-3). Z- and S- Score: The Z-score represents the strength of a signal that a monoclonal antibody (Monoclonal Antibody) (in combination with a fluorescently-tagged anti-IgG secondary antibody) produces when binding to a particular protein on the HuProt™ array. Z-scores are described in units of standard deviations (SD's) above the mean value of all signals generated on that array. If targets on HuProt™ are arranged in descending order of the Z-score, the S-score is the difference (also in units of SD's) between the Z-score. S-score therefore represents the relative target specificity of a Monoclonal Antibody to its intended target. A Monoclonal Antibody is considered to be specific to its intended target, if the Monoclonal Antibody has an S-score of at least 2.5. For example, if a Monoclonal Antibody binds to protein X with a Z-score of 43 and to protein Y with a Z-score of 14, then the S-score for the binding of that Monoclonal Antibody to protein X is equal to 29.



SDS-PAGE Analysis of Purified Spermidine Monoclonal Antibody (CPTC-SAT1-3). Confirmation of Purity and Integrity of Antibody.

Specificity & Comments

Spermidine/spermine N1-acetyltransferase 1 (SAT1 or SSAT1) is the key regulatory enzyme in the catabolism of polyamines, catalyzing acetylation of spermidine or spermine to generate N1-acetyl spermidine or N1-acetyl spermine, and N1, N12-diacetylspermine. The cellular level of SAT1 is normally extremely low, but it is induced rapidly by a variety of stimuli, including polyamines, polyamine analogs, toxic chemicals, certain drugs, and growth factors. Downregulation of SAT1 has been reported in Epstein-Barr virus positive Burkitt's lymphoma cells.

Limitations and Warranty

This antibody is available for research use only and is not approved for use in diagnosis. There are no warranties, expressed or implied, which extend beyond this description. Company is not liable for any personal injury or economic loss resulting from this product.

Supplied As

200ug/ml of Ab Purified from Bioreactor Concentrate by Protein A/G. Prepared in 10mM PBS with 0.05% BSA & 0.05% azide. Also available WITHOUT BSA & azide at 1.0mg/ml.

Storage and Stability

Antibody with azide - store at 2 to 8°C. Antibody without azide - store at -20 to -80°C. Antibody is stable for 24 months. Non-hazardous. No MSDS required.
