

## Recombinant Serum amyloid A-1 protein / SAA1 Antibody

Rabbit Monoclonal Antibody [Clone SAA/2868R]

| Catalog No      | Format                                       | Size   |
|-----------------|--|--------|
| 6288-RBM3-P0    | Purified Ab with BSA and Azide at 200ug/ml   | 20 ug  |
| 6288-RBM3-P1    | Purified Ab with BSA and Azide at 200ug/ml   | 100 ug |
| 6288-RBM3-P1ABX | Purified Ab WITHOUT BSA or Azide at 1.0mg/ml | 100 ug |

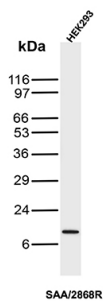
| Applications               | Tested Dillution | Note  |
|----------------------------|------------------|---|
| Immunohistochemistry (IHC) | 1-2ug/ml         | 30 min at RT. Staining of formalin-fixed tissues requires heating tissue sections in 10mM Tris with 1mM EDTA, pH 9.0, for 45 min at 95°C followed by cooling at RT for 20 minutes |
| Western Blot (WB)          | 2-4ug/ml         |   |

### Product Details

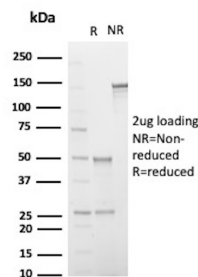
|                               |   |
|-------------------------------|---|
| <b>Clone</b>                  | SAA/2868R   |
| <b>Immunogen</b>              | Recombinant full-length human Serum Amyloid A protein |
| <b>Host</b>                   | Rabbit  |
| <b>Clonality</b>              | Monoclonal  |
| <b>Isotype / Light Chain</b>  | IgG / Kappa   |
| <b>Mol. Weight of Antigen</b> | 13.55kDa  |
| <b>Cellular Localization</b>  | Secreted  |
| <b>Species Reactivity</b>     | Human   |
| <b>Positive Control</b>       | Caki-1 cells. Pancreas or Liver, HEK293               |

\*Optimal dilution for a specific application should be determined.

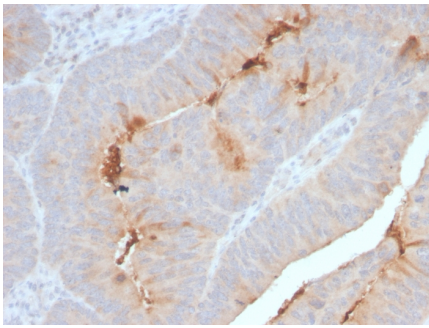
### Product Images for Recombinant Serum amyloid A-1 protein / SAA1 Antibody



Western Blot Analysis of HEK293 cell lysate using Serum Amyloid A Recombinant Rabbit Monoclonal Antibody (SAA/2868R).



SDS-PAGE Analysis of Purified Serum Amyloid A Recombinant Rabbit Monoclonal Antibody (SAA/2868R). Confirmation of Purity and Integrity of Antibody.



Formalin-fixed, paraffin-embedded human Colon Carcinoma stained with Serum Amyloid A Recombinant Rabbit Monoclonal Antibody (SAA/2868R).

---

### Specificity & Comments

This antibody reacts with natural and recombinant human Serum Amyloid A (SAA) and does not cross-react with other human cytokines or growth factors. Human SAA proteins are a group of apolipoproteins found predominantly in the high-density lipoprotein (HDL) fraction of plasma. SAA is a major acute-phase protein and precursor to amyloid A protein, which is the major constituent of the fibril deposits of reactive amyloidosis. SAA is secreted in large amounts by the liver during microbial infections or inflammatory diseases.

---

### Limitations and Warranty

This antibody is available for research use only and is not approved for use in diagnosis. There are no warranties, expressed or implied, which extend beyond this description. Company is not liable for any personal injury or economic loss resulting from this product.

---

### Supplied As

200ug/ml of Ab produced in a mammalian-based expression system. Prepared in 10mM PBS with 0.05% BSA & 0.05% azide. Also available WITHOUT BSA & azide at 1.0mg/ml.

---

### Storage and Stability

Antibody with azide - store at 2 to 8 °C. Antibody without azide - store at -20 to -80 °C. Antibody is stable for 24 months. Non-hazardous. No MSDS required.

---