

## Recombinant S100B (Astrocyte and Melanoma Marker) Antibody

Rabbit Monoclonal Antibody [Clone S100B/1706R]

Catalog No	Format	Size
6285-RBM4-P0	Purified Ab with BSA and Azide at 200ug/ml	20 ug
6285-RBM4-P1	Purified Ab with BSA and Azide at 200ug/ml	100 ug
6285-RBM4-P1ABX	Purified Ab WITHOUT BSA or Azide at 1.0mg/ml	100 ug

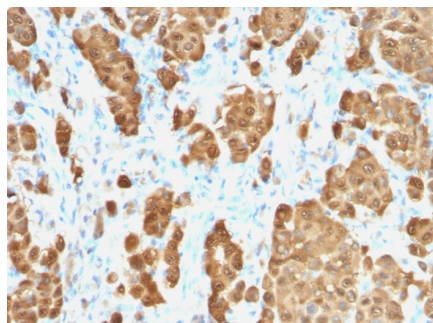
Applications	Tested Dillution	Note
Immunohistochemistry (IHC)	1-2ug/ml	30 min at RT. Staining of formalin-fixed tissues requires heating tissue sections in 10mM Tris with 1mM EDTA, pH 9.0, for 45 min at 95°C followed by cooling at RT for 20 minutes
Western Blot (WB)	2-4ug/ml	

### Product Details

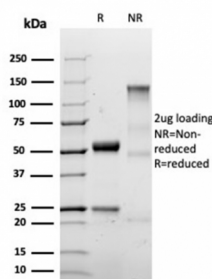
<b>Clone</b>	S100B/1706R
<b>Immunogen</b>	Recombinant full-length bovine S100B protein
<b>Host</b>	Rabbit
<b>Clonality</b>	Monoclonal
<b>Isotype / Light Chain</b>	IgG / Kappa
<b>Mol. Weight of Antigen</b>	10.71kDa
<b>Cellular Localization</b>	Cytoplasm, Nucleus, Secreted
<b>Species Reactivity</b>	Human
<b>Positive Control</b>	Human brain or melanoma. A375.

\*Optimal dilution for a specific application should be determined.

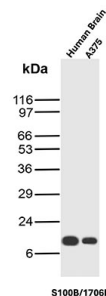
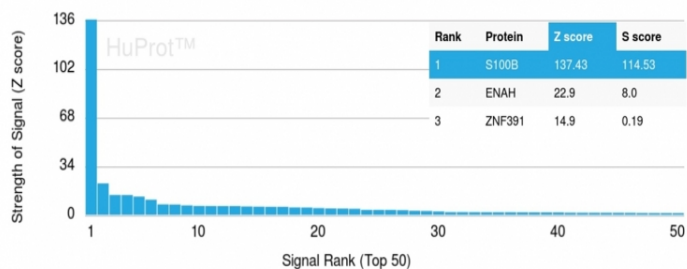
### Product Images for Recombinant S100B (Astrocyte and Melanoma Marker) Antibody



Formalin-fixed, paraffin-embedded human melanoma stained with S100B Recombinant Rabbit Monoclonal Antibody (S100B/1706R).

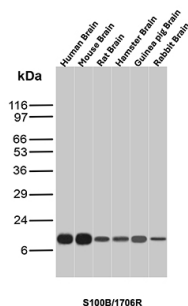


SDS-PAGE Analysis Purified S100B Recombinant Rabbit Monoclonal Antibody (S100B/1706R). Confirmation of Purity and Integrity of Antibody.

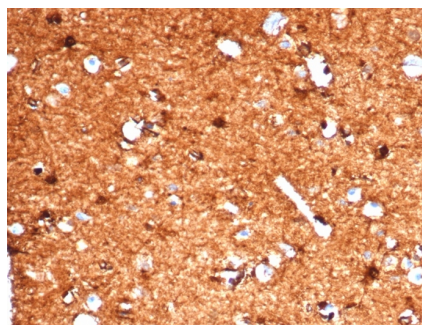


Western Blot analysis of Human Brain Tissue and A375 lysates using S100B Recombinant Rabbit Monoclonal Antibody (S100B/1706R).

Analysis of Protein Array containing more than 19,000 full-length human proteins using S100B-Monospecific Recombinant Rabbit Monoclonal Antibody (S100B/1706R) Z- and S- Score: The Z-score represents the strength of a signal that a monoclonal antibody (MAb) (in combination with a fluorescently-tagged anti-IgG secondary antibody) produces when binding to a particular protein on the HuProt™ array. Z-scores are described in units of standard deviations (SD's) above the mean value of all signals generated on that array. If targets on HuProt™ are arranged in descending order of the Z-score, the S-score is the difference (also in units of SD's) between the Z-score. S-score therefore represents the relative target specificity of a MAb to its intended target. A MAb is considered to be specific to its intended target, if the MAb has an S-score of at least 2.5. For example, if a MAb binds to protein X with a Z-score of 43 and to protein Y with a Z-score of 14, then the S-score for the binding of that MAb to protein X is equal to 29.



Western Blot Analysis of Human Brain, Mouse Brain, Rat Brain, Hamster Brain, Guinea pig Brain and Rabbit Brain tissue lysates using S100B Recombinant Rabbit Monoclonal Antibody (S100B/1706R).



Formalin-fixed, paraffin-embedded human brain stained with S100B Recombinant Rabbit Monoclonal Antibody (S100B/1706R).

## Specificity & Comments

S100 belongs to the family of calcium binding proteins. S100A and S100B proteins are two members of the S100 family. S100A is composed of an alpha and a beta chain whereas S100B is composed of two beta chains. This antibody is specific against an epitope located on the beta-chain (i.e. in S-100A and S-100B) but not on the alpha-chain of S-100 (i.e. in S-100A and S100A0). This antibody can be used to localize S-100A and S-100B in various tissue sections. S-100 protein has been found in normal melanocytes, Langerhans cells, histiocytes, chondrocytes, lipocytes, skeletal and cardiac muscle, Schwann cells, epithelial and myoepithelial cells of the breast, salivary and sweat glands, as well as in glial cells. Neoplasms derived from these cells also express S-100 protein, albeit non-uniformly. A large number of well-differentiated tumors of the salivary gland, adipose and cartilaginous tissue, and Schwann cell-derived tumors express S-100 protein. Almost all malignant melanomas and cases of histiocytosis X are positive for S-100 protein.

## Limitations and Warranty

This antibody is available for research use only and is not approved for use in diagnosis. There are no warranties, expressed or implied, which extend beyond this description. Company is not liable for any personal injury or economic loss resulting from this product.

## Supplied As

200ug/ml of Ab produced in a mammalian-based expression system. Prepared in 10mM PBS with 0.05% BSA & 0.05% azide. Also available WITHOUT BSA & azide at 1.0mg/ml.

## Storage and Stability

Antibody with azide - store at 2 to 8 °C. Antibody without azide - store at -20 to -80 °C. Antibody is stable for 24 months. Non-hazardous. No MSDS required.