

Recombinant S100A4 / Metastasin / Calvasculin (Marker of Tumor Metastasis) Antibody

Mouse Monoclonal Antibody [Clone rS100A4/1481]

Catalog No	Format	Size
6275-MSM5-P0	Purified Ab with BSA and Azide at 200ug/ml	20 ug
6275-MSM5-P1	Purified Ab with BSA and Azide at 200ug/ml	100 ug
6275-MSM5-P1ABX	Purified Ab WITHOUT BSA and Azide at 1.0mg/ml	100 ug

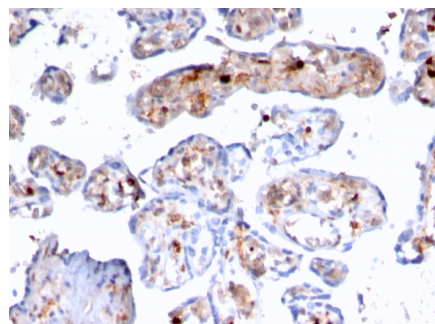
Applications	Tested Dillution	Note
Flow Cytometry (Flow)	1-2ug/million cells	
Immunofluorescence (IF)	1-3ug/ml	
Immunohistochemistry (IHC)	1-2ug/ml	30 min at RT. Staining of formalin-fixed tissues requires heating tissue sections in 10mM Tris with 1mM EDTA, pH 9.0, for 45 min at 95°C followed by cooling at RT for 20 minutes
Western Blot (WB)	2-4ug/ml	

Product Details

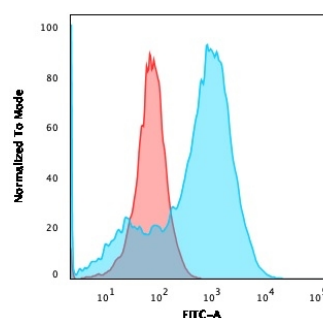
Clone	rS100A4/1481
Gene Name	S100A4
Immunogen	Recombinant fragment (around aa 1-200) of human S100A4 protein (exact sequence is proprietary)
Host	Mouse
Clonality	Monoclonal
Isotype / Light Chain	IgG1 / Kappa
Mol. Weight of Antigen	10-12kDa
Cellular Localization	Cytoplasm, Nucleus, Secreted
Species Reactivity	Human, Mouse
Positive Control	A549 or A375 cells (IF/FACS). HeLa (WB). Human placenta tissue (IHC).Heart, Lung, Spleen.

**Optimal dilution for a specific application should be determined.*

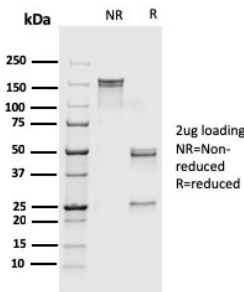
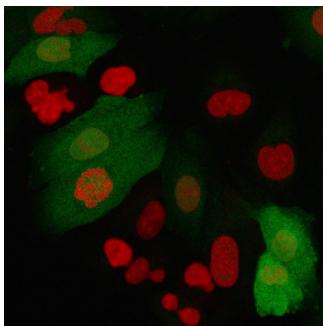
Product Images for Recombinant S100A4 / Metastasin / Calvasculin (Marker of Tumor Metastasis) Antibody



Formalin-fixed, paraffin-embedded human Placenta stained with S100A4 Recombinant Mouse Monoclonal Antibody (rS100A4/1481).

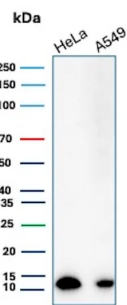
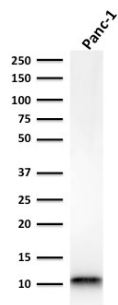


Flow Cytometric Analysis of A549 cells using S100A4 Recombinant Mouse Monoclonal Antibody (rS100A4/1481) followed by goat anti-Mouse IgG-CF488 (Blue); Isotype Control (Red).



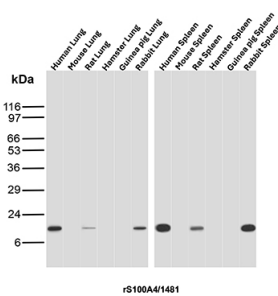
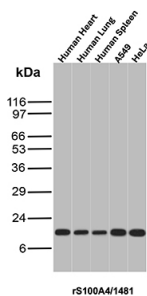
Immunofluorescence staining of A549 cells using S100A4 Recombinant Mouse Monoclonal Antibody (rS100A4/1481) followed by goat anti-Mouse IgG conjugated to CF488 (green). Nuclei are stained with Reddot.

SDS-PAGE Analysis Purified S100A4 Recombinant Mouse Monoclonal Antibody (rS100A4/1481). Confirmation of Purity and Integrity of Antibody.



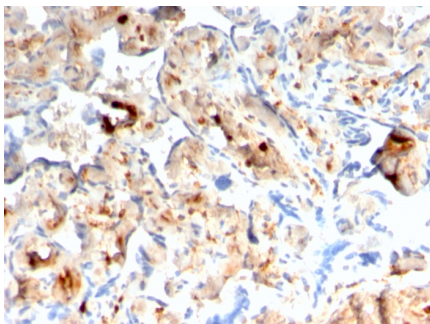
Western Blot Analysis of Panc-1 cell lysate using S100A4 Recombinant Mouse Monoclonal Antibody (rS100A4/1481).

Western Blot Analysis of HeLa and A549 lysates using S100A4 Recombinant Mouse Monoclonal Antibody (rS100A4/1481).



Western Blot Analysis of Human Heart, Human Lung, Human Spleen, A549, and HeLa lysates using S100A4 Recombinant Mouse Monoclonal Antibody (rS100A4/1481).

Western Blot Analysis of Lung and Spleen tissue lysates of different species using S100A4 Recombinant Mouse Monoclonal Antibody (rS100A4/1481).



Formalin-fixed, paraffin-embedded human Placenta stained with S100A4 Recombinant Mouse Monoclonal Antibody (rS100A4/1481).

Specificity & Comments

S100A4 belongs to the S100 super-family of proteins containing 2 EF-hand calcium-binding domains. S100 genes include at least 25 members, including S100A1-S100A18, trichohyalin, filaggrin, repetin, S100P, and S100Z. S100A4 exerts its function via direct interaction with a number of proteins including P53, P63, non-muscle myosin IIA, $\alpha 6$ integrin, and liprin b1. S100A4 is overexpressed in highly metastatic cancers, which makes it useful as a marker of tumor progression.

Limitations and Warranty

This antibody is available for research use only and is not approved for use in diagnosis. There are no warranties, expressed or implied, which extend beyond this description. Company is not liable for any personal injury or economic loss resulting from this product.

Supplied As

200ug/ml of Ab produced in HEK293 cell mammalian-based expression system. Prepared in 10mM PBS with 0.05% BSA & 0.05% azide. Also available WITHOUT BSA & azide at 1.0mg/ml.

Storage and Stability

Antibody with azide - store at 2 to 8°C. Antibody without azide - store at -20 to -80°C. Antibody is stable for 24 months. Non-hazardous. No MSDS required.

Research Areas

Dendritic Cell Marker
