

## S100A1 (Melanoma Marker) Antibody

Mouse Monoclonal Antibody [Clone S1/61]

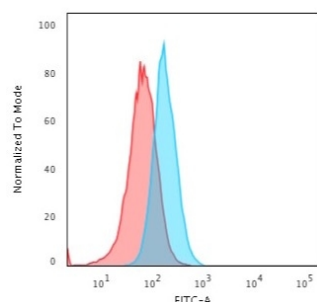
Catalog No	Format	Size
6271-MSM1-P0	Purified Ab with BSA and Azide	200ug/ml
6271-MSM1-P1	Purified Ab with BSA and Azide	200ug/ml
6271-MSM1-P1ABX	Purified Ab WITHOUT BSA and Azide	1.0mg/ml

Applications	Tested Dillution
Immunofluorescence (IF)	1-3ug/ml

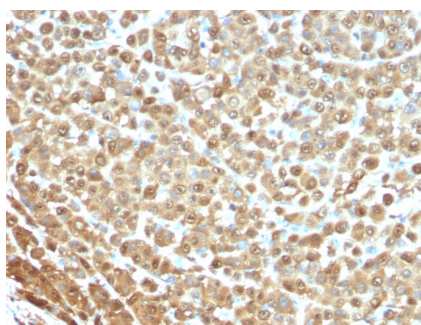
Product Details	
Clone	S1/61
Gene Name	S100A1
Immunogen	Purified human full-length native S-100 protein conjugated to methylated BSA
Host	Mouse
Clonality	Monoclonal
Isotype / Light Chain	IgG1 / Kappa
Mol. Weight of Antigen	10-12kDa
Cellular Localization	Cytoplasm, Mitochondrion, Sarcoplasmic reticulum
Species Reactivity	Human
Positive Control	T98G or A431 or HT-29 Cells. Brain or Melanoma

*\*Optimal dilution for a specific application should be determined.*

### Product Images for S100A1 (Melanoma Marker) Antibody



Flow Cytometric Analysis of T98G Cells. using S100A1 Mouse Monoclonal Antibody (S1/61) followed by Goat anti-mouse IgG-CF488 (Blue); Isotype Control (Red).



Formalin-fixed, paraffin-embedded human Melanoma stained with S100A1 Mouse Monoclonal Antibody (S1/61)

### Specificity & Comments

S100 belongs to the family of calcium binding proteins. S100A and S100B proteins are two members of the S100 family. S100A is composed of an alpha and a beta chain whereas S100B is composed of two beta chains. This antibody is specific against an epitope located on the alpha-chain (i.e. in S-100A and S-100B) but not on the beta-chain of S-100 (i.e. in S-100B). This antibody can be used to localize S-100A in various tissue sections. S-100 protein has been found in normal melanocytes, Langerhans cells, histiocytes, chondrocytes, lipocytes, skeletal and cardiac muscle, epithelial and myoepithelial cells of the breast, salivary and sweat glands. Neoplasms derived from these cells also express S-100 protein. Almost all malignant melanomas and cases of histiocytosis X are positive for S-100 protein.

### Research Areas

Immunology, Infectious Disease

### Known Applications & Suggested Dilutions

Immunofluorescence (1-2ug/ml) | Immunohistology (Formalin-fixed) (1-2ug/ml for 30 minutes at RT), (Staining of formalin-fixed tissues requires boiling tissue sections in 10mM citrate buffer, pH 6.0, for 10-20 min followed by cooling at RT for 20 minutes), Optimal dilution for a specific application should be determined.

### Limitations and Warranty

This antibody is available for research use only and is not approved for use in diagnosis.

There are no warranties, expressed or implied, which extend beyond this description. Company is not liable for any personal injury or economic loss resulting from this product.

### Supplied As

200ug/ml of Ab purified from Bioreactor Concentrate by Protein A/G. Prepared in 10mM PBS with 0.05% BSA & 0.05% azide. Also available WITHOUT BSA & azide at 1.0mg/ml.

### Storage and Stability

Antibody with azide - store at 2 to 8 °C. Antibody without azide - store at -20 to -80 °C. Antibody is stable for 24 months. Non-hazardous. No MSDS required.