

## Bcl-6 (Follicular Lymphoma Marker) Antibody

Mouse Monoclonal Antibody [Clone BCL6/1526]

| Catalog No     | Format  | Size   |
|----------------|---|--------|
| 604-MSM6-P0    | Purified Ab with BSA and Azide at 200ug/ml    | 20 ug  |
| 604-MSM6-P1    | Purified Ab with BSA and Azide at 200ug/ml    | 100 ug |
| 604-MSM6-P1ABX | Purified Ab WITHOUT BSA and Azide at 1.0mg/ml | 100 ug |

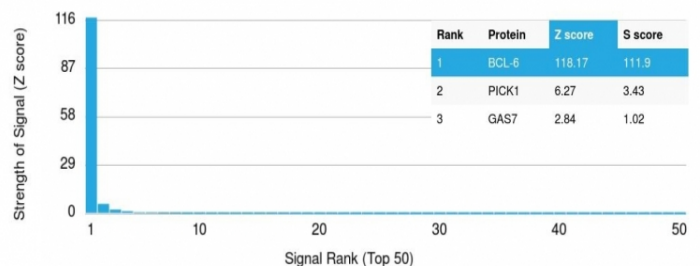
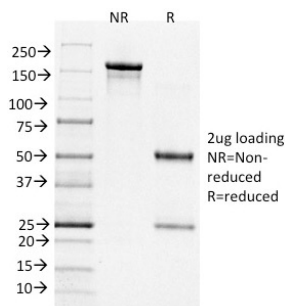
| Applications               | Tested Dillution | Note  |
|----------------------------|------------------|---|
| Immunohistochemistry (IHC) | 1-2ug/ml         | 30 min at RT. Staining of formalin-fixed tissues requires heating tissue sections in 10mM Tris with 1mM EDTA, pH 9.0, for 45 min at 95°C followed by cooling at RT for 20 minutes |

### Product Details

|                               |  |
|-------------------------------|--|
| <b>Clone</b>                  | BCL6/1526  |
| <b>Gene Name</b>              | BCL6   |
| <b>Immunogen</b>              | Recombinant human bcl-6 protein fragment (aa256-389) (Exact sequence is proprietary) |
| <b>Host</b>                   | Mouse  |
| <b>Clonality</b>              | Monoclonal   |
| <b>Isotype / Light Chain</b>  | IgG1 / Kappa   |
| <b>Mol. Weight of Antigen</b> | 95kDa  |
| <b>Cellular Localization</b>  | Nucleus  |
| <b>Species Reactivity</b>     | Human  |
| <b>Positive Control</b>       | Raji or Ramos cells. Tonsil or Hodgkin's lymphoma.                                   |

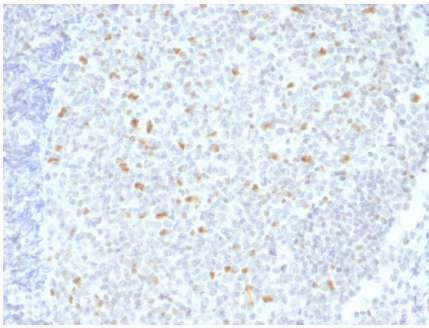
\*Optimal dilution for a specific application should be determined.

### Product Images for Bcl-6 (Follicular Lymphoma Marker) Antibody



SDS-PAGE Analysis of Purified BCL-6 Mouse Monoclonal Antibody (BCL6/1526). Confirmation of Integrity and Purity of Antibody.

Analysis of Protein Array containing >19,000 full-length human proteins using Bcl-6 Mouse Monoclonal Antibody (BCL6/1526) Z- and S- Score: The Z-score represents the strength of a signal that a monoclonal antibody (Monoclonal Antibody) (in combination with a fluorescently-tagged anti-IgG secondary antibody) produces when binding to a particular protein on the HuProt™ array. Z-scores are described in units of standard deviations (SD's) above the mean value of all signals generated on that array. If targets on HuProt™ are arranged in descending order of the Z-score, the S-score is the difference (also in units of SD's) between the Z-score. S-score therefore represents the relative target specificity of a Monoclonal Antibody to its intended target. A Monoclonal Antibody is considered to specific to its intended target, if the Monoclonal Antibody has an S-score of at least 2.5. For example, if a Monoclonal Antibody binds to protein X with a Z-score of 43 and to protein Y with a Z-score of 14, then the S-score for the binding of that Monoclonal Antibody to protein X is equal to 29.



Formalin-fixed, paraffin-embedded human Hodgkin's Lymphoma stained with BCL-6 Mouse Monoclonal Antibody (BCL6/1526).

### Specificity & Comments

Recognizes a protein of 95kDa, which is identified as Bcl-6. Antibody to bcl-6 is helpful in a number of diagnostic settings: (1) In the differential diagnosis of small B-cell lymphoma. Follicular lymphoma will show bcl-6 (and CD10) positivity whereas other small B-cell lymphomas are usually negative. (2) Bcl-6 is an important prognostic marker in diffuse large B-cell lymphomas (DLBCL), where CD10, bcl-6 and MUM1/IRF4 are used to identify germinal center and activated B-cell phenotypes. (3) Bcl-6 can be valuable in distinguishing classical Hodgkin lymphoma from nodular lymphocyte predominant Hodgkin lymphoma (NLPHL). The Reed-Sternberg cells of classical Hodgkin lymphoma are bcl-6 negative whereas the large ('LH') cells of NLPHL are bcl-6 positive. In contrast, anti-Bcl-6 rarely stains mantle-cell lymphoma and MALT lymphoma.

### Limitations and Warranty

This antibody is available for research use only and is not approved for use in diagnosis. There are no warranties, expressed or implied, which extend beyond this description. Company is not liable for any personal injury or economic loss resulting from this product.

### Supplied As

200ug/ml of Ab Purified from Bioreactor Concentrate by Protein A/G. Prepared in 10mM PBS with 0.05% BSA & 0.05% azide. Also available WITHOUT BSA & azide at 1.0mg/ml.

### Storage and Stability

Antibody with azide - store at 2 to 8°C. Antibody without azide - store at -20 to -80°C. Antibody is stable for 24 months. Non-hazardous. No MSDS required.

### Research Areas

Cancer, Cardiovascular, Cytokine Signaling, Immunology, Nuclear Marker, Transcription Factors