

Bcl-6 (Follicular Lymphoma Marker) Antibody

Mouse Monoclonal Antibody [Clone BCL6/1475]

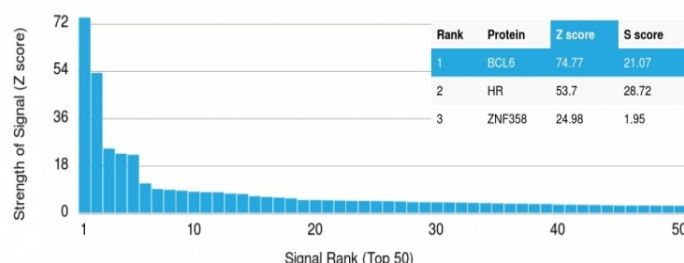
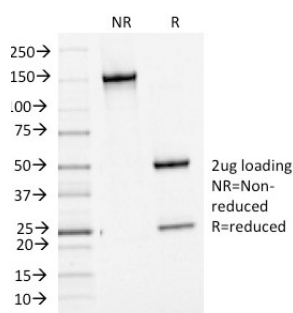
Catalog No	Format	Size
604-MSM5-P0	Purified Ab with BSA and Azide	200ug/ml
604-MSM5-P1	Purified Ab with BSA and Azide	200ug/ml
604-MSM5-P1ABX	Purified Ab WITHOUT BSA and Azide	1.0mg/ml

Applications	Tested Dillution
Western Blot (WB)	2-4ug/ml

Product Details	
Clone	BCL6/1475
Gene Name	BCL6
Immunogen	Recombinant human bcl-6 protein fragment (around aa256-389) (exact sequence is proprietary)
Host	Mouse
Clonality	Monoclonal
Isotype / Light Chain	IgG1 / Kappa
Mol. Weight of Antigen	95kDa
Cellular Localization	Nucleus
Species Reactivity	Human
Positive Control	Raji or Ramos cells. Tonsil.

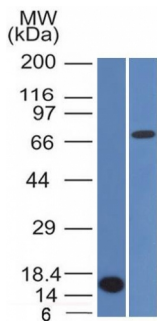
*Optimal dilution for a specific application should be determined.

Product Images for Bcl-6 (Follicular Lymphoma Marker) Antibody



SDS-PAGE Analysis of Purified bcl-6 Mouse Monoclonal Antibody(BCL6/1475). Confirmation of Purity and Integrity of Antibody.

Analysis of Protein Array containing more than 19,000 full-length human proteins using bcl-6 Mouse Monoclonal Antibody (BCL6/1475). Z- and S- Score: The Z-score represents the strength of a signal that a monoclonal antibody (Monoclonal Antibody) (in combination with a fluorescently-tagged anti-IgG secondary antibody) produces when binding to a particular protein on the HuProtTM array. Z-scores are described in units of standard deviations (SD's) above the mean value of all signals generated on that array. If targets on HuProtTM are arranged in descending order of the Z-score, the S-score is the difference (also in units of SD's) between the Z-score. S-score therefore represents the relative target specificity of a Monoclonal Antibody to its intended target. A Monoclonal Antibody is considered to be specific to its intended target, if the Monoclonal Antibody has an S-score of at least 2.5. For example, if a Monoclonal Antibody binds to protein X with a Z-score of 43 and to protein Y with a Z-score of 14, then the S-score for the binding of that Monoclonal Antibody to protein X is equal to 29.



Western Blot Analysis (A) Recombinant Protein (B) HepG2 cell lysate bcl-6 Mouse Monoclonal Antibody (BCL6/1475).

Specificity & Comments

The specificity of this monoclonal antibody to its intended target was validated by HuProt™ Array, containing more than 19,000, full-length human proteins. Recognizes a protein of 95kDa, which is identified as Bcl-6. Antibody to bcl-6 is helpful in a number of diagnostic settings: (1) In the differential diagnosis of small B-cell lymphoma. Follicular lymphoma will show bcl-6 (and CD10) positivity whereas other small B-cell lymphomas are usually negative. (2) Bcl-6 is an important prognostic marker in diffuse large B-cell lymphomas (DLBCL), where CD10, bcl-6 and MUM1/IRF4 are used to identify germinal center and activated B-cell phenotypes. (3) Bcl-6 can be valuable in distinguishing classical Hodgkin lymphoma from nodular lymphocyte predominant Hodgkin lymphoma (NLPHL). The Reed-Sternberg cells of classical Hodgkin lymphoma are bcl-6 negative whereas the large ('LH') cells of NLPHL are bcl-6 positive. In contrast, anti-Bcl-6 rarely stains mantle-cell lymphoma and MALT lymphoma.

Research Areas

Cancer, Cardiovascular, Immunology, Cytokine Signaling, Nuclear Marker, Transcription Factors

Known Applications & Suggested Dilutions

Western Blot (1-2ug/ml) | Optimal dilution for a specific application should be determined.

Limitations and Warranty

This antibody is available for research use only and is not approved for use in diagnosis.

There are no warranties, expressed or implied, which extend beyond this description. Company is not liable for any personal injury or economic loss resulting from this product.

Supplied As

200ug/ml of Ab Purified from Bioreactor Concentrate by Protein A/G. Prepared in 10mM PBS with 0.05% BSA & 0.05% azide. Also available WITHOUT BSA & azide at 1.0mg/ml.

Storage and Stability

Antibody with azide - store at 2 to 8°C. Antibody without azide - store at -20 to -80°C. Antibody is stable for 24 months. Non-hazardous. No MSDS required.