

BCL6 Antibody

Mouse Monoclonal Antibody [Clone PCR-P-BCL6-1E2]

Catalog No	Format	Size
604-MSM19-P0	Purified Ab with BSA and Azide at 200ug/ml	20 ug
604-MSM19-P1	Purified Ab with BSA and Azide at 200ug/ml	100 ug
604-MSM19-P1ABX	Purified Ab WITHOUT BSA and Azide at 1.0mg/ml	100 ug

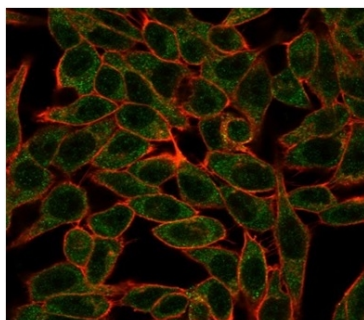
Applications	Tested Dilution	Note
Flow Cytometry (Flow)	1-2ug/million cells	
Immunofluorescence (IF)	1-3ug/ml	

Product Details

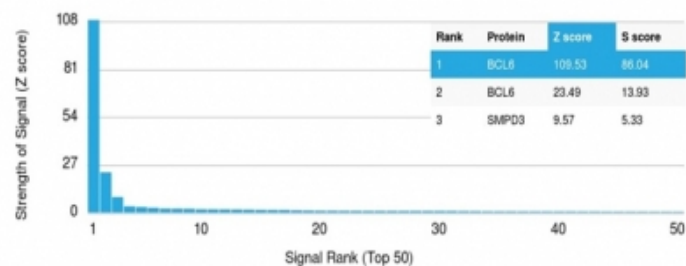
Clone	PCR-P-BCL6-1E2
Gene Name	BCL6
Immunogen	Recombinant full-length human BCL6 protein
Host	Mouse
Clonality	Monoclonal
Isotype / Light Chain	IgG2b / Kappa
Mol. Weight of Antigen	95kDa
Cellular Localization	Nucleus
Species Reactivity	Human
Positive Control	HeLa or MCF-7 cells.

*Optimal dilution for a specific application should be determined.

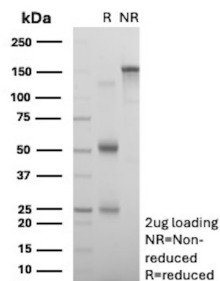
Product Images for BCL6 Antibody



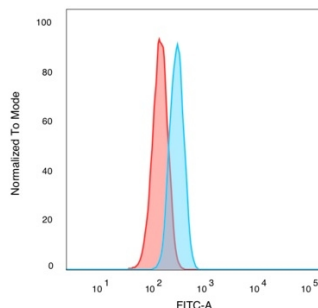
Immunofluorescence Analysis of MCF-7 cells using BCL6 Mouse Monoclonal Antibody (PCR-P-BCL6-1E2) followed by goat anti-mouse IgG-CF488 (green). CF640A phalloidin (red)



Immunofluorescence Analysis of MCF-7 cells using BCL6 Mouse Monoclonal Antibody (PCR-P-BCL6-1E2) followed by goat anti-mouse IgG-CF488 (green). CF640A phalloidin (red)



SDS-PAGE Analysis of Purified bcl-6 Mouse Monoclonal Antibody (PCRPBCL6-1E2). Confirmation of Purity and Integrity of Antibody.



Flow Cytometric Analysis of PFA-fixed HeLacells. BCL6 Mouse Monoclonal Antibody (PCRP-BCL6-1E2) followed by goat anti-mouse IgG-CF488 (blue); unstained cells (red).

Specificity & Comments

Bcl-6 is an important prognostic marker in diffuse large B-cell lymphomas (DLBCL), where CD10, bcl-6 and MUM1/IRF4 are used to identify germinal center and activated B-cell phenotypes. Bcl-6 can be valuable in distinguishing classical Hodgkin lymphoma from nodular lymphocyte predominant Hodgkin lymphoma (NLPHL). The Reed-Sternberg cells of classical Hodgkin lymphoma are bcl-6 negative whereas the large (L&H) cells of NLPHL are bcl-6 positive. In contrast, anti-Bcl-6 rarely stains mantle-cell lymphoma and MALT lymphoma.

Supplied As

200ug/ml of Ab purified from Bioreactor Concentrate by Protein A/G. Prepared in 10mM PBS with 0.05% BSA & 0.05% azide. Also available WITHOUT BSA & azide at 1.0mg/ml.

Storage and Stability

Antibody with azide - store at 2 to 8 °C. Antibody without azide - store at -20 to -80 °C. Antibody is stable for 24 months. Non-hazardous. No MSDS required.

Research Areas

Cardiovascular, Cytokine Signaling, Immunology, Nuclear Marker, Transcription Factors

Limitations and Warranty

This antibody is available for research use only and is not approved for use in diagnosis. There are no warranties, expressed or implied, which extend beyond this description. Company is not liable for any personal injury or economic loss resulting from this product.