

Recombinant Bcl-6 (Follicular Lymphoma Marker) Antibody

Mouse Monoclonal Antibody [Clone rBCL6/1718]

Catalog No	Format	Size
604-MSM14-P0	Purified Ab with BSA and Azide at 200ug/ml	20 ug
604-MSM14-P1	Purified Ab with BSA and Azide at 200ug/ml	100 ug
604-MSM14-P1ABX	Purified Ab WITHOUT BSA or Azide at 1.0mg/ml	100 ug

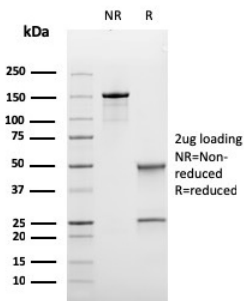
Applications	Tested Dillution	Note
Immunohistochemistry (IHC)	1-2ug/ml	30 min at RT. Staining of formalin-fixed tissues requires heating tissue sections in 10mM Tris with 1mM EDTA, pH 9.0, for 45 min at 95°C followed by cooling at RT for 20 minutes
Western Blot (WB)	2-4ug/ml	

Product Details

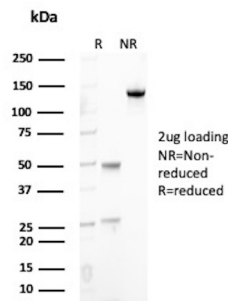
Clone	rBCL6/1718
Immunogen	Recombinant fragment (around aa256-389) of the human bcl-6 protein (exact sequence is proprietary)
Host	Mouse
Clonality	Monoclonal
Isotype / Light Chain	IgG1 / Kappa
Mol. Weight of Antigen	78.85kDa
Cellular Localization	Nucleus
Species Reactivity	Human
Positive Control	Raji or Ramos cells. Tonsil or Hodgkin's lymphoma.

*Optimal dilution for a specific application should be determined.

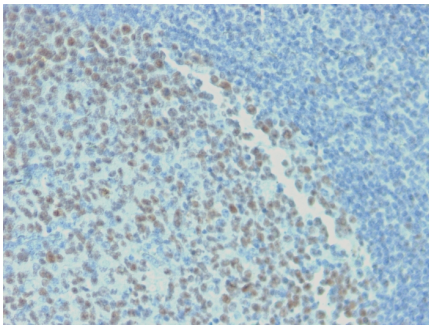
Product Images for Recombinant Bcl-6 (Follicular Lymphoma Marker) Antibody



SDS-PAGE Analysis of Purified BCL-6 Mouse Recombinant Monoclonal Antibody (rBCL6/1718). Confirmation of Integrity and Purity of Antibody.



SDS-PAGE Analysis of Purified B-cell lymphoma 6 protein Recombinant Mouse Monoclonal Antibody (rBCL6/1718). Confirmation of Purity and Integrity of Antibody.



Formalin-fixed, paraffin-embedded human Tonsil stained with BCL-6 Mouse Recombinant Monoclonal Antibody (rBCL6/1718).

Specificity & Comments

Recognizes a protein of 95kDa, which is identified as Bcl-6. Antibody to bcl-6 is helpful in a number of diagnostic settings: (1) In the differential diagnosis of small B-cell lymphoma. Follicular lymphoma will show bcl-6 (and CD10) positivity whereas other small B-cell lymphomas are usually negative. (2) Bcl-6 is an important prognostic marker in diffuse large B-cell lymphomas (DLBCL), where CD10, bcl-6 and MUM1/IRF4 are used to identify germinal center and activated B-cell phenotypes. (3) Bcl-6 can be valuable in distinguishing classical Hodgkin lymphoma from nodular lymphocyte predominant Hodgkin lymphoma (NLPHL). The Reed-Sternberg cells of classical Hodgkin lymphoma are bcl-6 negative whereas the large ('LH') cells of NLPHL are bcl-6 positive. In contrast, anti-Bcl-6 rarely stains mantle-cell lymphoma and MALT lymphoma.

Limitations and Warranty

This antibody is available for research use only and is not approved for use in diagnosis. There are no warranties, expressed or implied, which extend beyond this description. Company is not liable for any personal injury or economic loss resulting from this product.

Supplied As

200ug/ml of Ab produced in a mammalian-based expression system. Prepared in 10mM PBS with 0.05% BSA & 0.05% azide. Also available WITHOUT BSA & azide at 1.0mg/ml.

Storage and Stability

Antibody with azide - store at 2 to 8 °C. Antibody without azide - store at -20 to -80 °C. Antibody is stable for 24 months. Non-hazardous. No MSDS required.