

BCL2-like 2 Antibody

Mouse Monoclonal Antibody [Clone CPTC-BCL2L2-2]

Catalog No	Format	Size
599-MSM1-P0	Purified Ab with BSA and Azide at 200ug/ml	20 ug
599-MSM1-P1	Purified Ab with BSA and Azide at 200ug/ml	100 ug
599-MSM1-P1ABX	Purified Ab WITHOUT BSA and Azide at 1.0mg/ml	100 ug

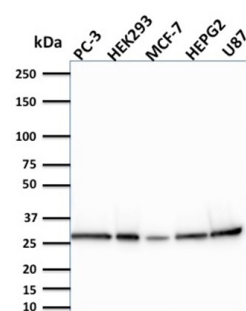
Applications	Tested Dillution	Note
Western Blot (WB)	2-4ug/ml	

Product Details

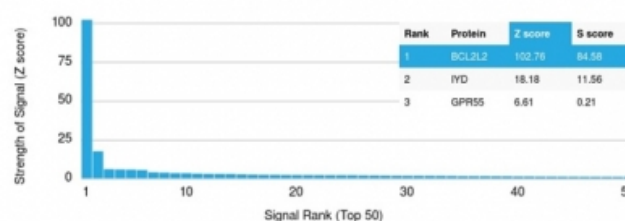
Clone	CPTC-BCL2L2-2
Gene Name	BCL2L2
Immunogen	Recombinant human full-length BCL2L2 protein
Host	Mouse
Clonality	Monoclonal
Isotype / Light Chain	IgG1
Mol. Weight of Antigen	22-30kDa
Cellular Localization	Mitochondrion membrane
Species Reactivity	Human
Positive Control	A-431, FaDu, HEK293, Hep G2, MCF7 or U87 cells., PC-3

*Optimal dilution for a specific application should be determined.

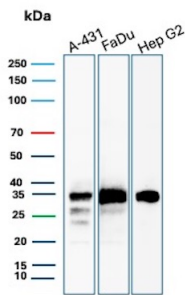
Product Images for BCL2-like 2 Antibody



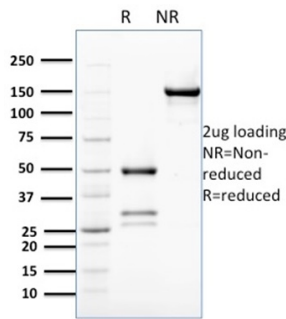
Western Blot Analysis of PC-3, HEK293, MCF-7, HEPG2 and U87 cells. BCL2L2 Mouse Monoclonal Antibody (CPTC-BCL2L2-2).



Analysis of Protein Array containing more than 19,000 full-length human proteins using BCL2-like 2 Mouse Monoclonal Antibody (CPTC-BCL2L2-2). Z- and S- Score: The Z-score represents the strength of a signal that a monoclonal antibody (MAb) (in combination with a fluorescently-tagged anti-IgG secondary antibody) produces when binding to a particular protein on the HuProt™ array. Z-scores are described in units of standard deviations (SD's) above the mean value of all signals generated on that array. If targets on HuProt™ are arranged in descending order of the Z-score, the S-score is the difference (also in units of SD's) between the Z-score. S-score therefore represents the relative target specificity of a MAb to its intended target. A MAb is considered to be specific to its intended target, if the MAb has an S-score of at least 2.5. For example, if a MAb binds to protein X with a Z-score of 43 and to protein Y with a Z-score of 14, then the S-score for the binding of that MAb to protein X is equal to 29.



Western Blot Analysis of A-431, FaDu and Hep G2 cell lysates using BCL2L2 Mouse Monoclonal Antibody (CPTC-BCL2L2-2).



SDS-PAGE Analysis of Purified BCL2L2 Mouse Monoclonal Antibody (CPTC-BCL2L2-2). Confirmation of Purity and Integrity of Antibody.

Specificity & Comments

BCLW promotes cell survival. Blocks dexamethasone-induced apoptosis. Mediates survival of postmitotic Sertoli cells by suppressing death-promoting activity of BAX.

Supplied As

200ug/ml of Ab purified from Bioreactor Concentrate by Protein A/G. Prepared in 10mM PBS with 0.05% BSA & 0.05% azide. Also available WITHOUT BSA & azide at 1.0mg/ml.

Storage and Stability

Antibody with azide - store at 2 to 8 °C. Antibody without azide - store at -20 to -80 °C. Antibody is stable for 24 months. Non-hazardous. No MSDS required.

Research Areas

Apoptosis, Autophagy, Cardiovascular

Limitations and Warranty

This antibody is available for research use only and is not approved for use in diagnosis. There are no warranties, expressed or implied, which extend beyond this description. Company is not liable for any personal injury or economic loss resulting from this product.