

## Bcl-X (Apoptosis Marker) Antibody

Mouse Monoclonal Antibody [Clone BCL2L1/1762]

Catalog No	Format	Size
598-MSM4-P0	Purified Ab with BSA and Azide at 200ug/ml	20 ug
598-MSM4-P1	Purified Ab with BSA and Azide at 200ug/ml	100 ug
598-MSM4-P1ABX	Purified Ab WITHOUT BSA and Azide at 1.0mg/ml	100 ug

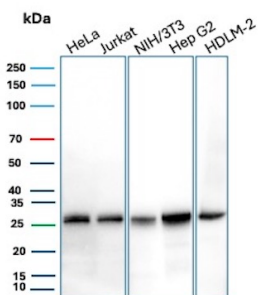
Applications	Tested Dillution	Note
Western Blot (WB)	2-4ug/ml	

### Product Details

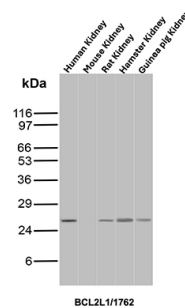
<b>Clone</b>	BCL2L1/1762
<b>Gene Name</b>	BCL2L1
<b>Immunogen</b>	Recombinant human BCL2L1 protein fragment (around aa 1-135) (exact sequence is proprietary)
<b>Host</b>	Mouse
<b>Clonality</b>	Monoclonal
<b>Isotype / Light Chain</b>	IgG2b / Kappa
<b>Mol. Weight of Antigen</b>	27kDa
<b>Cellular Localization</b>	Centrosome, Cytoplasm, Cytoplasmic vesicle, Cytoskeleton, Cytosol, Microtubule organizing center, Mitochondrion inner membrane, Mitochondrion matrix, Mitochondrion outer membrane, Nucleus membrane, Secretory vesicle, Synaptic vesicle membrane
<b>Species Reactivity</b>	Human
<b>Positive Control</b>	A-431 cells, HeLa, Jurkat, NIH/3T3, Hep G2 and HDLM-2 or Human Kidney

\*Optimal dilution for a specific application should be determined.

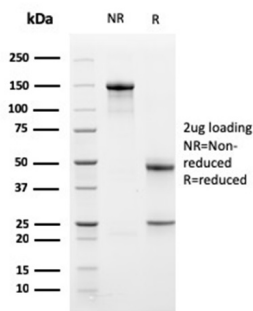
### Product Images for Bcl-X (Apoptosis Marker) Antibody



Western Blot Analysis of HeLa, Jurkat, NIH/3T3, Hep G2 and HDLM-2 cell lysates using Bcl-X Mouse Monoclonal Antibody (BCL2L1/1762).



Western blot analysis of Human Kidney, Mouse Kidney, Rat Kidney, Hamster Kidney and Guinea pig Kidney tissue lysates using Bcl-X Mouse Monoclonal Antibody (BCL2L1/1762).



SDS-PAGE Analysis of Purified Bcl-x Mouse Monoclonal Antibody (BCL2L1/1762). Confirmation of Purity and Integrity of Antibody.

### Specificity & Comments

Recognizes a protein of 27kDa, identified as the Bcl-X protein. This MAb shows no cross-reaction with Bcl-2 or Bax protein. Bcl-X has two isoforms, Bcl-XL (long), a 241-amino acid protein which suppresses cell death. And Bcl-XS (short), a 178-amino acid protein lacking a 63-amino acid domain which functions as a dominant inhibitor of Bcl-2.

### Supplied As

200ug/ml of Ab Purified from Bioreactor Concentrate by Protein A/G. Prepared in 10mM PBS with 0.05% BSA & 0.05% azide. Also available WITHOUT BSA & azide at 1.0mg/ml.

### Storage and Stability

Antibody with azide - store at 2 to 8°C. Antibody without azide - store at -20 to -80°C. Antibody is stable for 24 months. Non-hazardous. No MSDS required.

### Research Areas

Apoptosis, Autophagy, Cardiovascular, Colon Cancer, Cytokine Signaling, Immunology, Infectious Disease, Lung Cancer, Mitochondria Marker, Signal Transduction

### Limitations and Warranty

This antibody is available for research use only and is not approved for use in diagnosis. There are no warranties, expressed or implied, which extend beyond this description. Company is not liable for any personal injury or economic loss resulting from this product.