

Bcl-X (Apoptosis Marker) Antibody

Mouse Monoclonal Antibody [Clone BX006 + 2H12]

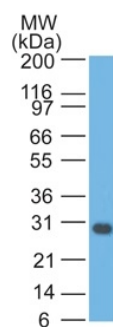
Catalog No	Format	Size
598-MSM3-P0	Purified Ab with BSA and Azide at 200ug/ml	20 ug
598-MSM3-P1	Purified Ab with BSA and Azide at 200ug/ml	100 ug
598-MSM3-P1ABX	Purified Ab WITHOUT BSA and Azide at 1.0mg/ml	100 ug

Applications	Tested Dillution	Note
Immunohistochemistry (IHC)	1-2ug/ml	30 min at RT. Staining of formalin-fixed tissues requires heating tissue sections in 10mM Tris with 1mM EDTA, pH 9.0, for 45 min at 95°C followed by cooling at RT for 20 minutes
Western Blot (WB)	2-4ug/ml	

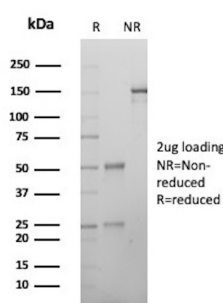
Product Details	
Clone	BX006 + 2H12
Gene Name	BCL2L1
Immunogen	A synthetic peptide, aa 3-14 (Cys-QSNRELVDFLS) of human Bcl-X protein (BX006 & 2H12)
Host	Mouse
Clonality	Monoclonal
Isotype / Light Chain	IgG2a / Kappa
Mol. Weight of Antigen	27kDa
Cellular Localization	Centrosome, Cytoplasm, Cytoplasmic vesicle, Cytoskeleton, Cytosol, Microtubule organizing center, Mitochondrion inner membrane, Mitochondrion matrix, Mitochondrion outer membrane, Nucleus membrane, Secretory vesicle, Synaptic vesicle membrane
Species Reactivity	Human, Mouse, Pig, Rat
Positive Control	HL-60 or HeLa cells. Reed-Sternberg cells in Hodgkin's lymphoma., Jurkat, K562

*Optimal dilution for a specific application should be determined.

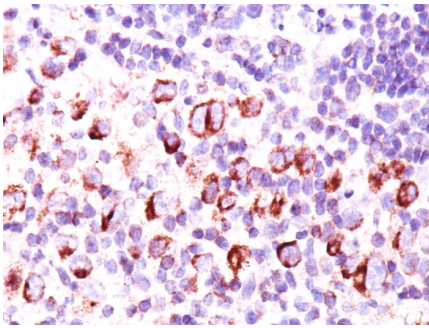
Product Images for Bcl-X (Apoptosis Marker) Antibody



Western Blot Analysis of Jurkat cell lysate using Bcl-X Monoclonal Antibody (BX006 + 2H12).



SDS-PAGE Analysis of Purified Bcl-2-like protein 1 Mouse Monoclonal Antibody (BX006 + 2H12). Confirmation of Purity and Integrity of Antibody.



Formalin-fixed, paraffin-embedded Hodgkin's lymphoma stained with Bcl-x Monoclonal Antibody (BX006 + 2H12).

Specificity & Comments

Recognizes a protein of 27kDa, identified as the Bcl-X protein. This MAb shows no cross-reaction with Bcl-2 or Bax protein. Bcl-X has two isoforms, Bcl-XL (long), a 241 amino acid protein which suppresses cell death. And Bcl-XS (short), a 178 amino acid protein lacking a 63 amino acid domain which functions as a dominant inhibitor of Bcl-2. This MAb reacts with both Bcl-XS and Bcl-XL proteins.

Supplied As

200ug/ml of Ab Purified from Bioreactor Concentrate by Protein A/G. Prepared in 10mM PBS with 0.05% BSA & 0.05% azide. Also available WITHOUT BSA & azide at 1.0mg/ml.

Storage and Stability

Antibody with azide - store at 2 to 8°C. Antibody without azide - store at -20 to -80°C. Antibody is stable for 24 months. Non-hazardous. No MSDS required.

Research Areas

Apoptosis, Autophagy, Cardiovascular, Colon Cancer, Cytokine Signaling, Immunology, Infectious Disease, Lung Cancer, Mitochondria Marker, Signal Transduction

Limitations and Warranty

This antibody is available for research use only and is not approved for use in diagnosis. There are no warranties, expressed or implied, which extend beyond this description. Company is not liable for any personal injury or economic loss resulting from this product.
