

## Recombinant Bcl-2 (Apoptosis & Follicular Lymphoma Marker) Antibody

Rabbit Monoclonal Antibody [Clone BCL2/2210R]

Catalog No	Format	Size
596-RBM10-P0	Purified Ab with BSA and Azide at 200ug/ml	20 ug
596-RBM10-P1	Purified Ab with BSA and Azide at 200ug/ml	100 ug
596-RBM10-P1ABX	Purified Ab WITHOUT BSA and Azide at 1.0mg/ml	100 ug

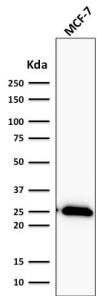
Applications	Tested Dillution	Note
Immunohistochemistry (IHC)	1-2ug/ml	30 min at RT. Staining of formalin-fixed tissues requires heating tissue sections in 10mM Tris with 1mM EDTA, pH 9.0, for 45 min at 95°C followed by cooling at RT for 20 minutes
Western Blot (WB)	2-4ug/ml	

### Product Details

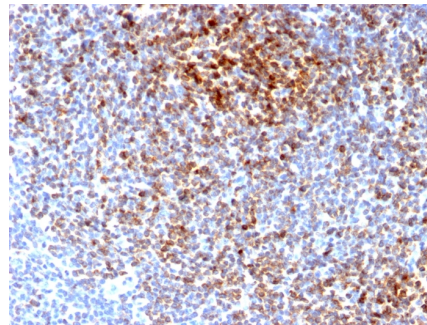
<b>Clone</b>	BCL2/2210R
<b>Gene Name</b>	BCL2
<b>Immunogen</b>	Recombinant full-length human bcl-2 protein
<b>Host</b>	Rabbit
<b>Clonality</b>	Monoclonal
<b>Isotype / Light Chain</b>	IgG / Kappa
<b>Mol. Weight of Antigen</b>	25-26kDa
<b>Cellular Localization</b>	Cytoplasm, Endoplasmic reticulum membrane, Mitochondrion outer membrane, Nucleus membrane
<b>Species Reactivity</b>	Human
<b>Positive Control</b>	HL-60 or HeLa cells. Tonsil or follicular lymphomas., Jurkat, K562, Human Spleen, Human Skeletal Muscle, THP-1

\*Optimal dilution for a specific application should be determined.

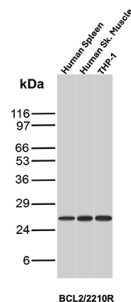
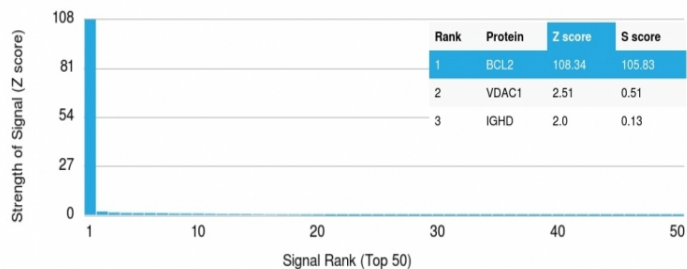
### Product Images for Recombinant Bcl-2 (Apoptosis & Follicular Lymphoma Marker) Antibody



Western Blot Analysis of human MCF-7 cell lysate using Bcl-2 Rabbit Recombinant Monoclonal Antibody (BCL2/2210R).

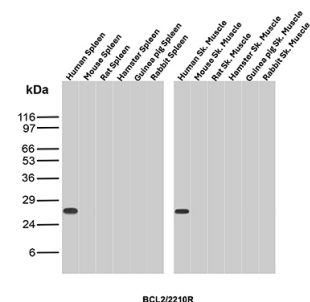


Formalin-fixed, paraffin-embedded human Follicular Lymphoma stained with Bcl-2 Rabbit Recombinant Monoclonal Antibody (BCL2/2210R).

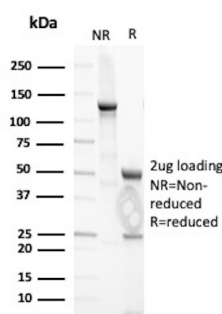


Western blot analysis of Human Spleen, Human Skeletal Muscle, and THP-1 lysates using BCL2 Recombinant Rabbit Monoclonal Antibody (BCL2/2210R).

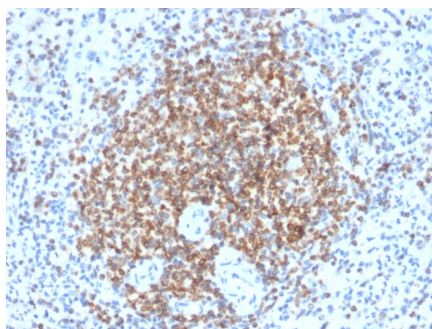
Analysis of Protein Array containing more than 19,000 full-length human proteins using Bcl-2 Rabbit Recombinant Monoclonal Antibody (BCL2/2210R). Z- and S- Score: The Z-score represents the strength of a signal that a monoclonal antibody (MAb) (in combination with a fluorescently-tagged anti-IgG secondary antibody) produces when binding to a particular protein on the HuProt™ array. Z-scores are described in units of standard deviations (SD's) above the mean value of all signals generated on that array. If targets on HuProt™ are arranged in descending order of the Z-score, the S-score is the difference (also in units of SD's) between the Z-score. S-score therefore represents the relative target specificity of a MAb to its intended target. A MAb is considered to be specific to its intended target, if the MAb has an S-score of at least 2.5. For example, if a MAb binds to protein X with a Z-score of 43 and to protein Y with a Z-score of 14, then the S-score for the binding of that MAb to protein X is equal to 29.



Western blot analysis of Human Spleen, Mouse Spleen, Rat Spleen, Hamster Spleen, Guinea pig Spleen, Rabbit Spleen, Human Skeletal Muscle, Mouse Skeletal Muscle, Rat Skeletal Muscle, Hamster Skeletal Muscle, Guinea pig Skeletal Muscle and Rabbit Skeletal Muscle tissue lysates using BCL2 Recombinant Rabbit Monoclonal Antibody (BCL2/2210R).



SDS-PAGE Analysis of Purified Apoptosis regulator Bcl-2 Recombinant Rabbit Monoclonal Antibody (BCL2/2210R). Confirmation of Purity and Integrity of Antibody.



Formalin-fixed, paraffin-embedded human spleen stained with Bcl-2 Rabbit Recombinant Monoclonal Antibody (BCL2/2210R).

### **Specificity & Comments**

This antibody recognizes a protein of 25-26kDa, identified as the bcl-2 lpha oncoprotein. It shows no cross-reaction with Bcl-x or Bax protein. Expression of bcl-2 lpha oncoprotein inhibits the programmed cell death (apoptosis). In most follicular lymphomas, neoplastic germinal centers express high levels of bcl-2 lpha protein, whereas the normal or hyperplastic germinal centers are negative. Consequently, this antibody is valuable when distinguishing between reactive and neoplastic follicular proliferation in lymph node biopsies. It may also be used in distinguishing between those follicular lymphomas that express bcl-2 protein and the small number in which the neoplastic cells are bcl-2 negative.

---

### **Limitations and Warranty**

This antibody is available for research use only and is not approved for use in diagnosis. There are no warranties, expressed or implied, which extend beyond this description. Company is not liable for any personal injury or economic loss resulting from this product.

---

### **Supplied As**

200ug/ml of Ab Purified from Bioreactor Concentrate by Protein A/G. Prepared in 10mM PBS with 0.05% BSA & 0.05% azide. Also available WITHOUT BSA & azide at 1.0mg/ml.

---

### **Storage and Stability**

Antibody with azide - store at 2 to 8°C. Antibody without azide - store at -20 to -80°C. Antibody is stable for 24 months. Non-hazardous. No MSDS required.

---

### **Research Areas**

AKT Signaling, Apoptosis, Autophagy, Basal Cell Marker, Cancer, Cardiovascular, Cytokine Signaling, Hypoxia, Immunology, Lung Cancer, Mitochondria Marker, Neuroinflammation, Signal Transduction

---