

Recombinant Bcl-2 (Apoptosis & Follicular Lymphoma Marker) Antibody

Mouse Monoclonal Antibody [Clone rBCL2/796]

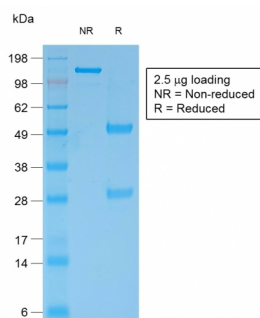
Catalog No	Format	Size
596-MSM9-P0	Purified Ab with BSA and Azide	200ug/ml
596-MSM9-P1	Purified Ab with BSA and Azide	200ug/ml
596-MSM9-P1ABX	Purified Ab WITHOUT BSA and Azide	1.0mg/ml

Applications	Tested Dillution
Flow Cytometry (Flow)	1-2ug/million cells
Immunofluorescence (IF)	1-3ug/ml
Immunohistochemistry (IHC)	1-2ug/ml
Western Blot (WB)	2-4ug/ml

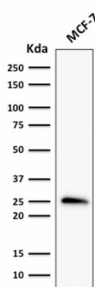
Product Details	
Clone	rBCL2/796
Gene Name	BCL2
Immunogen	Recombinant full-length human bcl-2 protein
Host	Mouse
Clonality	Monoclonal
Isotype / Light Chain	IgG1 / Kappa
Mol. Weight of Antigen	25-26kDa
Cellular Localization	Cytoplasm, Endoplasmic reticulum membrane, Mitochondrion outer membrane, Nucleus membrane
Species Reactivity	Human
Positive Control	A431, HL-60 or HeLa cells. Tonsil or follicular lymphomas., Jurkat, K562, U937

**Optimal dilution for a specific application should be determined.*

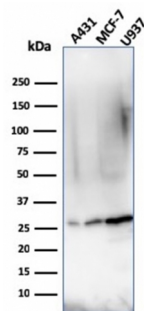
Product Images for Recombinant Bcl-2 (Apoptosis & Follicular Lymphoma Marker) Antibody



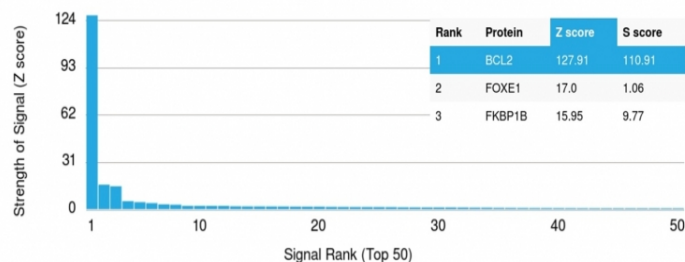
SDS-PAGE Analysis of Purified Bcl-2 Mouse Recombinant Monoclonal Antibody (rBCL2/796). Confirmation of Purity and Integrity of Antibody.



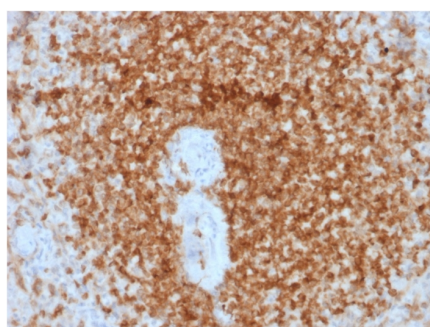
Western Blot Analysis of MCF-7 cell lysate using Bcl-2 Mouse Recombinant Monoclonal Antibody (rBCL2/796).



Western Blot Analysis of A431, MCF-7, U937 cell lysate using Bcl-2 Mouse Recombinant Monoclonal Antibody (rBCL2/796).



Analysis of Protein Array containing more than 19,000 full-length human proteins using Bcl-2 Mouse Recombinant Monoclonal Antibody (rBCL2/796). Z- and S- Score: The Z-score represents the strength of a signal that a monoclonal antibody (MAb) (in combination with a fluorescently-tagged anti-IgG secondary antibody) produces when binding to a particular protein on the HuProt™ array. Z-scores are described in units of standard deviations (SD's) above the mean value of all signals generated on that array. If targets on HuProt™ are arranged in descending order of the Z-score, the S-score is the difference (also in units of SD's) between the Z-score. S-score therefore represents the relative target specificity of a MAb to its intended target. A MAb is considered to be specific to its intended target, if the MAb has an S-score of at least 2.5. For example, if a MAb binds to protein X with a Z-score of 43 and to protein Y with a Z-score of 14, then the S-score for the binding of that MAb to protein X is equal to 29.



Formalin-fixed, paraffin-embedded human Spleen stained with Bcl-2 Mouse Recombinant Monoclonal Antibody (rBCL2/796).

Specificity & Comments

This antibody recognizes a protein of 25-26kDa, identified as the bcl-2 protein. It shows no cross-reaction with Bcl-x or Bax protein. Expression of bcl-2 protein inhibits the programmed cell death (apoptosis). In most follicular lymphomas, neoplastic germinal centers express high levels of bcl-2 protein, whereas the normal or hyperplastic germinal centers are negative. Consequently, this antibody is valuable when distinguishing between reactive and neoplastic follicular proliferation in lymph node biopsies. It may also be used in distinguishing between those follicular lymphomas that express bcl-2 protein and the small number in which the neoplastic cells are bcl-2 negative.

Research Areas

Apoptosis, Autophagy, Cancer, Cardiovascular, Hypoxia, Immunology, AKT Signaling, Basal Cell Marker, Cytokine Signaling, Lung Cancer, Mitochondria Marker, Neuroinflammation, Signal Transduction

Known Applications & Suggested Dilutions

Flow Cytometry (1-2ug/million cells) | Immunofluorescence (1-2ug/ml) | Western Blot (1-2ug/ml) | Immunohistochemistry (Formalin-fixed) (1-2ug/ml for 30 minutes at RT), (Staining of formalin-fixed tissues is enhanced by heating tissue sections in 10mM Tris with 1mM EDTA Buffer, pH 9.0, for 45 min at 95°C followed by cooling at RT for 20 minutes), Optimal dilution for a specific application should be determined.

Supplied As

200ug/ml of Ab Purified from Bioreactor Concentrate by Protein A/G. Prepared in 10mM PBS with 0.05% BSA & 0.05% azide. Also available WITHOUT BSA & azide at 1.0mg/ml.

Storage and Stability

Antibody with azide - store at 2 to 8°C. Antibody without azide - store at -20 to -80°C. Antibody is stable for 24 months. Non-hazardous. No MSDS required.

Limitations and Warranty

This antibody is available for research use only and is not approved for use in diagnosis.

There are no warranties, expressed or implied, which extend beyond this description. Company is not liable for any personal injury or economic loss resulting from this product.
