

Bcl-2 (Apoptosis & Follicular Lymphoma Marker) Antibody

Mouse Monoclonal Antibody [Clone BCL2/782]

Catalog No	Format	Size
596-MSM5-P0	Purified Ab with BSA and Azide at 200ug/ml	20 ug
596-MSM5-P1	Purified Ab with BSA and Azide at 200ug/ml	100 ug
596-MSM5-P1ABX	Purified Ab WITHOUT BSA and Azide at 1.0mg/ml	100 ug

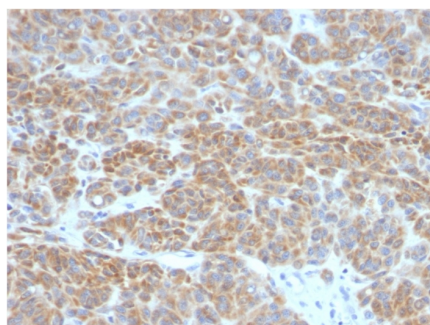
Applications	Tested Dillution	Note
Immunohistochemistry (IHC)	1-2ug/ml	30 min at RT. Staining of formalin-fixed tissues requires heating tissue sections in 10mM Tris with 1mM EDTA, pH 9.0, for 45 min at 95°C followed by cooling at RT for 20 minutes
Western Blot (WB)	2-4ug/ml	

Product Details

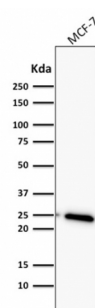
Clone	BCL2/782
Gene Name	BCL2
Immunogen	Recombinant full-length human bcl-2 protein
Host	Mouse
Clonality	Monoclonal
Isotype / Light Chain	IgG1 / Kappa
Mol. Weight of Antigen	25-26kDa
Cellular Localization	Cytoplasm, Endoplasmic reticulum membrane, Mitochondrion outer membrane, Nucleus membrane
Species Reactivity	Human
Positive Control	HL-60 or HeLa cells. Tonsil or follicular lymphomas., Jurkat, K562

**Optimal dilution for a specific application should be determined.*

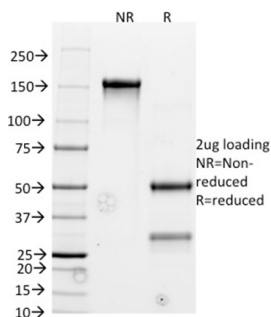
Product Images for Bcl-2 (Apoptosis & Follicular Lymphoma Marker) Antibody



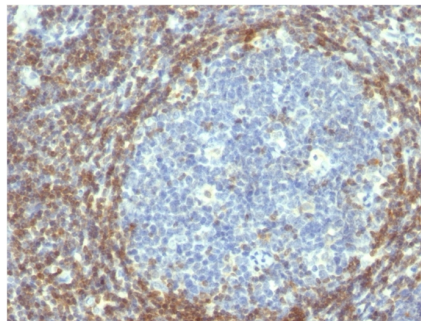
Formalin-fixed, paraffin-embedded human Melanoma stained with Bcl-2 Mouse Monoclonal Antibody (BCL2/782).



Western Blot Analysis of MCF-7 cell lysate using Bcl-2 Mouse Monoclonal Antibody (BCL2/782).



SDS-PAGE Analysis of Purified Bcl-2 Mouse Monoclonal Antibody (BCL2/782). Confirmation of Integrity and Purity of Antibody.



Formalin-fixed, paraffin-embedded human Tonsil stained with Bcl-2 Mouse Monoclonal Antibody (BCL2/782).

Specificity & Comments

This antibody recognizes a protein of 25-26kDa, identified as the bcl-2 lpha oncoprotein. It shows no cross-reaction with Bcl-x or Bax protein. Expression of bcl-2 lpha oncoprotein inhibits the programmed cell death (apoptosis). In most follicular lymphomas, neoplastic germinal centers express high levels of bcl-2 lpha protein, whereas the normal or hyperplastic germinal centers are negative. Consequently, this antibody is valuable when distinguishing between reactive and neoplastic follicular proliferation in lymph node biopsies. It may also be used in distinguishing between those follicular lymphomas that express bcl-2 protein and the small number in which the neoplastic cells are bcl-2 negative.

Supplied As

200ug/ml of Ab Purified from Bioreactor Concentrate by Protein A/G. Prepared in 10mM PBS with 0.05% BSA & 0.05% azide. Also available WITHOUT BSA & azide at 1.0mg/ml.

Storage and Stability

Antibody with azide - store at 2 to 8°C. Antibody without azide - store at -20 to -80°C. Antibody is stable for 24 months. Non-hazardous. No MSDS required.

Research Areas

Apoptosis, Autophagy, Cancer, Cardiovascular, Hypoxia, Immunology, AKT Signaling, Basal Cell Marker, Cytokine Signaling, Lung Cancer, Mitochondria Marker, Neuroinflammation, Signal Transduction

Limitations and Warranty

This antibody is available for research use only and is not approved for use in diagnosis. There are no warranties, expressed or implied, which extend beyond this description. Company is not liable for any personal injury or economic loss resulting from this product.