

Recombinant Bcl-2 (Apoptosis& Follicular Lymphoma Marker) Antibody

Mouse Monoclonal Antibody [Clone rBCL2/782]

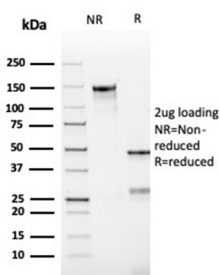
Catalog No	Format	Size
596-MSM11-P0	Purified Ab with BSA and Azide at 200ug/ml	20 ug
596-MSM11-P1	Purified Ab with BSA and Azide at 200ug/ml	100 ug
596-MSM11-P1ABX	Purified Ab WITHOUT BSA and Azide at 1.0mg/ml	100 ug

Applications	Tested Dillution	Note
Flow Cytometry (Flow)	1-2ug/million cells	
Immunofluorescence (IF)	1-3ug/ml	
Immunohistochemistry (IHC)	1-2ug/ml	30 min at RT. Staining of formalin-fixed tissues requires heating tissue sections in 10mM Tris with 1mM EDTA, pH 9.0, for 45 min at 95°C followed by cooling at RT for 20 minutes
Western Blot (WB)	2-4ug/ml	

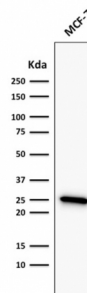
Product Details	
Clone	rBCL2/782
Gene Name	BCL2
Immunogen	Recombinant full-length human BCL2 protein
Host	Mouse
Clonality	Monoclonal
Isotype / Light Chain	IgG1 / Kappa
Mol. Weight of Antigen	25-26kDa
Cellular Localization	Cytoplasm, Endoplasmic reticulum membrane, Mitochondrion outer membrane, Nucleus membrane
Species Reactivity	Human
Positive Control	Jurkat, K562 or HeLa cells. Human tonsil or follicular lymphomas. Human Skeletal muscle, Human Spleen, Jurkat , MCF7.

*Optimal dilution for a specific application should be determined.

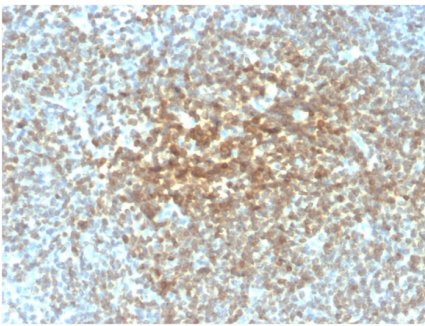
Product Images for Recombinant Bcl-2 (Apoptosis& Follicular Lymphoma Marker) Antibody



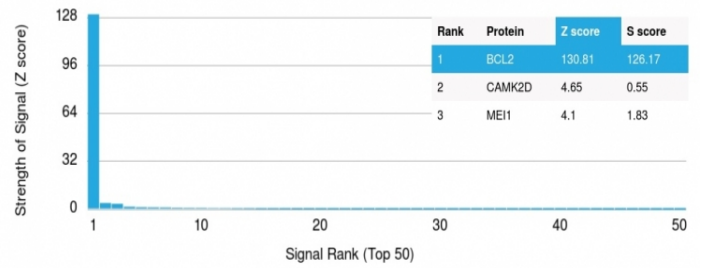
SDS-PAGE Analysis Purified Bcl-2 Mouse Recombinant Monoclonal Antibody (rBCL2/782). Confirmation of Purity and Integrity of Antibody.



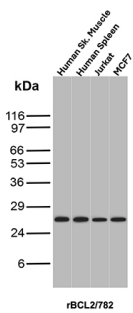
Western blot analysis of MCF-7 cell lysate using Bcl-2 Mouse Recombinant Monoclonal Antibody (rBCL2/782).



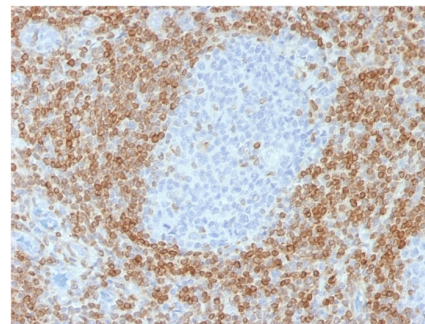
Formalin-fixed, paraffin-embedded human follicular lymphoma stained with Bcl-2 Recombinant Mouse Monoclonal Antibody (rBCL2/782).



Analysis of Protein Array containing more than 19,000 full-length human proteins using Bcl-2 Mouse Recombinant Monoclonal Antibody (rBCL2/782). Z- and S- Score: The Z-score represents the strength of a signal that a monoclonal antibody (MAb) (in combination with a fluorescently-tagged anti-IgG secondary antibody) produces when binding to a particular protein on the HuProt™ array. Z-scores are described in units of standard deviations (SD's) above the mean value of all signals generated on that array. If targets on HuProt™ are arranged in descending order of the Z-score, the S-score is the difference (also in units of SD's) between the Z-score. S-score therefore represents the relative target specificity of a MAb to its intended target. A MAb is considered to be specific to its intended target, if the MAb has an S-score of at least 2.5. For example, if a MAb binds to protein X with a Z-score of 43 and to protein Y with a Z-score of 14, then the S-score for the binding of that MAb to protein X is equal to 29.



Western Blot Analysis of Human Skeletal muscle, Human Spleen, Jurkat and MCF7 lysates using BCL2 Mouse Recombinant Monoclonal Antibody (rBCL2/782).



Formalin-fixed, paraffin-embedded human tonsil stained with Bcl-2 Mouse Recombinant Monoclonal Antibody (rBCL2/782).

Specificity & Comments

This antibody recognizes a protein of 25-26kDa, identified as the bcl-2 alpha oncoprotein. It shows no cross-reaction with Bcl-x or Bax protein. Expression of bcl-2 alpha oncoprotein inhibits the programmed cell death (apoptosis). In most follicular lymphomas, neoplastic germinal centers express high levels of bcl-2 alpha protein, whereas the normal or hyperplastic germinal centers are negative. Consequently, this antibody is valuable when distinguishing between reactive and neoplastic follicular proliferation in lymph node biopsies. It may also be used in distinguishing between those follicular lymphomas that express bcl-2 protein and the small number in which the neoplastic cells are bcl-2 negative.

Limitations and Warranty

This antibody is available for research use only and is not approved for use in diagnosis. There are no warranties, expressed or implied, which extend beyond this description. Company is not liable for any personal injury or economic loss resulting from this product.

Supplied As

200ug/ml of Ab purified from Bioreactor Concentrate by Protein A/G. Prepared in 10mM PBS with 0.05% BSA & 0.05% azide. Also available WITHOUT BSA & azide at 1.0mg/ml.

Storage and Stability

Antibody with azide - store at 2 to 8 °C. Antibody without azide - store at -20 to -80 °C. Antibody is stable for 24 months. Non-hazardous. No MSDS required.

Research Areas

AKT Signaling, Apoptosis, Autophagy, Basal Cell Marker, Cardiovascular, Cytokine Signaling, Immunology, Lung Cancer, Mitochondria Marker, Neuroinflammation, Signal Transduction