

Recombinant Cyclin D1 (G1-Cyclin & Mantle Cell Lymphoma Marker) Antibody

Rabbit Monoclonal Antibody [Clone CCND1/3370R]

Catalog No	Format	Size
595-RBM11-P0	Purified Ab with BSA and Azide at 200ug/ml	20 ug
595-RBM11-P1	Purified Ab with BSA and Azide at 200ug/ml	100 ug
595-RBM11-P1ABX	Purified Ab WITHOUT BSA and Azide at 1.0mg/ml	100 ug

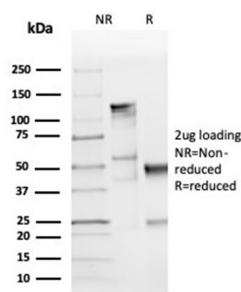
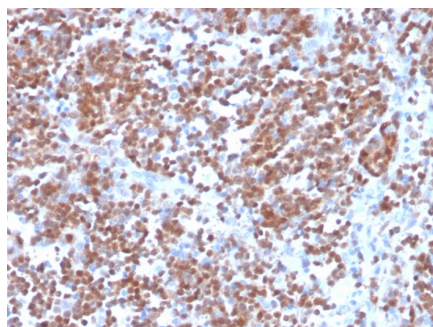
Applications	Tested Dillution	Note
Immunohistochemistry (IHC)	1-2ug/ml	30 min at RT. Staining of formalin-fixed tissues requires heating tissue sections in 10mM Tris with 1mM EDTA, pH 9.0, for 45 min at 95°C followed by cooling at RT for 20 minutes
Western Blot (WB)	2-4ug/ml	

Product Details

Clone	CCND1/3370R
Gene Name	CCND1
Immunogen	Synthetic peptide corresponding to residues within aa 270-295 of Cyclin D1
Host	Rabbit
Clonality	Monoclonal
Isotype / Light Chain	IgG / Kappa
Mol. Weight of Antigen	36kDa
Cellular Localization	Cytoplasm, Nucleus, Nucleus membrane
Species Reactivity	Human
Positive Control	RAW 264.7., Breast or Bladder Carcinomas., Human mantle cell lymphoma, HeLa, A431.

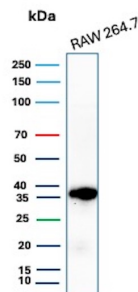
**Optimal dilution for a specific application should be determined.*

Product Images for Recombinant Cyclin D1 (G1-Cyclin & Mantle Cell Lymphoma Marker) Antibody

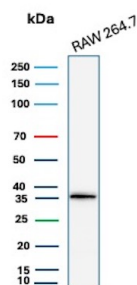


Formalin-fixed, paraffin-embedded human mantle cell lymphoma stained Cyclin D1 Recombinant Rabbit Monoclonal Antibody (CCND1/3370R).

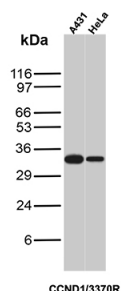
SDS-PAGE Analysis of Purified Cyclin D1 Recombinant Rabbit Monoclonal Antibody (CCND1/3370R). Confirmation of Purity and Integrity of Antibody.



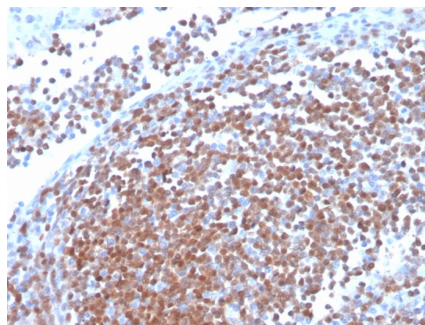
Western Blot Analysis of RAW 264.7 lysate using Cyclin D1 Recombinant Rabbit Monoclonal Antibody (CCND1/3370R).



Western Blot Analysis of RAW 264.7 lysate using Cyclin D1 Recombinant Rabbit Monoclonal Antibody (CCND1/3370R).



Western Blot Analysis of A431, HeLa cell lysates using CCND1 Recombinant Rabbit Monoclonal Antibody (CCND1/3370R)



Formalin-fixed, paraffin-embedded human mantle cell lymphoma stained Cyclin D1 Recombinant Rabbit Monoclonal Antibody (CCND1/3370R).

Specificity & Comments

Recognizes a protein of 36kDa, identified as cyclin D1. Cyclin D1, one of the key cell cycle regulators, is a putative proto-oncogene overexpressed in a wide variety of human neoplasms. This antibody neutralizes the activity of cyclin D1 in vivo. About 60% of mantle cell lymphomas (MCL) contain a t(11; 14)(q13; q32) translocation resulting in over-expression of cyclin D1. This antibody is useful in identifying mantle cell lymphomas (cyclin D1 positive) from CLL/SLL and follicular lymphomas (cyclin D1 negative). Occasionally, hairy cell leukemia and plasma cell myeloma weakly express Cyclin D1.

Supplied As

200ug/ml of Ab purified from Bioreactor Concentrate by Protein A/G. Prepared in 10mM PBS with 0.05% BSA & 0.05% azide. Also available WITHOUT BSA & azide at 1.0mg/ml.

Storage and Stability

Antibody with azide - store at 2 to 8 °C. Antibody without azide - store at -20 to -80 °C. Antibody is stable for 24 months. Non-hazardous. No MSDS required.

Research Areas

Breast Cancer, Cardiovascular, Immunology, AKT Signaling, Bladder Cancer, Colon Cancer, Cytokine Signaling, Infectious Disease, Lung Cancer, Nuclear Marker, Signal Transduction, Transcription Factors

Limitations and Warranty

This antibody is available for research use only and is not approved for use in diagnosis. There are no warranties, expressed or implied, which extend beyond this description. Company is not liable for any personal injury or economic loss resulting from this product.