

## Cyclin D1 (G1-Cyclin & Mantle Cell Lymphoma Marker) Antibody

Mouse Monoclonal Antibody [Clone CCND1/3548]

Catalog No	Format	Size
595-MSM8-P0	Purified Ab with BSA and Azide at 200ug/ml	20 ug
595-MSM8-P1	Purified Ab with BSA and Azide at 200ug/ml	100 ug
595-MSM8-P1ABX	Purified Ab WITHOUT BSA and Azide at 1.0mg/ml	100 ug

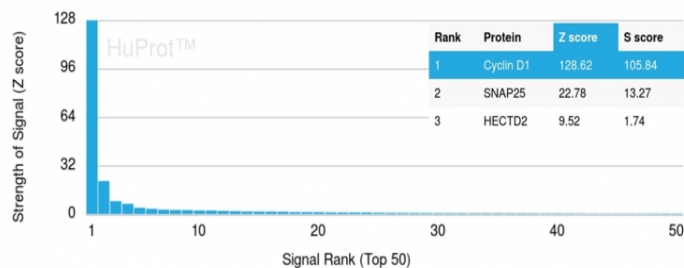
Applications	Tested Dillution	Note
--------------	------------------	------

### Product Details

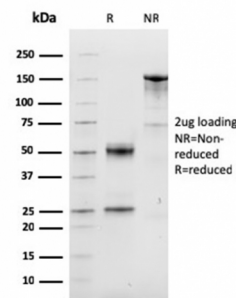
<b>Clone</b>	CCND1/3548
<b>Gene Name</b>	CCND1
<b>Immunogen</b>	Recombinant fragment of human CCND1 (around aa 115-270) protein (exact sequence is proprietary)
<b>Host</b>	Mouse
<b>Clonality</b>	Monoclonal
<b>Isotype / Light Chain</b>	IgG2b / Kappa
<b>Mol. Weight of Antigen</b>	36kDa
<b>Cellular Localization</b>	Cytoplasm, Nucleus, Nucleus membrane
<b>Species Reactivity</b>	Human
<b>Positive Control</b>	Breast or Bladder Carcinomas., BT474, HT29, Jurkat or A431 cells. Mantle cell lymphoma, MCF-7, MDA-MB-453, Ramos, SKBR3, T47D, ZR75

\*Optimal dilution for a specific application should be determined.

### Product Images for Cyclin D1 (G1-Cyclin & Mantle Cell Lymphoma Marker) Antibody



Analysis of Protein Array containing more than 19,000 full-length human proteins using Cyclin D1 Mouse Monoclonal Antibody (CCND1/2593). Z- and S- Score: The Z-score represents the strength of a signal that a monoclonal antibody (Monoclonal Antibody) (in combination with a fluorescently-tagged anti-IgG secondary antibody) produces when binding to a particular protein on the HuProt™ array. Z-scores are described in units of standard deviations (SD,  $\sigma$ s) above the mean value of all signals generated on that array. If targets on HuProt™ are arranged in descending order of the Z-score, the S-score is the difference (also in units of SD,  $\sigma$ s) between the Z-score. S-score therefore represents the relative target specificity of a Monoclonal Antibody to its intended target. A Monoclonal Antibody is considered to be specific to its intended target, if the Monoclonal Antibody has an S-score of at least 2.5. For example, if a Monoclonal Antibody binds to protein X with a Z-score of 43 and to protein Y with a Z-score of 14, then the S-score for the binding of that Monoclonal Antibody to protein X is equal to 29.



SDS-PAGE Analysis of Purified Cyclin D1 Mouse Monoclonal Antibody (CCND1/3548). Confirmation of Purity and Integrity of Antibody.

### **Specificity & Comments**

Recognizes a protein of 36kDa, identified as cyclin D1. Cyclin D1, one of the key cell cycle regulators, is a putative proto-oncogene overexpressed in a wide variety of human neoplasms. This antibody neutralizes the activity of cyclin D1 in vivo. About 60% of mantle cell lymphomas (MCL) contain a t(11; 14)(q13; q32) translocation resulting in over-expression of cyclin D1. This antibody is useful in identifying mantle cell lymphomas (cyclin D1 positive) from CLL/SLL and follicular lymphomas (cyclin D1 negative). Occasionally, hairy cell leukemia and plasma cell myeloma weakly express Cyclin D1.

---

### **Limitations and Warranty**

This antibody is available for research use only and is not approved for use in diagnosis. There are no warranties, expressed or implied, which extend beyond this description. Company is not liable for any personal injury or economic loss resulting from this product.

---

### **Supplied As**

200ug/ml of Ab Purified from Bioreactor Concentrate by Protein A/G. Prepared in 10mM PBS with 0.05% BSA & 0.05% azide. Also available WITHOUT BSA & azide at 1.0mg/ml.

---

### **Storage and Stability**

Antibody with azide - store at 2 to 8°C. Antibody without azide - store at -20 to -80°C. Antibody is stable for 24 months. Non-hazardous. No MSDS required.

---

### **Research Areas**

AKT Signaling, Bladder Cancer, Breast Cancer, Cardiovascular, Colon Cancer, Cytokine Signaling, Immunology, Infectious Disease, Lung Cancer, Nuclear Marker, Signal Transduction, Transcription Factors

---