

## Retinol Binding Protein (RBP) Antibody

Mouse Monoclonal Antibody [Clone SPM442]

Catalog No	Format	Size
5947-MSM1X-P0	Purified Ab with BSA and Azide at 200ug/ml	20 ug
5947-MSM1X-P1	Purified Ab with BSA and Azide at 200ug/ml	100 ug
5947-MSM1X-P1ABX	Purified Ab WITHOUT BSA and Azide at 1.0mg/ml	100 ug

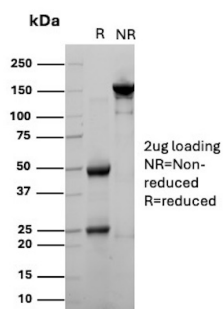
Applications	Tested Dillution	Note
Immunofluorescence (IF)	1-3ug/ml	
Immunohistochemistry (IHC)	1-2ug/ml	30 min at RT. Staining of formalin-fixed tissues requires heating tissue sections in 10mM Tris with 1mM EDTA, pH 9.0, for 45 min at 95°C followed by cooling at RT for 20 minutes
Western Blot (WB)	2-4ug/ml	

### Product Details

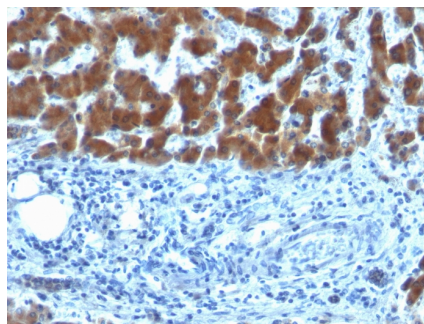
Clone	SPM442
Gene Name	RBP1
Immunogen	Retinol binding protein Purified from human plasma
Host	Mouse
Clonality	Monoclonal
Isotype / Light Chain	IgG1 / Kappa
Mol. Weight of Antigen	21-25kDa
Cellular Localization	Cytoplasm
Species Reactivity	Goat, Human, Monkey, Mouse, Rabbit, Rat
Positive Control	Liver or placenta.

\*Optimal dilution for a specific application should be determined.

### Product Images for Retinol Binding Protein (RBP) Antibody



SDS-PAGE Analysis of Purified Retinol-binding protein 1 Mouse Monoclonal Antibody (SPM442). Confirmation of Purity and Integrity of Antibody.



Formalin-fixed, paraffin-embedded human Hepatocellular Carcinoma stained with RBP1 (SPM442)

**Specificity & Comments**

Recognizes a protein of 21kDa-25kDa, identified as retinol binding protein (RBP). Its epitope localizes between aa 74-182 of human RBP. This MAb recognizes reduced and carboxy-methylated RBP (RCM-RBP) as well as the circulatory RBP but not the native RBP, thereby suggesting that its epitope becomes accessible either on unfolding or upon binding of RBP to transthyretin (prealbumin). RBP is responsible for distributing retinol from the retinoid stores in the liver to the various target tissues. Once secreted into the blood with bound retinol, the vitamin carrier circulates complexed with transthyretin prior to vitamin delivery at the plasma membrane through a receptor-mediated mechanism.

---

**Limitations and Warranty**

This antibody is available for research use only and is not approved for use in diagnosis. There are no warranties, expressed or implied, which extend beyond this description. Company is not liable for any personal injury or economic loss resulting from this product.

---

**Supplied As**

200ug/ml of Ab Purified from Bioreactor Concentrate by Protein A/G. Prepared in 10mM PBS with 0.05% BSA & 0.05% azide. Also available WITHOUT BSA & azide at 1.0mg/ml.

---

**Storage and Stability**

Antibody with azide - store at 2 to 8°C. Antibody without azide - store at -20 to -80°C. Antibody is stable for 24 months. Non-hazardous. No MSDS required.

---

**Research Areas**

Infectious Disease

---