

## Recombinant Actin, Smooth Muscle (Leiomyosarcoma Marker) Antibody

Mouse Monoclonal Antibody [Clone rACTA2/1625]

Catalog No	Format	Size
59-MSM5-P0	Purified Ab with BSA and Azide at 200ug/ml	20 ug
59-MSM5-P1	Purified Ab with BSA and Azide at 200ug/ml	100 ug
59-MSM5-P1ABX	Purified Ab WITHOUT BSA and Azide at 1.0mg/ml	100 ug

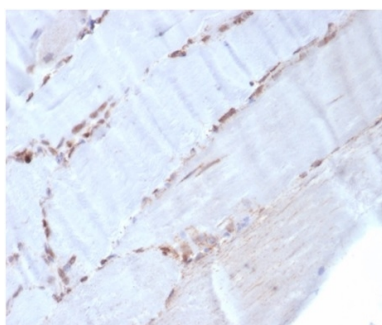
Applications	Tested Dillution	Note
Immunohistochemistry (IHC)	1-2ug/ml	30 min at RT. Staining of formalin-fixed tissues requires heating tissue sections in 10mM Tris with 1mM EDTA, pH 9.0, for 45 min at 95°C followed by cooling at RT for 20 minutes
Western Blot (WB)	2-4ug/ml	

### Product Details

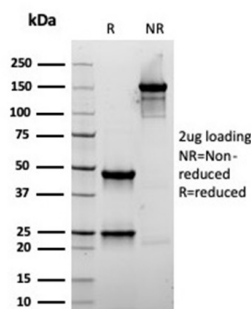
<b>Clone</b>	rACTA2/1625
<b>Gene Name</b>	ACTA2
<b>Immunogen</b>	N-Terminal decapeptide of alpha smooth muscle isoform of actin and conjugated to KLH
<b>Host</b>	Mouse
<b>Clonality</b>	Monoclonal
<b>Isotype / Light Chain</b>	IgG1 / Kappa
<b>Mol. Weight of Antigen</b>	42kDa
<b>Cellular Localization</b>	Cytoplasm, Cytoskeleton
<b>Species Reactivity</b>	Human
<b>Positive Control</b>	Blood vessels in all tissues, smooth muscle or leiomyosarcoma. Skeletal muscle.

\*Optimal dilution for a specific application should be determined.

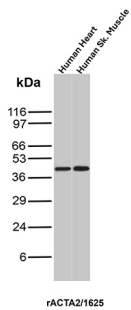
### Product Images for Recombinant Actin, Smooth Muscle (Leiomyosarcoma Marker) Antibody



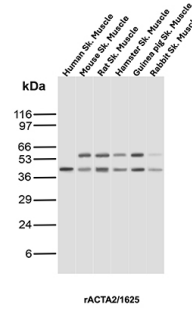
Formalin-fixed, paraffin-embedded human skeletal muscle stained with Smooth Muscle Actin Recombinant Mouse Monoclonal (rACTA2/1625).



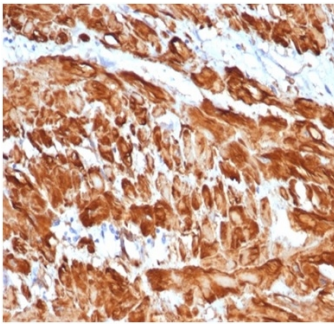
SDS-PAGE Analysis



Western Blot Analysis of Human Heart and Human Skeletal muscle tissue lysates using Smooth Muscle Actin Recombinant Mouse Monoclonal Antibody (rACTA2/1625).



Western Blot Analysis of Skeletal muscle tissue lysates of different species using Smooth Muscle Actin Recombinant Mouse Monoclonal Antibody (rACTA2/1625).



Formalin-fixed, paraffin-embedded human uterus stained with Smooth Muscle Actin Recombinant Mouse Monoclonal (rACTA2/1625).

### Specificity & Comments

Actin is a major component of the cytoskeleton and is present in most cell types. It is highly specific to actin from smooth muscles. This MAb does not stain cardiac or skeletal muscle; however, it does stain myofibroblasts and myoepithelial cells. This antibody could be used together with anti-muscle specific actin and myogenin in making a diagnosis of smooth muscle and skeletal muscle tumors. In most cases of rhabdomyosarcoma, this antibody yields negative results whereas anti-muscle specific actin and myogenin are positive. Leiomyosarcomas are positive only with anti-muscle specific actin and anti-smooth muscle actin and are negative with anti-myogenin.

### Limitations and Warranty

This antibody is available for research use only and is not approved for use in diagnosis. There are no warranties, expressed or implied, which extend beyond this description. Company is not liable for any personal injury or economic loss resulting from this product.

### Supplied As

200ug/ml of Ab purified from Bioreactor Concentrate by Protein A/G. Prepared in 10mM PBS with 0.05% BSA & 0.05% azide. Also available WITHOUT BSA & azide at 1.0mg/ml.

### Storage and Stability

Antibody with azide - store at 2 to 8 °C. Antibody without azide - store at -20 to -80 °C. Antibody is stable for 24 months. Non-hazardous. No MSDS required.

### Research Areas

Cardiovascular, Mesenchymal Stem Cell Differentiation, Signal Transduction