

CD45RA (Leucocyte Marker) Antibody

Mouse Monoclonal Antibody [Clone 111-1C5]

Catalog No	Format	Size
5788-MSM8-P0	Purified Ab with BSA and Azide at 200ug/ml	20 ug
5788-MSM8-P1	Purified Ab with BSA and Azide at 200ug/ml	100 ug
5788-MSM8-P1ABX	Purified Ab WITHOUT BSA and Azide at 1.0mg/ml	100 ug

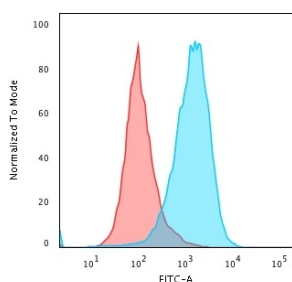
Applications	Tested Dillution	Note
Flow Cytometry (Flow)	1-2ug/million cells	
Immunofluorescence (IF)	1-3ug/ml	
Immunohistochemistry (IHC)	1-2ug/ml	30 min at RT. Staining of formalin-fixed tissues requires heating tissue sections in 10mM Tris with 1mM EDTA, pH 9.0, for 45 min at 95°C followed by cooling at RT for 20 minutes
Western Blot (WB)	2-4ug/ml	

Product Details

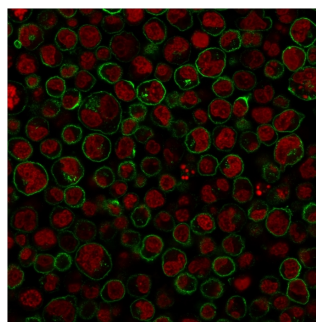
Clone	111-1C5
Gene Name	PTPRC
Immunogen	Stimulated human leukocytes
Host	Mouse
Clonality	Monoclonal
Isotype / Light Chain	IgG1 / Kappa
Mol. Weight of Antigen	205-220kDa
Cellular Localization	Cell membrane, Membrane raft
Species Reactivity	Human
Positive Control	Daudi, IM9 and human lymphocytes. Human lymph nodes, Jurkat, Raji, spleen and tonsils.

**Optimal dilution for a specific application should be determined.*

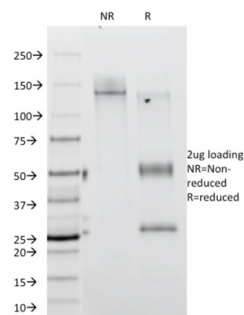
Product Images for CD45RA (Leucocyte Marker) Antibody



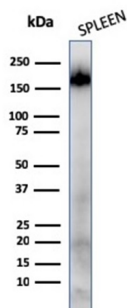
Flow Cytometric Analysis of paraformaldehyde-fixed Raji cells using CD45 Mouse Monoclonal Antibody (111-1C5) followed by Goat anti- Mouse- IgG-CF488 (Blue); Isotype Control (Red).



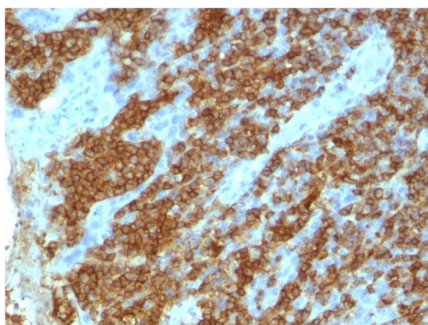
Paraformaldehyde-fixed Raji cells stained with CD45RA Mouse Monoclonal Antibody (111-1C5) followed by Goat anti-Mouse IgG-CF488 (Green). Counterstain is Phalloidin (red).



SDS-PAGE Analysis of Purified CD45RA Mouse Monoclonal Antibody (111-1C5). Confirmation of Purity and Integrity of Antibody.



Western Blot Analysis of human Spleen tissue lysates using CD45RA Mouse Monoclonal Antibody (111-1C5)



Formalin-fixed, paraffin-embedded human tonsil stained with CD45RA Mouse Monoclonal Antibody (111-1C5)

Specificity & Comments

Recognizes a protein of 205kDa-220kDa, identified as CD45RA which is an isoform of the human leukocyte common antigen (CD45). Human CD45 contains three exons which encode peptide segments designated A, B and C, respectively. The differential splicing of the exons generates at least five isoforms, ABC, AB, BC, B and O. This antibody reacts with ABC and BC isoforms. CD45RA is expressed on 40-50% of peripheral CD4+ T-cells, 50% of peripheral CD8+ T-cells, B-cells, and leukemic B-cell lines. T-cells expressing CD45RA are naive or virgin T-cells. T-cells expressing CD45RO are memory T-cells. CD45RA and CD45RO define complementary, predominantly non-overlapping populations of resting peripheral T-cells. This MAb is useful in study on the subpopulation of CD4+ or CD8+ T-cells. It can especially be used to differentiate T-cell lymphomas (CD45RO +ve) from B cell lymphomas (CD45RA +ve).

Limitations and Warranty

This antibody is available for research use only and is not approved for use in diagnosis. There are no warranties, expressed or implied, which extend beyond this description. Company is not liable for any personal injury or economic loss resulting from this product.

Supplied As

200ug/ml of Ab Purified from Bioreactor Concentrate by Protein A/G. Prepared in 10mM PBS with 0.05% BSA & 0.05% azide. Also available WITHOUT BSA & azide at 1.0mg/ml.

Storage and Stability

Antibody with azide - store at 2 to 8°C. Antibody without azide - store at -20 to -80°C. Antibody is stable for 24 months. Non-hazardous. No MSDS required.

Research Areas

Autophagy, B Cell Markers, Cancer, Dendritic Cell Marker, Developmental Biology, Hematopoietic Stem Cells, Immuno Oncology, Immunology, Mesenchymal Stem Cell Differentiation