

CD45RO (T-Cell Marker) Antibody

Mouse Monoclonal Antibody [Clone T200/797]

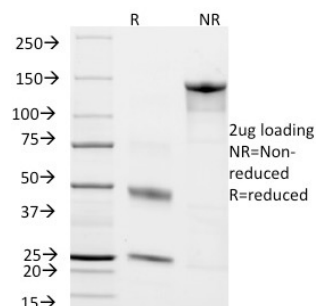
Catalog No	Format	Size
5788-MSM7-P0	Purified Ab with BSA and Azide	200ug/ml
5788-MSM7-P1	Purified Ab with BSA and Azide	200ug/ml
5788-MSM7-P1ABX	Purified Ab WITHOUT BSA and Azide	1.0mg/ml

Applications	Tested Dillution
Flow Cytometry (Flow)	1-2ug/million cells
Immunofluorescence (IF)	1-3ug/ml
Immunohistochemistry (IHC)	1-2ug/ml

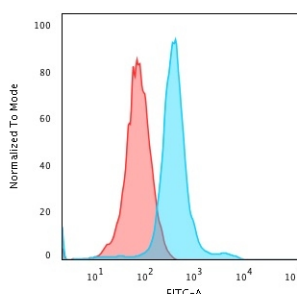
Product Details	
Clone	T200/797
Gene Name	PTPRC
Immunogen	Human T-lymphocytes
Host	Mouse
Clonality	Monoclonal
Isotype / Light Chain	IgG2a / Kappa
Mol. Weight of Antigen	180-185kDa
Cellular Localization	Cell membrane, Membrane raft
Species Reactivity	Human
Positive Control	CCRF-CEM, Jurkat or MOLT-4 cells. Paracortex in a tonsil or a reactive lymph node.

*Optimal dilution for a specific application should be determined.

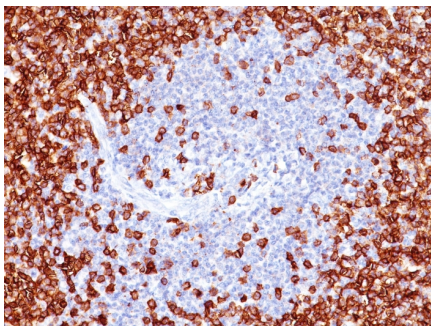
Product Images for CD45RO (T-Cell Marker) Antibody



SDS-PAGE Analysis CD45RO Mouse Monoclonal Antibody (T200/797). Confirmation of Purity and Integrity of Antibody.



Flow Cytometric Analysis of PFA-fixed Jurkat cells using CD45RO Mouse Monoclonal Antibody (T200/797) followed by Goat anti-Mouse- IgG-CF488 (Blue); Isotype Control (Red).



Formalin-fixed, paraffin-embedded human Tonsil stained with CD45RO Mouse Monoclonal Antibody (T200/797).

Specificity & Comments

Recognizes a 180-185kDa protein, identified as isoform of leukocyte common antigen (CD45RO). This antibody reacts with mature activated T-cells, most thymocytes, and a sub-population of resting T-cells within both CD4 and CD8 subsets. It shows no reactivity with normal B or natural killer cells, but reacts with granulocytes and monocytes. Reportedly, it is useful to identify T-cell lymphomas and leukemias. It rarely stains NK cells or B-cell lymphomas.

Research Areas

Autophagy, Cancer, Developmental Biology, Immuno Oncology, Immunology, B Cell Markers, Dendritic Cell Marker, Hematopoietic Stem Cells, Mesenchymal Stem Cell Differentiation

Known Applications & Suggested Dilutions

Flow Cytometry (1-2ug/million cells) | Immunofluorescence (1-2ug/ml) | Immunohistochemistry (Formalin-fixed) (0.25-0.5ug/ml for 30 minutes at RT)(Staining of formalin-fixed tissues requires heating tissue sections in 10mM Tris with 1mM EDTA, pH 9.0, for 45 min at 95°C followed by cooling at RT for 20 minutes) | Optimal dilution for a specific application should be determined.

Limitations and Warranty

This antibody is available for research use only and is not approved for use in diagnosis.

There are no warranties, expressed or implied, which extend beyond this description. Company is not liable for any personal injury or economic loss resulting from this product.

Supplied As

200ug/ml of Ab Purified from Bioreactor Concentrate by Protein A/G. Prepared in 10mM PBS with 0.05% BSA & 0.05% azide. Also available WITHOUT BSA & azide at 1.0mg/ml.

Storage and Stability

Antibody with azide - store at 2 to 8°C. Antibody without azide - store at -20 to -80°C. Antibody is stable for 24 months. Non-hazardous. No MSDS required.