

CD45RO (T-Cell Marker) Antibody

Mouse Monoclonal Antibody [Clone SPM125]

Catalog No	Format	Size
5788-MSM1X-P0	Purified Ab with BSA and Azide at 200ug/ml	20 ug
5788-MSM1X-P1	Purified Ab with BSA and Azide at 200ug/ml	100 ug
5788-MSM1X-P1ABX	Purified Ab WITHOUT BSA and Azide at 1.0mg/ml	100 ug

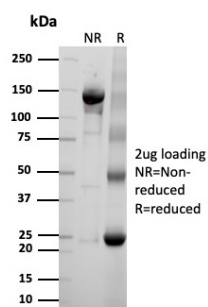
Applications	Tested Dillution	Note
Flow Cytometry (Flow)	1-2ug/million cells	
Immunofluorescence (IF)	1-3ug/ml	
Immunohistochemistry (IHC)	1-2ug/ml	30 min at RT. Staining of formalin-fixed tissues requires heating tissue sections in 10mM Tris with 1mM EDTA, pH 9.0, for 45 min at 95°C followed by cooling at RT for 20 minutes
Western Blot (WB)	2-4ug/ml	

Product Details

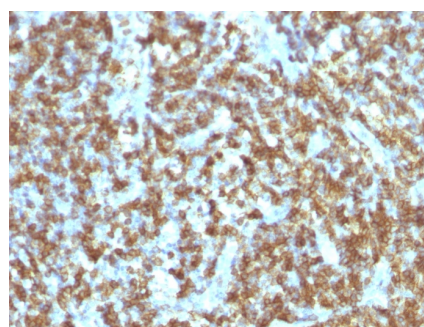
Clone	SPM125
Gene Name	PTPRC
Immunogen	Cultured human T-cells from an IL-2-dependent T-cell line (CA1)
Host	Mouse
Clonality	Monoclonal
Isotype / Light Chain	IgG2a / Kappa
Mol. Weight of Antigen	180-185kDa
Cellular Localization	Cell membrane, Membrane raft
Species Reactivity	Chimpanzee, Common Marmoset, Human
Positive Control	CCRF-CEM, Jurkat or MOLT-4 cells. Paracortex in a tonsil or a reactive lymph node.

*Optimal dilution for a specific application should be determined.

Product Images for CD45RO (T-Cell Marker) Antibody



SDS-PAGE Analysis of Purified Receptor-type tyrosine-protein phosphatase C Mouse Monoclonal Antibody (SPM125). Confirmation of Purity and Integrity of Antibody.



Formalin-fixed, paraffin-embedded human Lymphoma stained with CD45RO Monoclonal Antibody (SPM125).

Specificity & Comments

Recognizes a 180-185kDa protein, identified as isoform of leukocyte common antigen (CD45RO). The epitope recognized by this antibody is sensitive to neuraminidase digestion. This antibody reacts with mature activated T-cells, most thymocytes, and a sub-population of resting T-cells within both CD4 and CD8 subsets. It shows no reactivity with normal B or natural killer cells, but reacts with granulocytes and monocytes. Reportedly, it is useful to identify T-cell lymphomas and leukemias. It rarely stains NK cells or B-cell lymphomas.

Limitations and Warranty

This antibody is available for research use only and is not approved for use in diagnosis. There are no warranties, expressed or implied, which extend beyond this description. Company is not liable for any personal injury or economic loss resulting from this product.

Supplied As

200ug/ml of Ab Purified from Bioreactor Concentrate by Protein A/G. Prepared in 10mM PBS with 0.05% BSA & 0.05% azide. Also available WITHOUT BSA & azide at 1.0mg/ml.

Storage and Stability

Antibody with azide - store at 2 to 8°C. Antibody without azide - store at -20 to -80°C. Antibody is stable for 24 months. Non-hazardous. No MSDS required.

Research Areas

Autophagy, B Cell Markers, Cancer, Dendritic Cell Marker, Developmental Biology, Hematopoietic Stem Cells, Immuno Oncology, Immunology, Mesenchymal Stem Cell Differentiation
