

## CD45RB (B-Cell Marker) Antibody

Mouse Monoclonal Antibody [Clone PTPRC/1132]

Catalog No	Format	Size
5788-MSM16-P0	Purified Ab with BSA and Azide at 200ug/ml	20 ug
5788-MSM16-P1	Purified Ab with BSA and Azide at 200ug/ml	100 ug
5788-MSM16-P1ABX	Purified Ab WITHOUT BSA and Azide at 1.0mg/ml	100 ug

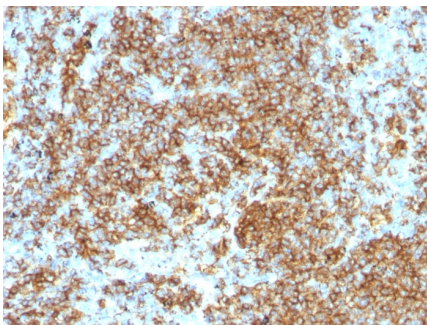
Applications	Tested Dillution	Note
Flow Cytometry (Flow)	1-2ug/million cells	
Immunofluorescence (IF)	1-3ug/ml	
Immunohistochemistry (IHC)	1-2ug/ml	30 min at RT. Staining of formalin-fixed tissues requires heating tissue sections in 10mM Tris with 1mM EDTA, pH 9.0, for 45 min at 95°C followed by cooling at RT for 20 minutes
Western Blot (WB)	2-4ug/ml	

### Product Details

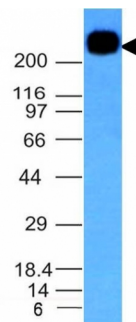
<b>Clone</b>	PTPRC/1132
<b>Gene Name</b>	PTPRC
<b>Immunogen</b>	Human B-lymphocytes
<b>Host</b>	Mouse
<b>Clonality</b>	Monoclonal
<b>Isotype / Light Chain</b>	IgG1 / Kappa
<b>Mol. Weight of Antigen</b>	180-220kDa
<b>Cellular Localization</b>	Cell membrane, Membrane raft
<b>Species Reactivity</b>	Human
<b>Positive Control</b>	Ramos, U-698 or GA-10 cells. Spleen and Tonsil.

\*Optimal dilution for a specific application should be determined.

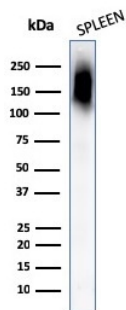
### Product Images for CD45RB (B-Cell Marker) Antibody



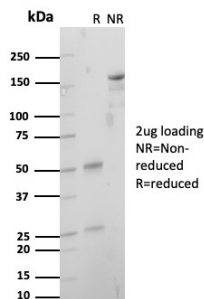
Formalin-fixed, paraffin-embedded human Lymphoma stained with CD45RB Monoclonal Antibody (PTPRC/1132).



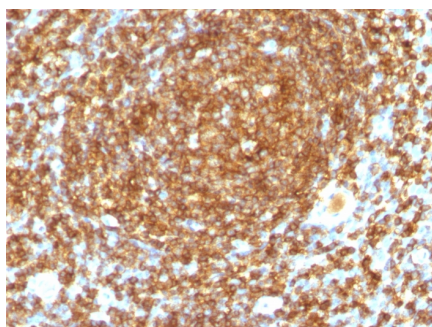
Western Blot Analysis of Daudi cell lysate using CD45RB Monoclonal Antibody (PTPRC/1132).



Western Blot Analysis of human Spleen tissue lysates using CD45RB Monoclonal Antibody (PTPRC/1132).



SDS-PAGE Analysis of Purified Receptor-type tyrosine-protein phosphatase C Mouse Monoclonal Antibody (PTPRC/1132). Confirmation of Purity and Integrity of Antibody.



Formalin-fixed, paraffin-embedded human Tonsil stained with CD45RB Monoclonal Antibody (PTPRC/1132).

### Specificity & Comments

CD45R, also designated CD45 and PTPRC, is identified as a transmembrane glycoprotein, broadly expressed among hematopoietic cells. Multiple isoforms of CD45R are distributed throughout the immune system. These isoforms arise because of alternative splicing of exons 4, 5, and 6. The corresponding protein domains are characterized by the binding of monoclonal antibodies specific for CD45RA (exon 4), CD45RB (exon 5), CD45RC (exon 6) and CD45RO (exons 4 to 6 spliced out). The variation in these isoforms is localized to the extracellular domain of CD45R, while the intracellular domain is conserved. CD45RB is expressed on mature B-lymphocytes and the majority of lymphomas and leukemias of B-cell origin.

### Limitations and Warranty

This antibody is available for research use only and is not approved for use in diagnosis. There are no warranties, expressed or implied, which extend beyond this description. Company is not liable for any personal injury or economic loss resulting from this product.

### Supplied As

200ug/ml of Ab Purified from Bioreactor Concentrate by Protein A/G. Prepared in 10mM PBS with 0.05% BSA & 0.05% azide. Also available WITHOUT BSA & azide at 1.0mg/ml.

### Storage and Stability

Antibody with azide - store at 2 to 8°C. Antibody without azide - store at -20 to -80°C. Antibody is stable for 24 months. Non-hazardous. No MSDS required.

### Research Areas

Autophagy, B Cell Markers, Cancer, Dendritic Cell Marker, Developmental Biology, Hematopoietic Stem Cells, Immuno Oncology, Immunology, Mesenchymal Stem Cell Differentiation