

## CD45RO (T-Cell Marker) Antibody

Mouse Monoclonal Antibody [Clone 190-2F2.5]

Catalog No	Format	Size
5788-MSM12-P0	Purified Ab with BSA and Azide at 200ug/ml	20 ug
5788-MSM12-P1	Purified Ab with BSA and Azide at 200ug/ml	100 ug
5788-MSM12-P1ABX	Purified Ab WITHOUT BSA and Azide at 1.0mg/ml	100 ug

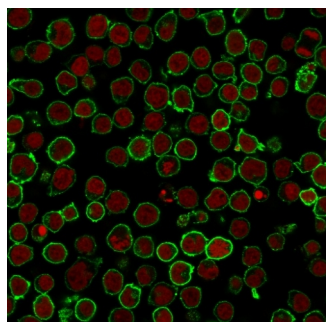
Applications	Tested Dillution	Note
Flow Cytometry (Flow)	1-2ug/million cells	
Immunofluorescence (IF)	1-3ug/ml	

### Product Details

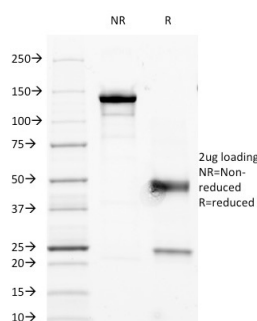
Clone	190-2F2.5
Gene Name	PTPRC
Immunogen	Lentillectin Purified glyco proteins obtained from HuPBL and from a CLL (B cell).
Host	Mouse
Clonality	Monoclonal
Isotype / Light Chain	IgG2a / Kappa
Mol. Weight of Antigen	180-185kDa
Cellular Localization	Cell membrane, Membrane raft
Species Reactivity	Human
Positive Control	CCRF-CEM, Jurkat or MOLT-4 cells. Paracortex in a tonsil or a reactive lymph node.

*\*Optimal dilution for a specific application should be determined.*

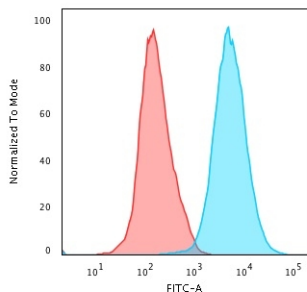
### Product Images for CD45RO (T-Cell Marker) Antibody



Immunofluorescence Analysis of PFA-fixed Jurkat cells labeling CD45 with CD45 Mouse Monoclonal Antibody (190-2F2.5) followed by Goat anti-Mouse IgG-CF488 (Green). The nuclear counterstain is Redot.



SDS-PAGE Analysis of Purified CD45 Mouse Monoclonal Antibody (1902F2.5). Confirmation of Integrity and Purity of Antibody.



Flow Cytometric Analysis of PFA-fixed Jurkat cells using CD45 Mouse Monoclonal Antibody (190-2F2.5) followed by Goat anti- Mouse- IgG-CF488 (Blue); Isotype Control (Red).

### Specificity & Comments

Recognizes a 180-185kDa protein, identified as isoform of leukocyte common antigen (CD45RO). This antibody reacts with mature activated T-cells, most thymocytes, and a sub-population of resting T-cells within both CD4 and CD8 subsets. It shows no reactivity with normal B or natural killer cells, but reacts with granulocytes and monocytes. Reportedly, it is useful to identify T-cell lymphomas and leukemias. It rarely stains NK cells or B-cell lymphomas.

### Supplied As

200ug/ml of Ab Purified from Bioreactor Concentrate by Protein A/G. Prepared in 10mM PBS with 0.05% BSA & 0.05% azide. Also available WITHOUT BSA & azide at 1.0mg/ml.

### Storage and Stability

Antibody with azide - store at 2 to 8°C. Antibody without azide - store at -20 to -80°C. Antibody is stable for 24 months. Non-hazardous. No MSDS required.

### Research Areas

Autophagy, Cancer, Developmental Biology, Immuno Oncology, Immunology, B Cell Markers, Dendritic Cell Marker, Hematopoietic Stem Cells, Mesenchymal Stem Cell Differentiation

### Limitations and Warranty

This antibody is available for research use only and is not approved for use in diagnosis. There are no warranties, expressed or implied, which extend beyond this description. Company is not liable for any personal injury or economic loss resulting from this product.