

## Recombinant Parathyroid Hormone (PTH) (N-Terminal) Antibody

Rabbit Monoclonal Antibody [Clone PTH/2295R]

Catalog No	Format	Size
5741-RBM10-P0	Purified Ab with BSA and Azide at 200ug/ml	20 ug
5741-RBM10-P1	Purified Ab with BSA and Azide at 200ug/ml	100 ug
5741-RBM10-P1ABX	Purified Ab WITHOUT BSA and Azide at 1.0mg/ml	100 ug

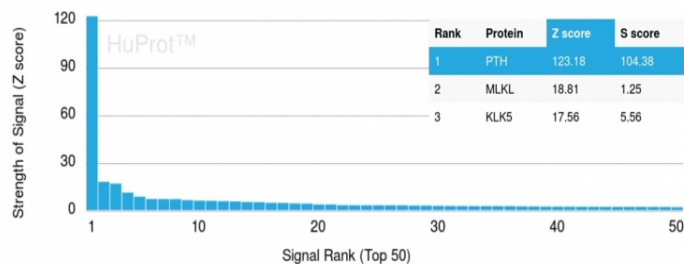
Applications	Tested Dillution	Note
Immunohistochemistry (IHC)	1-2ug/ml	30 min at RT. Staining of formalin-fixed tissues requires heating tissue sections in 10mM Tris with 1mM EDTA, pH 9.0, for 45 min at 95°C followed by cooling at RT for 20 minutes

### Product Details

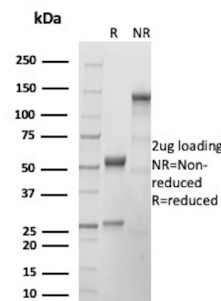
<b>Clone</b>	PTH/2295R
<b>Gene Name</b>	PTH
<b>Immunogen</b>	Recombinant fragment around aa 32-115 of human mature-PTH-polypeptide (exact sequence is proprietary)
<b>Host</b>	Rabbit
<b>Clonality</b>	Monoclonal
<b>Isotype / Light Chain</b>	IgG / Kappa
<b>Mol. Weight of Antigen</b>	9kDa
<b>Cellular Localization</b>	Secreted
<b>Species Reactivity</b>	Human
<b>Positive Control</b>	Human parathyroid gland carcinoma.

\*Optimal dilution for a specific application should be determined.

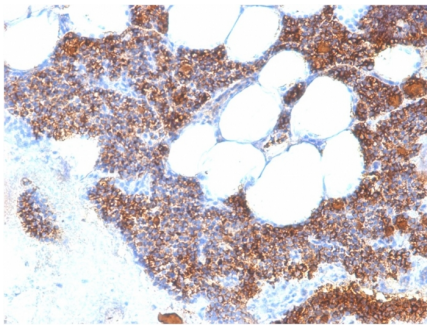
### Product Images for Recombinant Parathyroid Hormone (PTH) (N-Terminal) Antibody



Analysis of Protein Array containing more than 19,000 full-length human proteins using PTH-Monospecific Recombinant Rabbit Monoclonal Antibody (PTH/2295R) Z- and S-Score: The Z-score represents the strength of a signal that a monoclonal antibody (Monoclonal Antibody) (in combination with a fluorescently-tagged anti-IgG secondary antibody) produces when binding to a particular protein on the HuProt™ array. Z-scores are described in units of standard deviations (SD's) above the mean value of all signals generated on that array. If targets on HuProt™ are arranged in descending order of the Z-score, the S-score is the difference (also in units of SD's) between the Z-score. S-score therefore represents the relative target specificity of a Monoclonal Antibody to its intended target. A Monoclonal Antibody is considered to be specific to its intended target, if the Monoclonal Antibody has an S-score of at least 2.5. For example, if a Monoclonal Antibody binds to protein X with a Z-score of 43 and to protein Y with a Z-score of 14, then the S-score for the binding of that Monoclonal Antibody to protein X is equal to 29.



SDS-PAGE Analysis of Purified Parathyroid hormone Recombinant Rabbit Monoclonal Antibody (PTH/2295R). Confirmation of Purity and Integrity of Antibody.



Formalin-fixed, paraffin-embedded human Parathyroid Gland stained with PTH-Monospecific Recombinant Rabbit Monoclonal Antibody (PTH/2295R).

---

### Specificity & Comments

Epitope of this MAb maps in between aa 1-34. PTH is a hormone produced by the parathyroid gland that regulates the concentration of calcium and phosphorus in extracellular fluid. This hormone elevates blood  $Ca^{2+}$  levels by dissolving the salts in bone and preventing their renal excretion. It is produced in the parathyroid gland as an 84 amino acid single chain polypeptide. It can also be secreted as N-terminal truncated fragments or C-terminal fragments after intracellular degradation, as in case of hypercalcemia. Defects in this gene are a cause of familial isolated hypoparathyroidism (FIH); also called autosomal dominant hypoparathyroidism or autosomal dominant hypocalcemia. FIH is characterized by hypocalcemia and hyperphosphatemia due to inadequate secretion of parathyroid hormone. Symptoms are seizures, tetany and cramps. FIH exist both as autosomal dominant and recessive forms of hypoparathyroidism.

---

### Limitations and Warranty

This antibody is available for research use only and is not approved for use in diagnosis. There are no warranties, expressed or implied, which extend beyond this description. Company is not liable for any personal injury or economic loss resulting from this product.

---

### Supplied As

200ug/ml of Ab Purified from Bioreactor Concentrate by Protein A/G. Prepared in 10mM PBS with 0.05% BSA & 0.05% azide. Also available WITHOUT BSA & azide at 1.0mg/ml.

---

### Storage and Stability

Antibody with azide - store at 2 to 8°C. Antibody without azide - store at -20 to -80°C. Antibody is stable for 24 months. Non-hazardous. No MSDS required.

---

### Research Areas

Cardiovascular, Mesenchymal Stem Cell Differentiation, Signal Transduction

---