

## Recombinant Prolactin Receptor (hPRL Receptor) Antibody

Mouse Monoclonal Antibody [Clone rPRLR/742]

| Catalog No      | Format  | Size   |
|-----------------|---|--------|
| 5618-MSM5-P0    | Purified Ab with BSA and Azide at 200ug/ml    | 20 ug  |
| 5618-MSM5-P1    | Purified Ab with BSA and Azide at 200ug/ml    | 100 ug |
| 5618-MSM5-P1ABX | Purified Ab WITHOUT BSA and Azide at 1.0mg/ml | 100 ug |

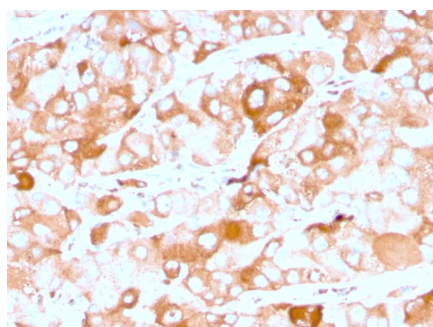
| Applications               | Tested Dillution | Note  |
|----------------------------|------------------|---|
| Immunohistochemistry (IHC) | 1-2ug/ml         | 30 min at RT. Staining of formalin-fixed tissues requires heating tissue sections in 10mM Tris with 1mM EDTA, pH 9.0, for 45 min at 95°C followed by cooling at RT for 20 minutes |
| Western Blot (WB)          | 2-4ug/ml         |   |

### Product Details

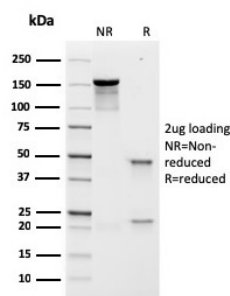
|                        |  |
|------------------------|--|
| Clone                  | rPRLR/742                                  |
| Gene Name              | PRLR                                       |
| Immunogen              | Recombinant full-length human PRLR protein |
| Host                   | Mouse                                      |
| Clonality              | Monoclonal                                 |
| Isotype / Light Chain  | IgG1 / Kappa                               |
| Mol. Weight of Antigen | 70kDa                                      |
| Cellular Localization  | Membrane, Secreted                         |
| Species Reactivity     | Human                                      |
| Positive Control       | Testicular Carcinoma. Kidney.              |

*\*Optimal dilution for a specific application should be determined.*

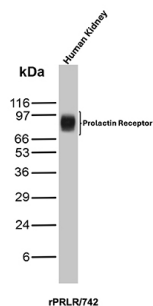
### Product Images for Recombinant Prolactin Receptor (hPRL Receptor) Antibody



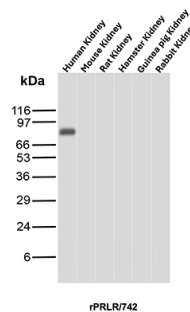
Formalin-fixed, paraffin-embedded human breast carcinoma stained with Prolactin Receptor Recombinant Mouse Monoclonal Antibody (rPRLR742).



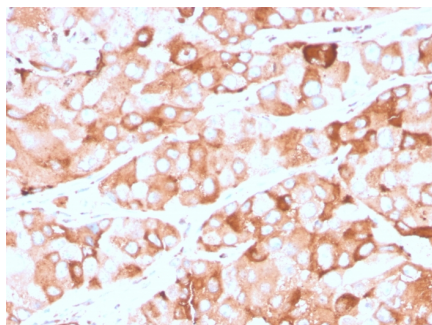
SDS-PAGE Analysis of Purified Prolactin Receptor Recombinant Mouse Monoclonal (rPRLR742). Confirmation of Integrity and Purity of Antibody.



Western blot analysis of Human Kidney tissue lysate using Prolactin Receptor Mouse Recombinant Monoclonal Antibody (rPRLR/742).



Western blot analysis of Kidney tissue lysates of different species using Prolactin Receptor Mouse Recombinant Monoclonal Antibody (rPRLR/742).



Formalin-fixed, paraffin-embedded human breast carcinoma stained with Prolactin Receptor Recombinant Mouse Monoclonal Antibody (rPRLR742).

### Specificity & Comments

It recognizes a protein of 70kDa, identified as prolactin receptor. Prolactin is a pituitary hormone involved in the stimulation of milk production, salt and water regulation, growth, development and reproduction. The initial step in its action is the binding to a specific membrane receptor (prolactin receptor), which belongs to the superfamily of class 1 cytokine receptors. The function of the prolactin receptor is mediated, at least in part, by two families of signaling molecules: Janus kinases and signal transducers and activators of transcription.

### Supplied As

200ug/ml of Ab produced in HEK293 cell mammalian-based expression system. Prepared in 10mM PBS with 0.05% BSA & 0.05% azide. Also available WITHOUT BSA & azide at 1.0mg/ml.

### Storage and Stability

Antibody with azide - store at 2 to 8°C. Antibody is stable for 24 months. ,Non-hazardous. No MSDS required.

### Research Areas

Cardiovascular, Immunology, Cytokine Signaling

### Limitations and Warranty

This antibody is available for research use only and is not approved for use in diagnosis. There are no warranties, expressed or implied, which extend beyond this description. Company is not liable for any personal injury or economic loss resulting from this product.