

## Prolactin (Pituitary Tumor Marker) Antibody

Mouse Monoclonal Antibody [Clone PRL/2910]

Catalog No	Format	Size
5617-MSM5-P0	Purified Ab with BSA and Azide at 200ug/ml	20 ug
5617-MSM5-P1	Purified Ab with BSA and Azide at 200ug/ml	100 ug
5617-MSM5-P1ABX	Purified Ab WITHOUT BSA and Azide at 1.0mg/ml	100 ug

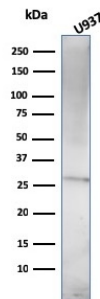
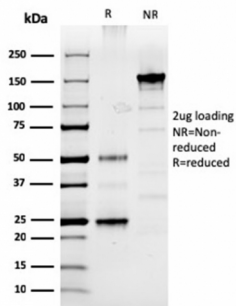
Applications	Tested Dillution	Note
Immunohistochemistry (IHC)	1-2ug/ml	30 min at RT. Staining of formalin-fixed tissues requires heating tissue sections in 10mM Tris with 1mM EDTA, pH 9.0, for 45 min at 95°C followed by cooling at RT for 20 minutes

### Product Details

Clone	PRL/2910
Gene Name	PRL
Immunogen	Recombinant fragment of humanProlactin (PRL) protein (around aa 63-201) (exact sequence is proprietary)
Host	Mouse
Clonality	Monoclonal
Isotype / Light Chain	IgG2b / Kappa
Mol. Weight of Antigen	27kDa
Cellular Localization	Secreted
Species Reactivity	Human
Positive Control	Pituitary tissue. Pituitary lysate.

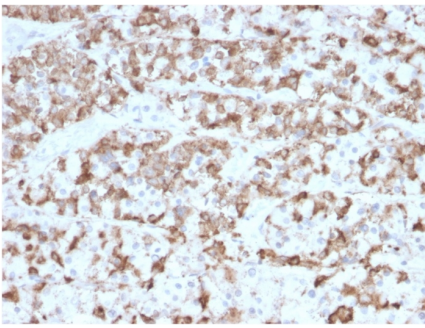
\*Optimal dilution for a specific application should be determined.

### Product Images for Prolactin (Pituitary Tumor Marker) Antibody



SDS-PAGE Analysis of Purified Prolactin Mouse Monoclonal Antibody (PRL/2910). Confirmation of Purity and Integrity of Antibody.

Western Blot Analysis of U937 cell lysate using Prolactin Mouse Monoclonal Antibody (PRL/2910).



Formalin-fixed, paraffin-embedded human Pituitary stained with Prolactin Mouse Monoclonal Antibody (PRL/2910).

---

### Specificity & Comments

Prolactin is a growth factor that is secreted by the anterior pituitary. It is necessary for the proliferation and differentiation of the mammary glands. Prolactin is useful in the classification of pituitary tumors and study of pituitary disease. It also plays a role in the development of mammary cancer, functioning dually as a mitogen and a differentiating agent.

---

### Supplied As

200ug/ml of Ab Purified from Bioreactor Concentrate by Protein A/G. Prepared in 10mM PBS with 0.05% BSA & 0.05% azide. Also available WITHOUT BSA & azide at 1.0mg/ml.

---

### Storage and Stability

Antibody with azide - store at 2 to 8°C. Antibody without azide - store at -20 to -80°C. Antibody is stable for 24 months. Non-hazardous. No MSDS required.

---

### Research Areas

Cytokine Signaling, Immunology

---

### Limitations and Warranty

This antibody is available for research use only and is not approved for use in diagnosis. There are no warranties, expressed or implied, which extend beyond this description. Company is not liable for any personal injury or economic loss resulting from this product.

---