

## Prolactin (Pituitary Tumor Marker) Antibody

Mouse Monoclonal Antibody [Clone PRL/2644]

| Catalog No      | Format  | Size   |
|-----------------|---|--------|
| 5617-MSM4-P0    | Purified Ab with BSA and Azide at 200ug/ml    | 20 ug  |
| 5617-MSM4-P1    | Purified Ab with BSA and Azide at 200ug/ml    | 100 ug |
| 5617-MSM4-P1ABX | Purified Ab WITHOUT BSA and Azide at 1.0mg/ml | 100 ug |

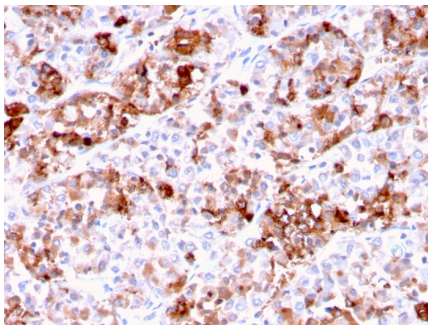
| Applications               | Tested Dillution | Note  |
|----------------------------|------------------|---|
| Immunohistochemistry (IHC) | 1-2ug/ml         | 30 min at RT. Staining of formalin-fixed tissues requires heating tissue sections in 10mM Tris with 1mM EDTA, pH 9.0, for 45 min at 95°C followed by cooling at RT for 20 minutes |

### Product Details

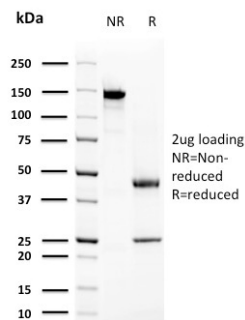
|                               |  |
|-------------------------------|--|
| <b>Clone</b>                  | PRL/2644   |
| <b>Gene Name</b>              | PRL  |
| <b>Immunogen</b>              | Recombinant fragment of human Prolactin (PRL) protein (around aa 63-201) (exact sequence is proprietary) |
| <b>Host</b>                   | Mouse  |
| <b>Clonality</b>              | Monoclonal   |
| <b>Isotype / Light Chain</b>  | IgG1 / Kappa   |
| <b>Mol. Weight of Antigen</b> | 27kDa  |
| <b>Cellular Localization</b>  | Secreted   |
| <b>Species Reactivity</b>     | Human  |
| <b>Positive Control</b>       | Pituitary.   |

\*Optimal dilution for a specific application should be determined.

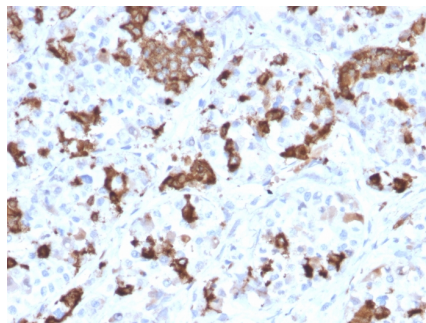
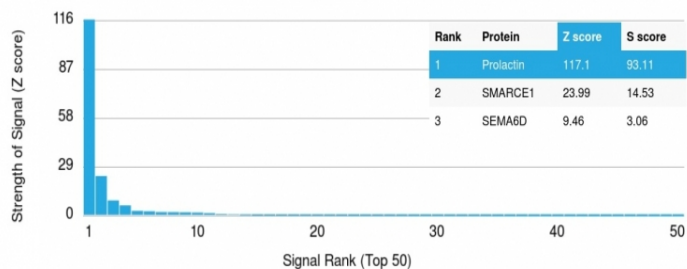
### Product Images for Prolactin (Pituitary Tumor Marker) Antibody



Formalin-fixed, paraffin-embedded human Pituitary stained with Prolactin Mouse Monoclonal Antibody (PRL/2644).



SDS-PAGE Analysis of Purified Prolactin Mouse Monoclonal Antibody (PRL/2644). Confirmation of Purity and Integrity of Antibody.



Formalin-fixed, paraffin-embedded human Pituitary stained with Prolactin Mouse Monoclonal Antibody (PRL/2644).

Analysis of Protein Array containing more than 19,000 full-length human proteins using Prolactin Mouse Monoclonal Antibody (PRL/2644). Z- and S- Score: The Z-score represents the strength of a signal that a monoclonal antibody (MAb) (in combination with a fluorescently-tagged anti-IgG secondary antibody) produces when binding to a particular protein on the HuProt™ array. Z-scores are described in units of standard deviations (SD's) above the mean value of all signals generated on that array. If targets on HuProt™ are arranged in descending order of the Z-score, the S-score is the difference (also in units of SD's) between the Z-score. S-score therefore represents the relative target specificity of a MAb to its intended target. A MAb is considered to be specific to its intended target, if the MAb has an S-score of at least 2.5. For example, if a MAb binds to protein X with a Z-score of 43 and to protein Y with a Z-score of 14, then the S-score for the binding of that MAb to protein X is equal to 29.

### Specificity & Comments

Prolactin is a growth factor that is secreted by the anterior pituitary. It is necessary for the proliferation and differentiation of the mammary glands. Prolactin is useful in the classification of pituitary tumors and study of pituitary disease. It also plays a role in the development of mammary cancer, functioning dually as a mitogen and a differentiating agent.

### Supplied As

200ug/ml of Ab Purified from Bioreactor Concentrate by Protein A/G. Prepared in 10mM PBS with 0.05% BSA & 0.05% azide. Also available WITHOUT BSA & azide at 1.0mg/ml.

### Storage and Stability

Antibody with azide - store at 2 to 8°C. Antibody without azide - store at -20 to -80°C. Antibody is stable for 24 months. Non-hazardous. No MSDS required.

### Research Areas

Cytokine Signaling, Immunology

### Limitations and Warranty

This antibody is available for research use only and is not approved for use in diagnosis. There are no warranties, expressed or implied, which extend beyond this description. Company is not liable for any personal injury or economic loss resulting from this product.